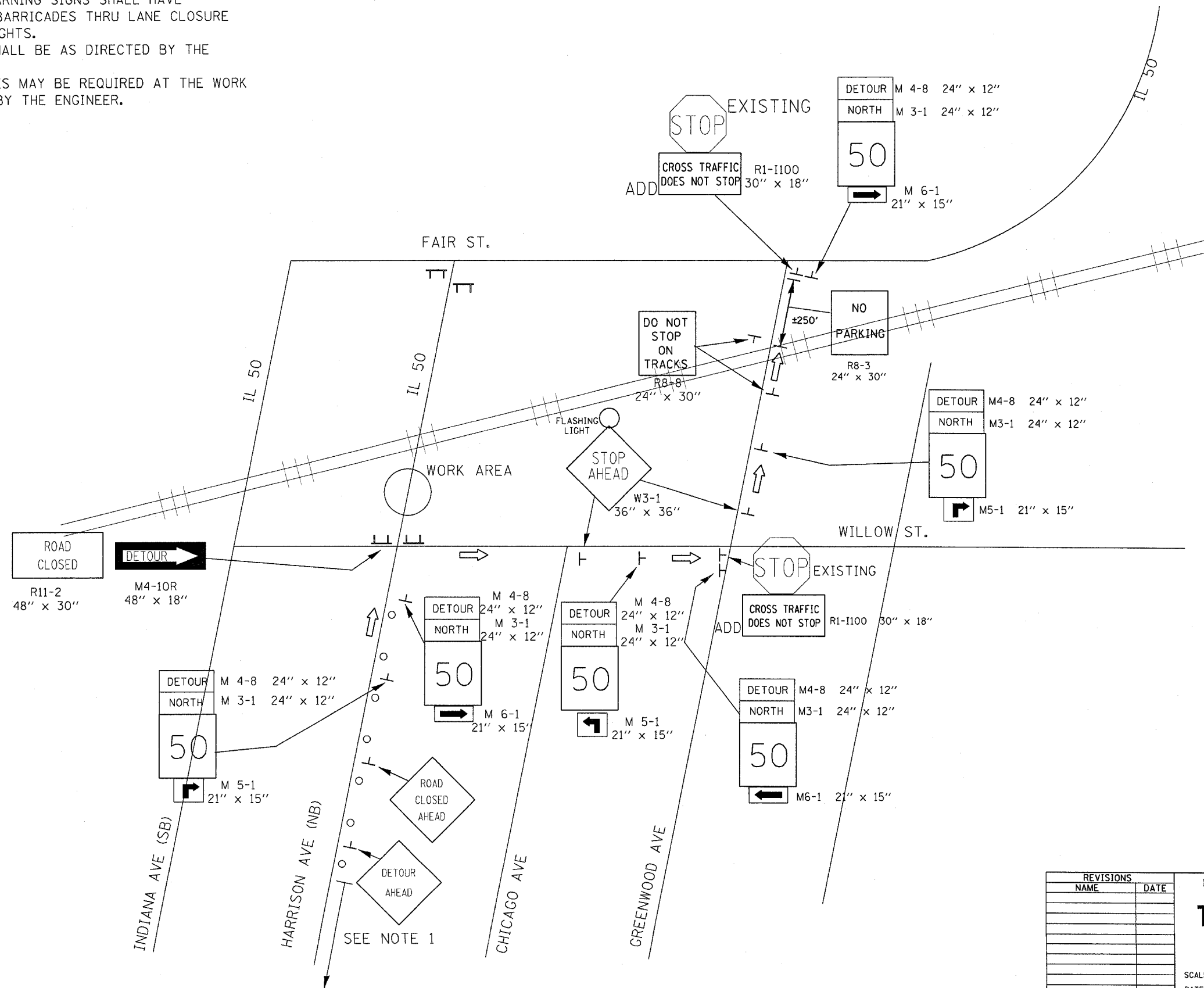


DETOUR NOTES

1. MOVE TRAFFIC INTO LEFT LANE WITH A RIGHT LANE CLOSURE USING HIGHWAY STANDARD 701601. THE W21-I110-48 SIGNS MAY BE OMITTED. ADVANCED WARNING SIGNS SHALL HAVE FLASHING LIGHTS. ALL DRUMS/BARRICADES THRU LANE CLOSURE SHALL HAVE STEADY BURNING LIGHTS.
2. SIGN LOCATION AND SPACING SHALL BE AS DIRECTED BY THE ENGINEER.
3. ADDITIONAL TYPE III BARRICADES MAY BE REQUIRED AT THE WORK AREA LOCATION. AS DIRECTED BY THE ENGINEER.

F.A.P. RTE.	SECTION	COUNTY	TOTAL SHEETS	SHEET NO.
840	(139Z-1)I	KANKAKEE	24	9
STA.	TO STA.			
FED. ROAD DIST. NO.	ILLINOIS FED. AID PROJECT			

CONTRACT# 66131



August 16, 2004
ep05899/sheets.dgn

REVISIONS	
NAME	DATE

ILLINOIS DEPARTMENT OF TRANSPORTATION

TRAFFIC DETOUR PLAN

SCALE: VERT. DATE
HORIZ. DATE

DRAWN BY
CHECKED BY