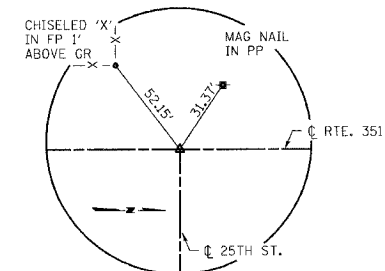
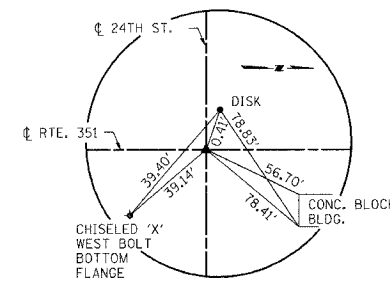
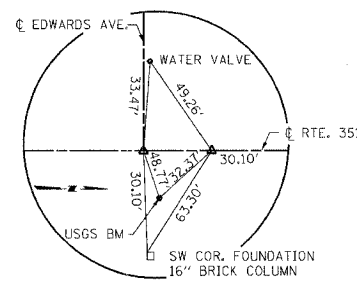
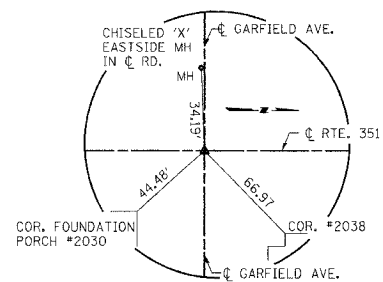
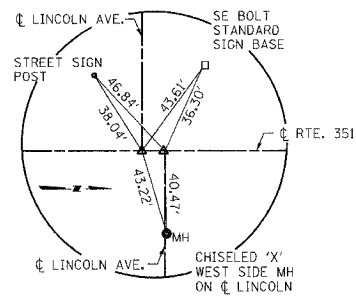


DESIGN		
INT.	DATE	REASON

F.A.I.D. RTE.	SECTION	COUNTY	TOTAL SHEETS	SHEET NO.
6108	...	LA SALLE	679	71
STA. _____ TO STA. _____				
FED. ROAD DIST. NO. ILLINOIS FED. AID PROJECT				
... (70X, 71X)RS-1, (71X-VBR)DM				
CONTRACT NO. 66225				



STATION EQUATION

P.O.T. STA. 186+34.99 (IL RTE. 351) =
 P.I. STA. 10+00.00 (LINCOLN AVENUE WEST)
 P.O.T. STA. 186+46.18 (IL RTE. 351) =
 P.I. STA. 10+00.00 (LINCOLN AVENUE EAST)

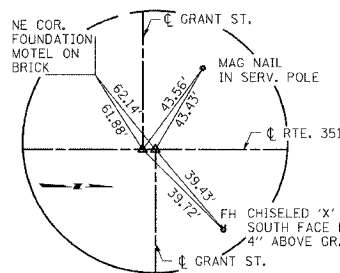
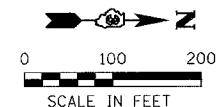
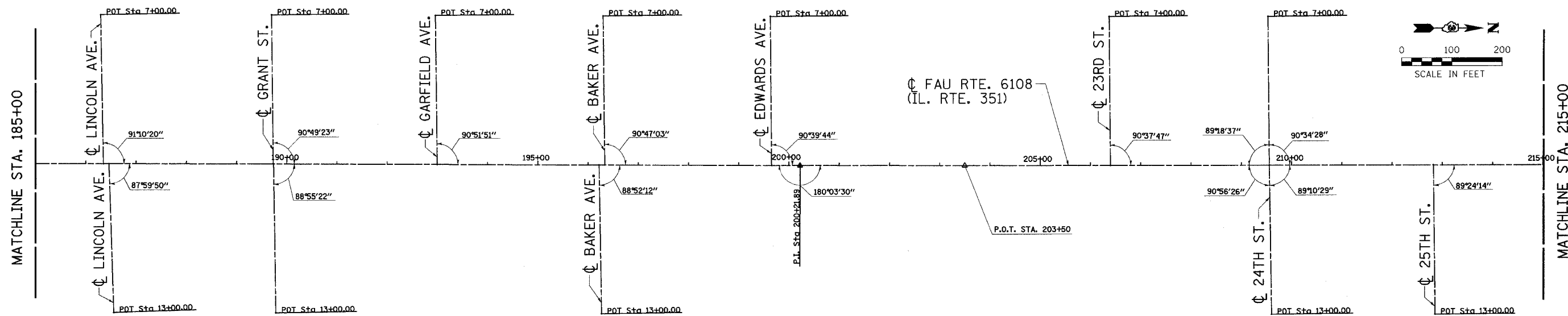
STATION EQUATION

P.O.T. STA. 192+99.61 (IL RTE. 351) =
 P.I. STA. 10+00.00 (GARFIELD AVENUE)
 P.O.T. STA. 199+65.36 (IL RTE. 351) =
 P.I. STA. 10+00.00 (EDWARDS AVENUE)
 P.O.T. STA. 200+21.89 (IL RTE. 351)

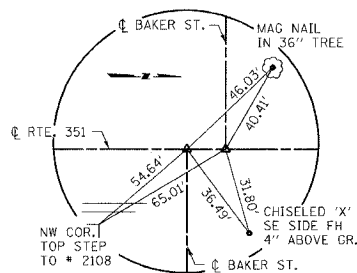
P.O.T. STA. 209+55.76 (IL RTE. 351) =
 P.I. STA. 10+00.00 (24TH ST.)

P.O.T. STA. 212+82.27 (IL RTE. 351) =
 P.I. STA. 10+00.00 (25TH ST.)

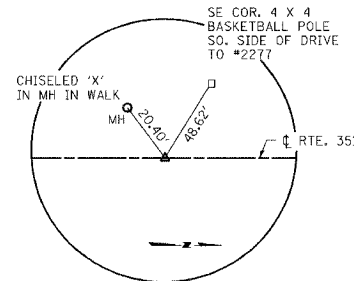
PLOTS & CHECKS		
INT.	DATE	REASON



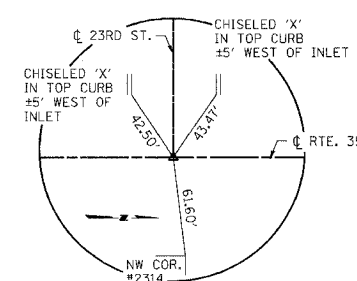
STATION EQUATION
 P.O.T. STA. 189+73.22 (IL RTE. 351) =
 P.I. STA. 10+00.00 (GRANT ST. WEST)
 P.O.T. STA. 189+73.64 (IL RTE. 351) =
 P.I. STA. 10+00.00 (GRANT ST. EAST)



STATION EQUATION
 P.O.T. STA. 196+21.85 (IL RTE. 351) =
 P.I. STA. 10+00.00 (BAKER ST. EAST)
 P.O.T. STA. 196+33.20 (IL RTE. 351) =
 P.I. STA. 10+00.00 (BAKER ST. WEST)



P.O.T. STA. 203+50.00



P.O.T. STA. 206+39.72 (IL RTE. 351) =
 P.I. STA. 10+00.00 (23RD ST.)

REVISIONS	
NAME	DATE

NOTE: ALL CENTERLINE CONTROL POINTS ARE MAG. NAILS UNLESS OTHERWISE NOTED.

ILLINOIS DEPARTMENT OF TRANSPORTATION
ALIGNMENT SCHEMATIC
 & TIES

FAU RTE. 6108 (IL RTE. 351)
 SEC. (70X, 71X)RS-1, (71X-VBR)DM
 LASALLE COUNTY

SCALE: VERT. _____
 HORIZ. _____
 DATE 11/16/00-PAM

DRAWN BY: MABUS
 DESIGNED BY: KUNTZMAN
 CHECKED BY: COLBROOK

GREENE & BRADFORD, INC.
 OF SPRINGFIELD
 REGISTERED ENGINEERS
 200 CALDWELL DRIVE
 SPRINGFIELD, ILLINOIS 62761
 (314) 625-3300 FAX (314) 625-3301

COMPUTER FILE NO.
 SCHEMATIC.D
 PROJECT 01194.B.S
 05/07/03-JLJ