

DESIGN		
INT.	DATE	REASON

PLAN		
NO.	DATE	BY

CHECKS		
INT.	DATE	REASON

PROFILE		
NO.	DATE	BY

CHECKS		
INT.	DATE	REASON

NOTE: HEAVY DASH INDICATES 2002 CONSTRUCTION PROJECT.

TBM #16: T230 US 65 MARKER (VERTICAL) IN NORTH EAST CORNER OF SCHOOL BUILDING STA. 163+00, 61' LT. ELEV. 607.40

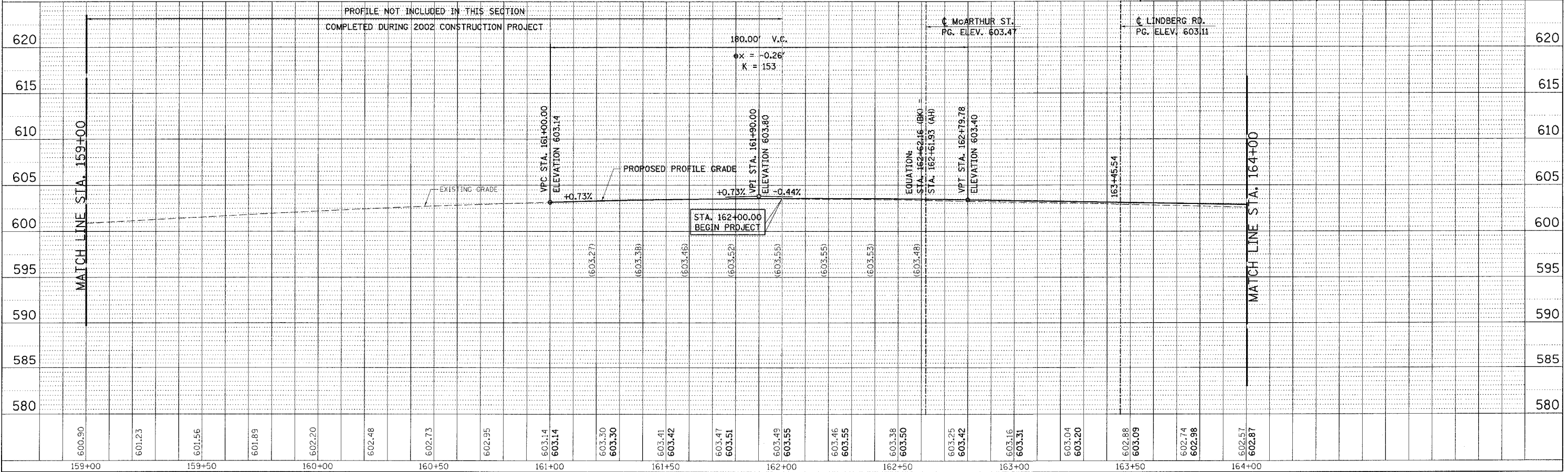
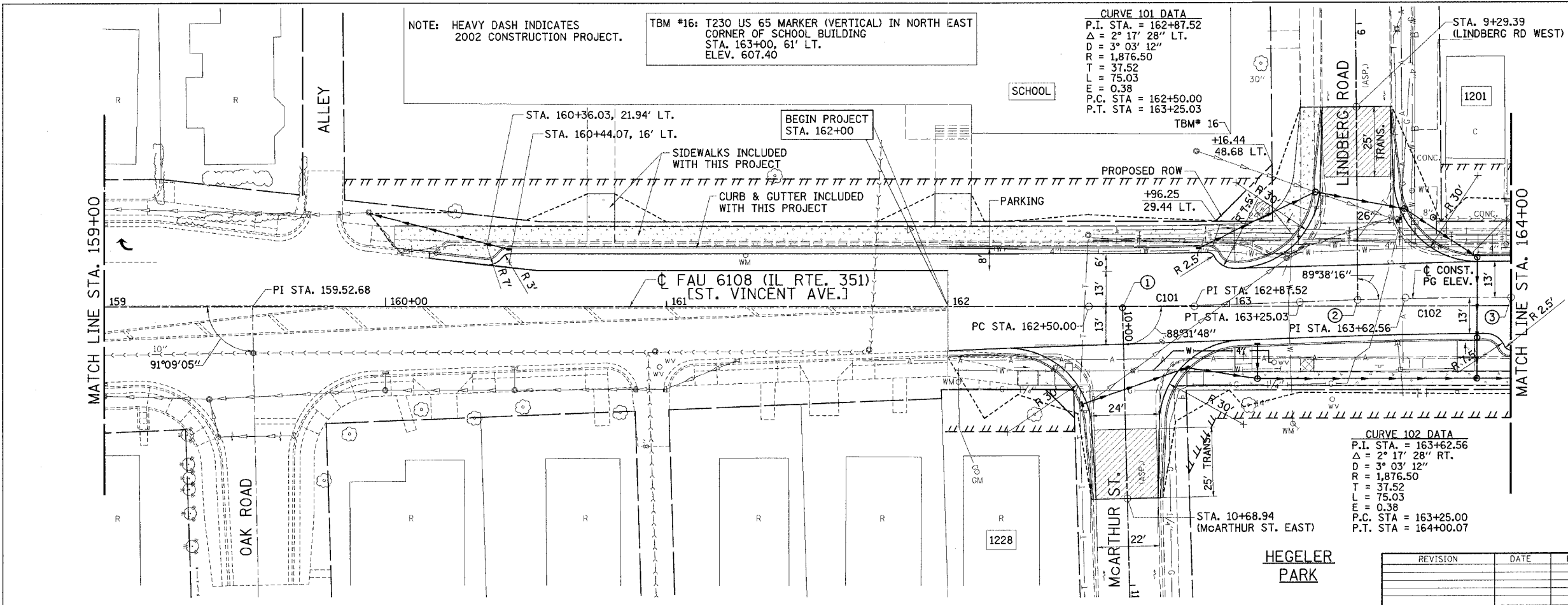
CURVE 101 DATA
 P.I. STA. = 162+87.52
 $\Delta = 2^\circ 17' 28''$ LT.
 $D = 3^\circ 03' 12''$
 $R = 1,876.50$
 $T = 37.52$
 $L = 75.03$
 $E = 0.38$
 P.C. STA. = 162+50.00
 P.T. STA. = 163+25.03

CURVE 102 DATA
 P.I. STA. = 163+62.56
 $\Delta = 2^\circ 17' 28''$ RT.
 $D = 3^\circ 03' 12''$
 $R = 1,876.50$
 $T = 37.52$
 $L = 75.03$
 $E = 0.38$
 P.C. STA. = 163+25.00
 P.T. STA. = 164+00.07

F.A.U. RTE.	SECTION	COUNTY	TOTAL SHEETS	SHEET NO.
6108	***	LA SALLE	679	92
STA. 159+00		TO STA. 164+00		
FED. ROAD DIST. NO.		ILLINOIS FED. AID PROJECT		
*** (70X,71X)RS-1, (71X-VBR)DM		CONTRACT NO. 66225		

0 20 40
SCALE IN FEET

- ① STA. EQUATION :
 STA. 162+62.16 (BK) (IL. RTE. 351) =
 STA. 162+61.93 (AH) (IL. RTE. 351) =
 STA. 10+00.00 (MCARTHUR ST. EAST)
- ② STA. 163+45.54 (IL. RTE. 351) =
 STA. 9+97.79 (LINDBERG RD WEST)
- ③ PT STA. 164+00.07



REVISION	DATE	BY

GREENE & BRADFORD, INC.
OF SPRINGFIELD

COMPUTER FILE NO. PLN351B-03
PROJECT: 01194_B.S
03/16/04-RPB