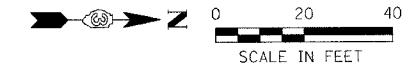


F.A.U. RTE.	SECTION	COUNTY	TOTAL SHEETS	SHEET NO.
6108	***	LA SALLE	679	108
STA. 237+00		TO STA. 242+00		
FED. ROAD DIST. NO.		ILLINOIS FED. AID PROJECT		
*** (70X, 71XRS-1, 71X-VBRDM)		CONTRACT NO. 66225		



① STA. 240+30.08 (IL RTE 351) = STA. 10+00 (GUNIA RD.)

② CORE #2
237+03.90, 8' LT.
10" PCC - GOOD
2 1/4" BIT. - GOOD

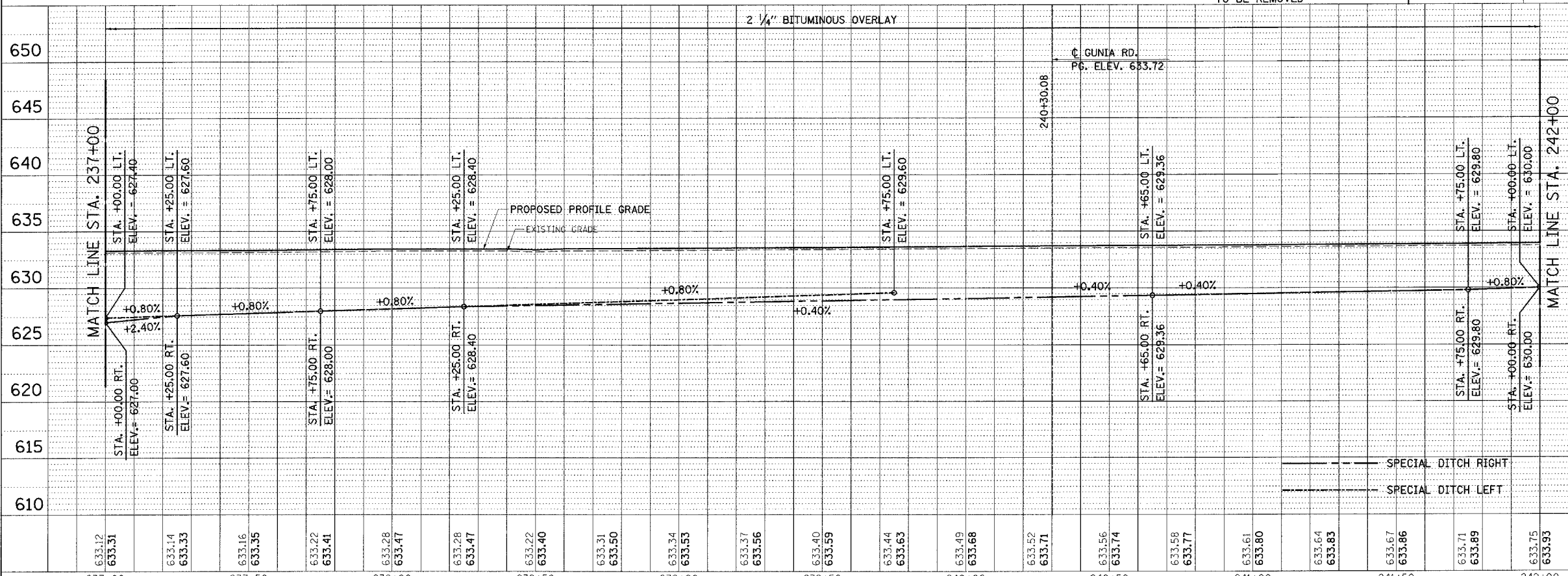
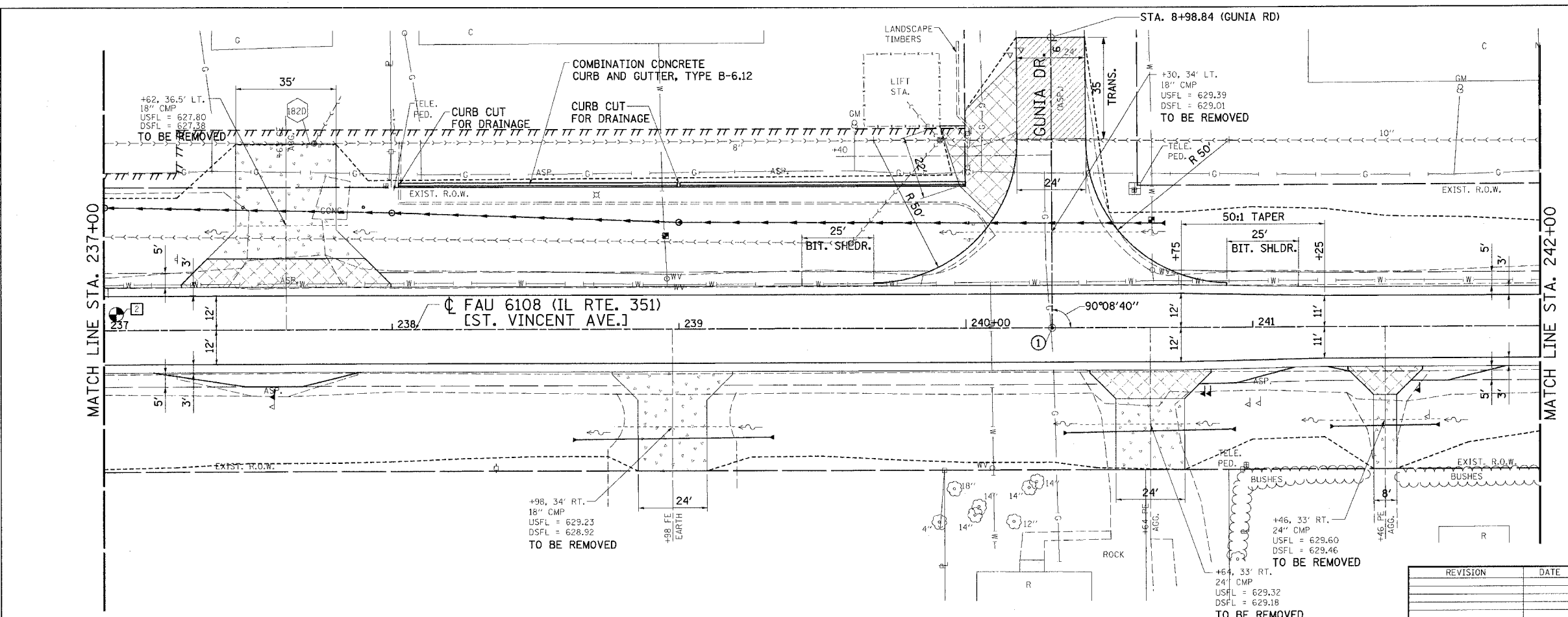
DESIGN		
INT.	DATE	REASON

CHECKS		
INT.	DATE	REASON

PLANS & CHECKS		
INT.	DATE	REASON

PROFILE		
INT.	DATE	REASON

CHECKS		
INT.	DATE	REASON



REVISION	DATE	BY

	GREENE & BRADFORD, INC. OF SPRINGFIELD	COMPUTER FILE NO. PLN351H-01
	PROJECT: 01194-B.S 04/01/04-RPB	