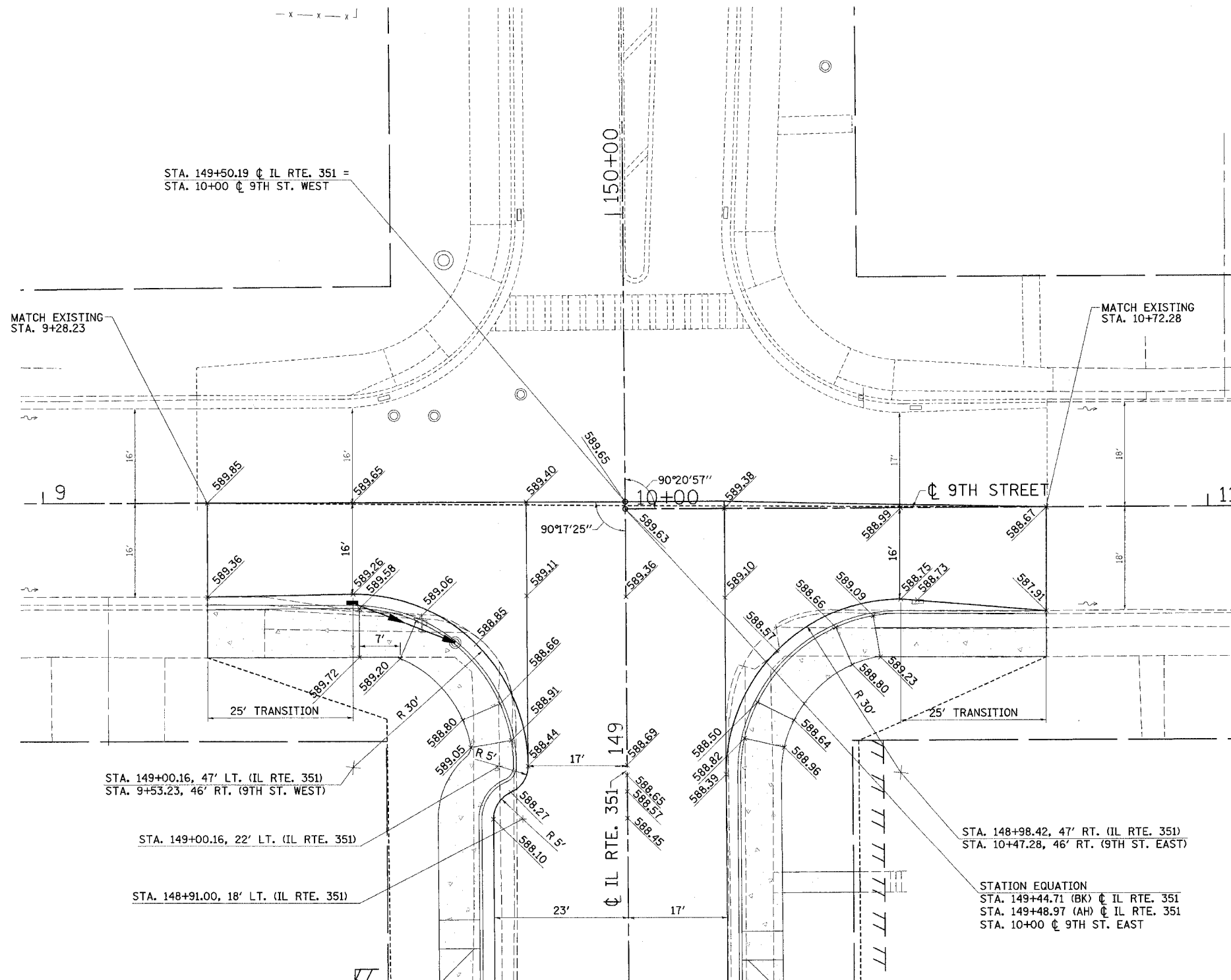
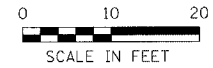


DESIGN		
INT.	DATE	REASON

PLOTS & CHECKS			
INT.	DATE	NO.	REASON

CHECKS		
INT.	DATE	REASON

F.A.U. RTE.	SECTION	COUNTY	TOTAL SHEETS	SHEET NO.
6108	***	LA SALLE	679	216
STA. TO STA.				
FED. ROAD DIST. NO. 3 ILLINOIS FED. AID PROJECT				
*** (70X,71X)RS-1, (71X-VBR)DM				
CONTRACT NO. 66225				



STA. 149+00.16, 47' LT. (IL RTE. 351)
 STA. 9+53.23, 46' RT. (9TH ST. WEST)

STA. 149+00.16, 22' LT. (IL RTE. 351)

STA. 148+91.00, 18' LT. (IL RTE. 351)

STA. 148+98.42, 47' RT. (IL RTE. 351)
 STA. 10+47.28, 46' RT. (9TH ST. EAST)

STATION EQUATION
 STA. 149+44.71 (BK) \oslash IL RTE. 351
 STA. 149+48.97 (AH) \oslash IL RTE. 351
 STA. 10+00 \oslash 9TH ST. EAST

• LENGTH OF HANDICAP RAMP SHALL BE 5' UNLESS NOTED OTHERWISE

REVISIONS	
NAME	DATE

ILLINOIS DEPARTMENT OF TRANSPORTATION

INTERSECTION DETAILS

F.A.U. 6108 (IL RTE. 351)
 LA SALLE COUNTY
 SEC. (70X,71X) RS-1, (71X-VBR)DM

SCALE: VERT. _____
 HORIZ. _____
 DATE _____

DRAWN BY: MABUS
 DESIGNED BY: KUNTZMAN
 CHECKED BY: COLBROOK

COMPUTER FILE NO.
 INT. 8-02
 PROJECT 01194.B.S
 03/31/04-RPB

GREENE & BRADFORD, INC.
 OF SPRINGFIELD
 CIVIL ENGINEERS
 1001 W. WASHINGTON ST.
 SPRINGFIELD, ILL. 62767
 (618) 244-1111 FAX (618) 244-1112
 WWW.GRENE-AND-BRADFORD.COM