

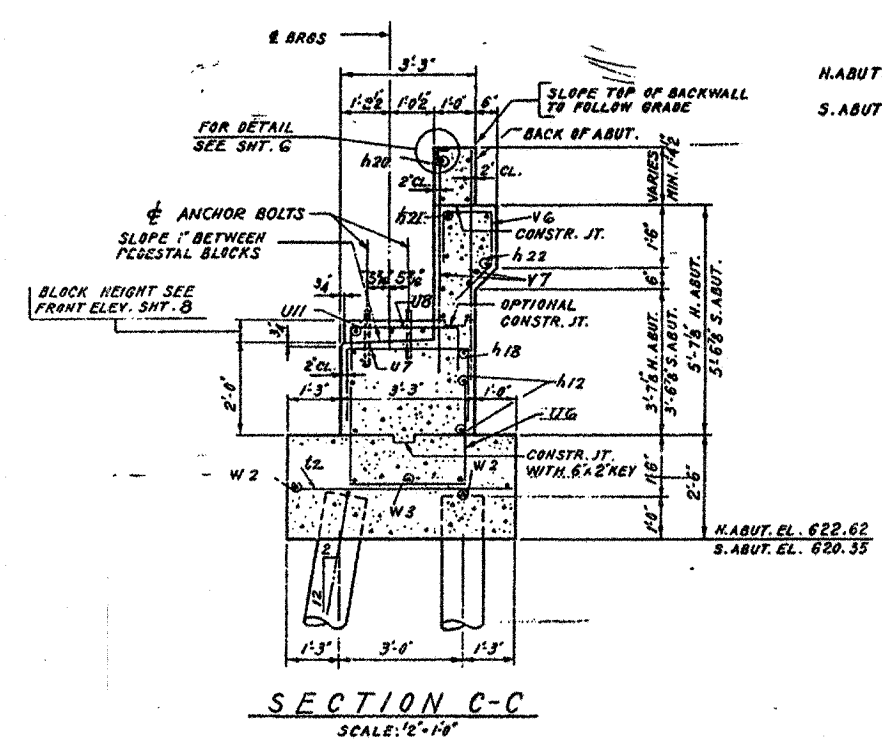
DESIGN		
INT.	DATE	REASON

PLOTS & CHECKS		
INT.	DATE	REASON

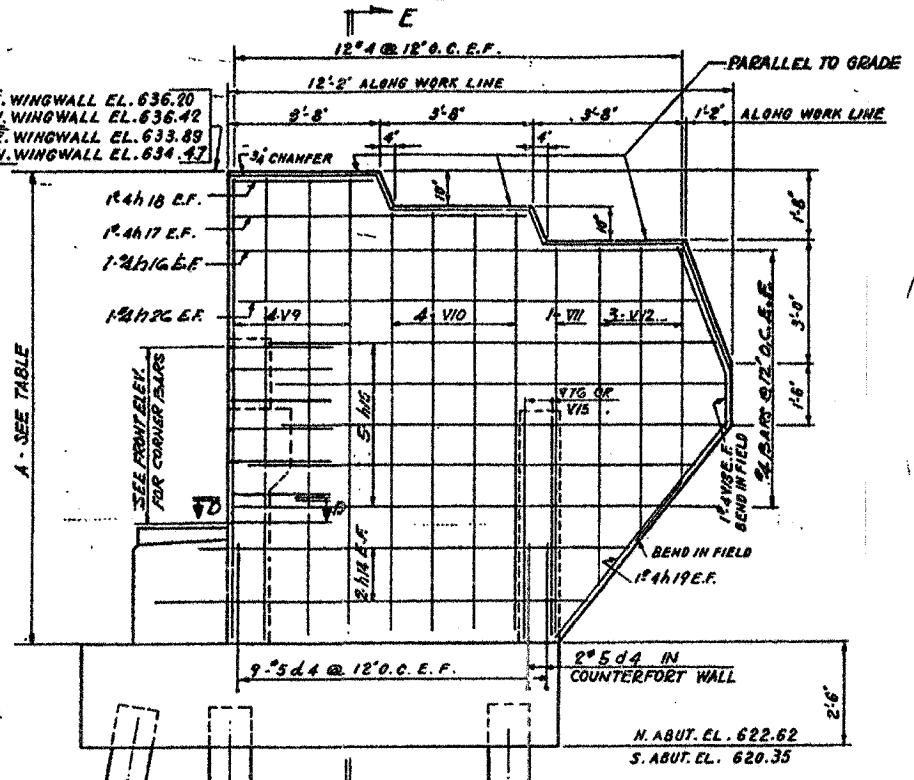
FILE NAME = \$FILES  
PLOT SCALE = \$PLOTSCALE  
PLOT DATE = \$DATE  
PLOT OPERATOR = \$OPERATOR  
PROFILE DRAWN BY = \$BY  
NOTE BOOK NO. = \$NOTEBOOK  
STRUCTURE IDENTIFICATION NO. = \$STRUCTUREID

CHECKS		
INT.	DATE	REASON

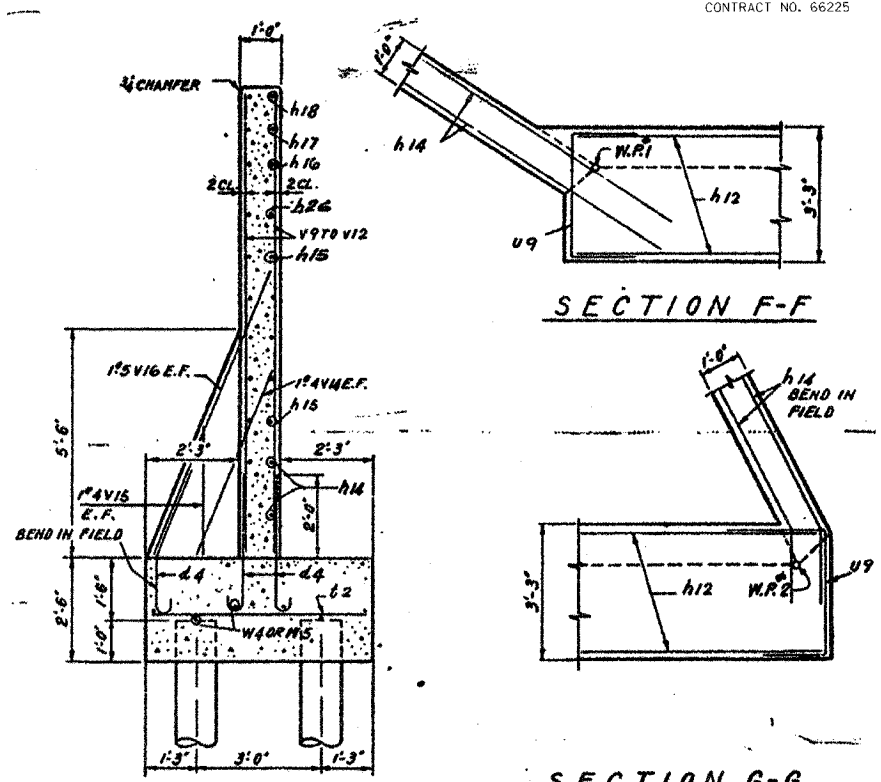
F.A.U. RTE. 6108	SECTION ****	COUNTY LASALLE	TOTAL SHEETS 679	SHEET NO. 260
STA. _____		TO STA. _____		
FED. ROAD DIST. NO. _____		ILLINOIS FED. AID PROJECT		
***** (70X, 71XRS-1, (71X-VBRIDM				
CONTRACT NO. 66225				



SECTION C-C  
SCALE: 1/2"=1'-0"

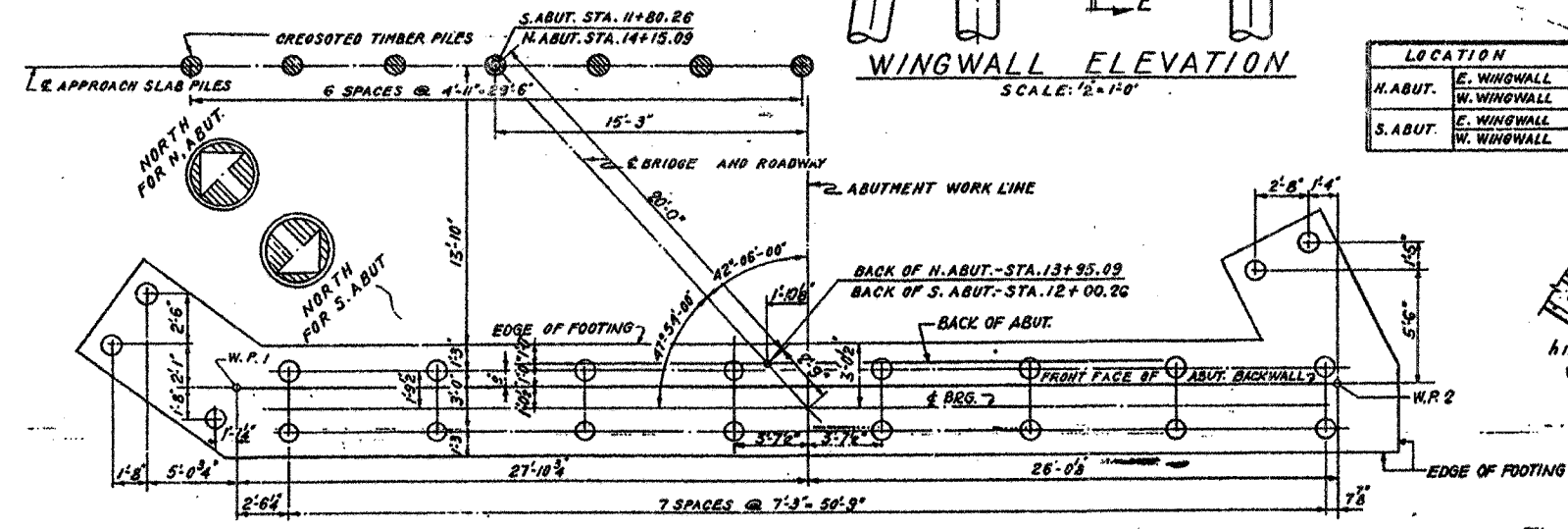


WINGWALL ELEVATION  
SCALE: 1/2"=1'-0"



SECTION E-E  
SCALE: 1/2"=1'-0"

SECTION F-F  
SCALE: 1/2"=1'-0"



PILE SCHEDULE

CONCRETE PILES, CAPACITY 25 TONS		
LOCATION	NO. OF PILES	LENGTH
NORTH ABUTMENT	21	25'
SOUTH ABUTMENT	21	20'

\* INCLUDES 1 TEST PILE

CREOSOTED TIMBER PILES, CAPACITY 15 TONS		
LOCATION	NO. OF PILES	LENGTH
NORTH APPROACH	7	18'
SOUTH APPROACH	7	18'

PILE PLAN  
NORTH ABUTMENT SHOWN  
SOUTH ABUTMENT SIMILAR EXCEPT AS NOTED  
SCALE: 1/4"=1'-0"

BILL OF MATERIAL FOR APPROACH SLAB PILES			
ITEM	UNIT	QUANTITY	
		N. APPROACH	S. APPROACH
CREOSOTED TIMBER PILES, UP TO 20 FEET	LIN. FT.	126	126

BILL OF MATERIAL FOR ABUTMENTS AND WINGWALLS			
ITEM	UNIT	QUANTITY	
		N. ABUT.	S. ABUT.
CLASS X CONCRETE	CU. YDS.	71.0	71.2
REINFORCEMENT BARS	POUNDS	4,260	4,270
CONCRETE PILES	LIN. FT.	500	420
TEST PILE, CONCRETE	EACH	-	-
CLASS A EXCAVATION FOR STRUCTURES	CU. YDS.	102	105

CORNER DETAILS, SECTION D-D  
SCALE: 1/2"=1'-0"

NOTE:  
FOR LOCATION OF SECTIONS C-C, D-D, E-E & F-F SEE SHT. B  
FOR ADDITIONAL NOTES SEE SHT. B

REVISIONS	
NAME	DATE

ILLINOIS DEPARTMENT OF TRANSPORTATION  
EXISTING BRIDGE PLANS  
EXISTING (SN 050-0025)

SCALE: VERT. \_\_\_\_\_  
HORIZ. \_\_\_\_\_  
DATE: 01/03/03

DRAWN BY: JETT  
DESIGNED BY: KUNTZMAN  
CHECKED BY: COLBROOK

GREENE & BRADFORD, INC.  
OF SPRINGFIELD

COMPUTER FILE NO.  
EX BRIDGE-6  
PROJECT 01194\_B.S  
10/30/03-JLJ