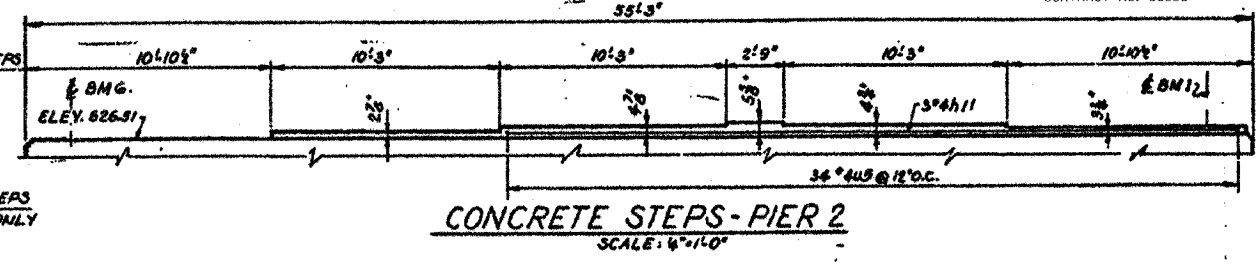
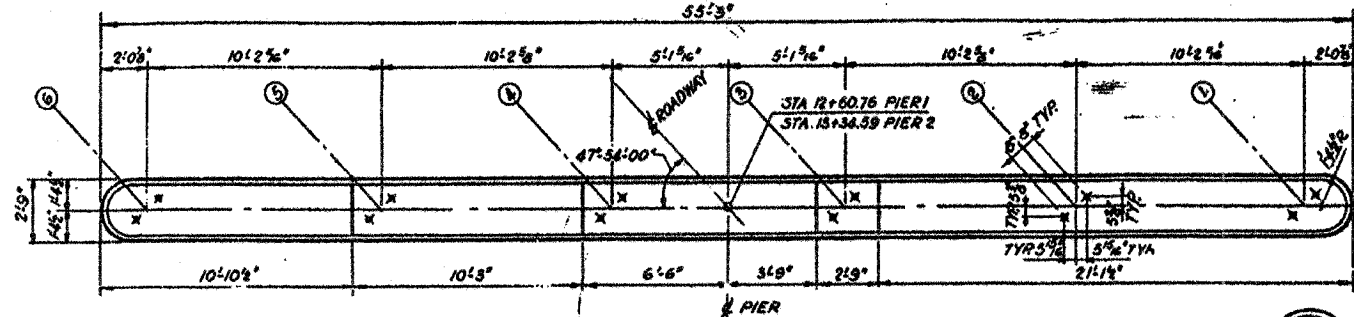


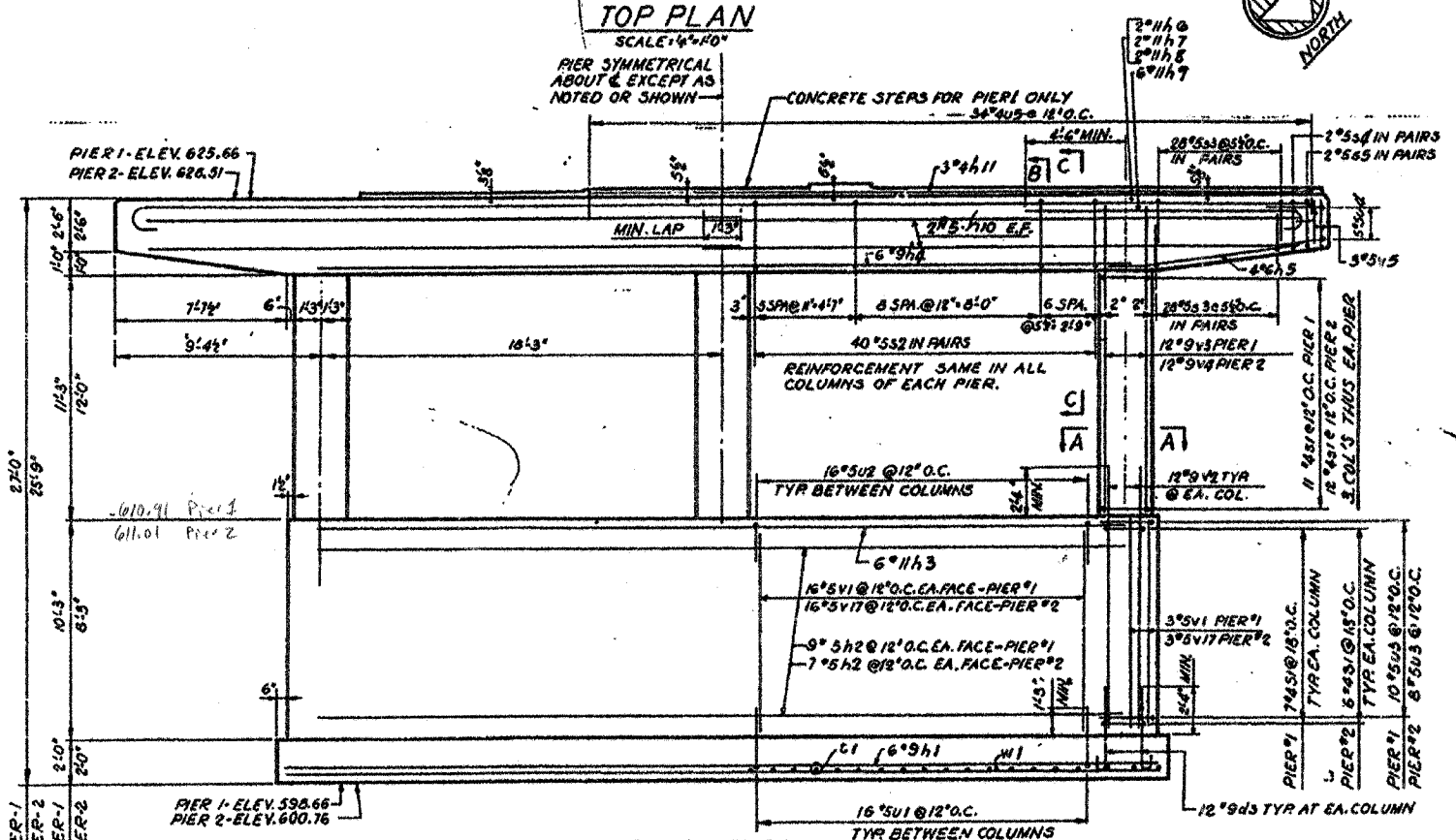
DESIGN	INT.	DATE	REASON

F.A.U. RTE.	SECTION	COUNTY	TOTAL SHEETS	SHEET NO.
6108	****	LASALLE	679	261
STA. _____ TO STA. _____		FED. ROAD DIST. NO. _____ ILLINOIS FED. AID PROJECT		
**** (70X, 71XIRS-1, 71X-VBRDM)				
CONTRACT NO. 66225				

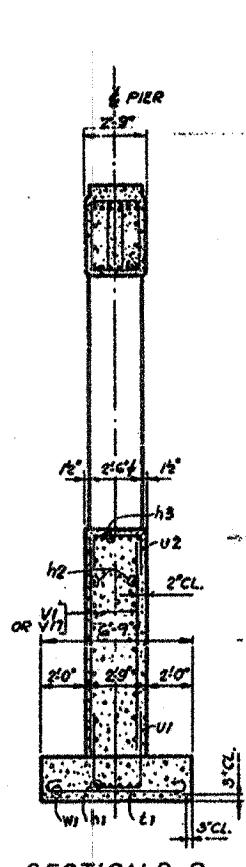


TOP PLAN
SCALE: 1/4"=1'-0"

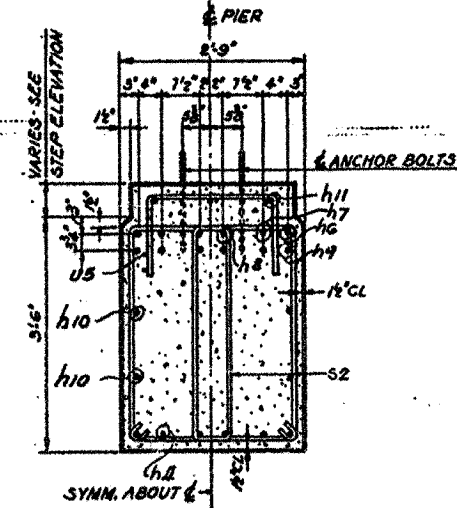
CONCRETE STEPS - PIER 2
SCALE: 1/4"=1'-0"



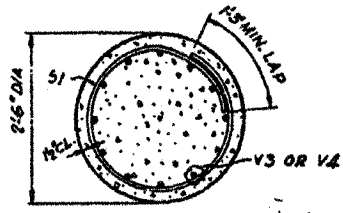
ELEVATION
SCALE: 1/4"=1'-0"



SECTION B-B
SCALE: 1/4"=1'-0"



SECTION C-C
SCALE: 1/4"=1'-0"

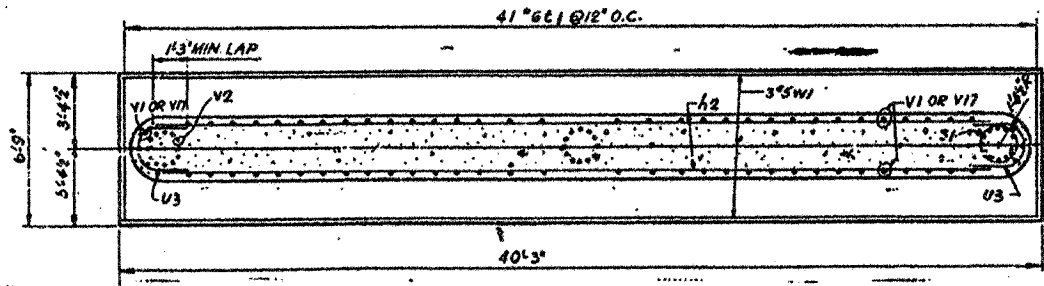


SECTION A-A
SCALE: 1/4"=1'-0"

NOTE: FOR BAR LIST, SEE SHT. 11 OF 12

BILL OF MATERIALS

ITEM	UNIT	QUANTITY	
		PIER 1	PIER 2
CLASS X CONCRETE	CU YD	87.1	79.3
REINFORCEMENT BARS	LBS.	18,560	16,330
CLASS A EXCAVATION FOR STRUCTURES	CU YD	77	142



FOOTING PLAN
SCALE: 1/4"=1'-0"

NOTE: SPACE REINFORCEMENT IN TOP BEAM TO AVOID INTERFERENCE WITH DRILLING OF HOLES FOR ANCHOR BOLTS.

PLOTS & CHECKS	INT.	DATE	REASON

FILE NAME	DATE

CHECKS	INT.	DATE	REASON

REVISIONS	
NAME	DATE

ILLINOIS DEPARTMENT OF TRANSPORTATION
EXISTING BRIDGE PLANS
 EXISTING (SN 050-0025)

SCALE: VERT. _____ HORIZ. _____
 DATE: 01/03/03

DRAWN BY: JETT
 DESIGNED BY: KUNTZMAN
 CHECKED BY: COLBROOK

GREENE & BRADFORD, INC.
 OF SPRINGFIELD
 1000 WEST MAIN STREET
 SPRINGFIELD, ILLINOIS 62761
 (217) 223-1100 FAX (217) 223-1101
 WWW.GREENE-AND-BRADFORD.COM

COMPUTER FILE NO.
 EX BRIDGE-7
 PROJECT 01194.B.S
 10/30/03-JLJ