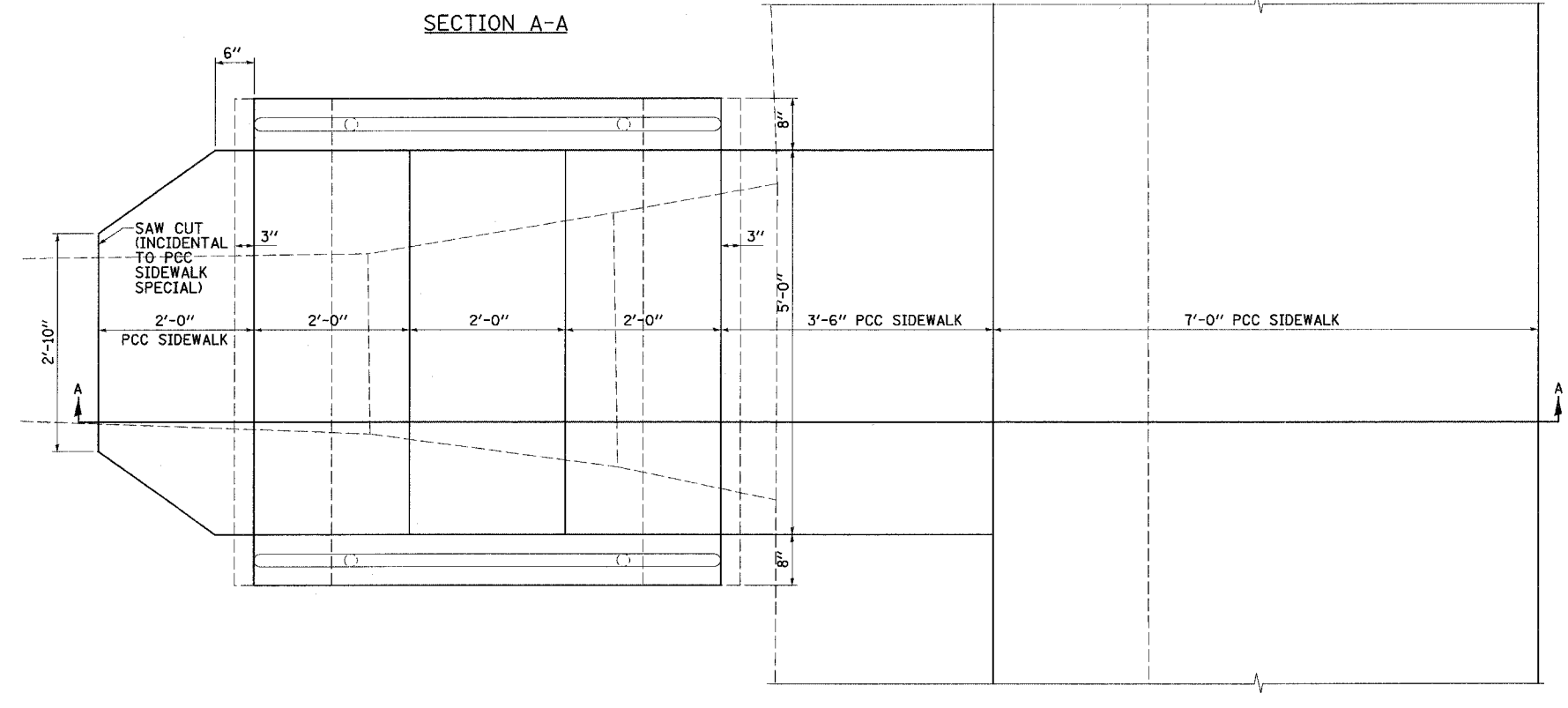
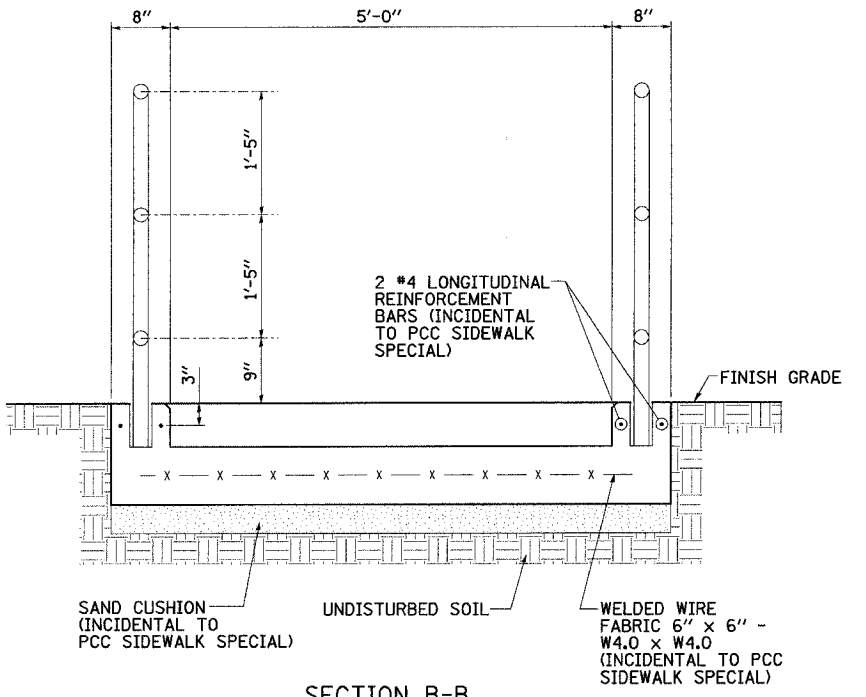
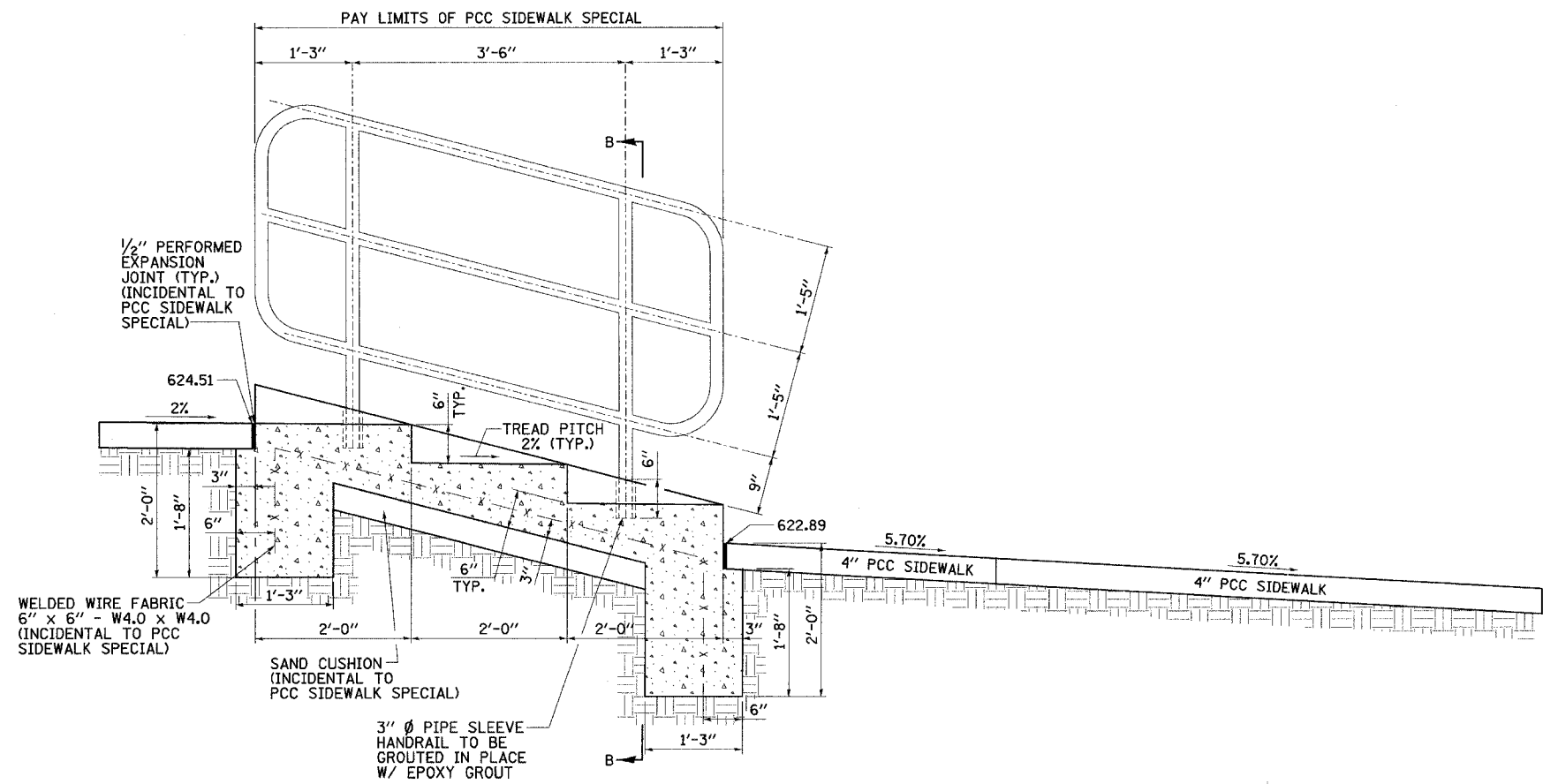


DESIGN		
INT.	DATE	REASON

PLOTS & CHECKS			
INT.	DATE	NO.	REASON

CHECKS		
INT.	DATE	REASON

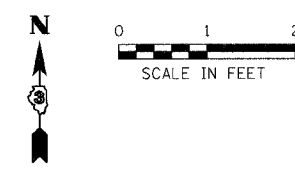
FAU RTE.	SECTION	COUNTY	TOTAL SHEETS	SHEET NO.
6108	***	LA SALLE	679	280
STA.	TO STA.			
FED. ROAD DIST. NO.		ILLINOIS	FED. AID PROJECT	
*** (70X,71X)RS-1, (71X-VBR)DM				
CONTRACT NO. 66225				



### BILL OF MATERIALS

ITEM	QUANTITY	UNIT
PCC SIDEWALK SPECIAL	38.0	SO. FT
PIPE HANDRAIL, SPECIAL	62.3	FOOT

NOTE: ALL EXPOSED EDGES SHALL HAVE A 3/4" CHAMFER.



REVISIONS	
NAME	DATE

ILLINOIS DEPARTMENT OF TRANSPORTATION  
PCC SIDEWALK SPECIAL DETAIL  
LT. STA. 180+69.19

FAU 6108 (IL RTE. 351)  
SEC. (70X,71X)RS-1, (71X-VBR)DM  
LA SALLE COUNTY

SCALE: VERT. DRAWN BY: LANDREY  
 HORIZ. DESIGNED BY: BOTT  
 DATE: 9/23/04 CHECKED BY: COLBROOK

**GREENE & BRADFORD, INC.** COMPUTER FILE NO.  
STEPIDETAIL-13

**PROJECT** 01194\_B.S  
09/24/04-MML

South:\o4\11\stecpet\1.dgn 12/17/2004 10:30:15 AM jlabr + (rpg)