

DESIGN		
INT.	DATE	REASON

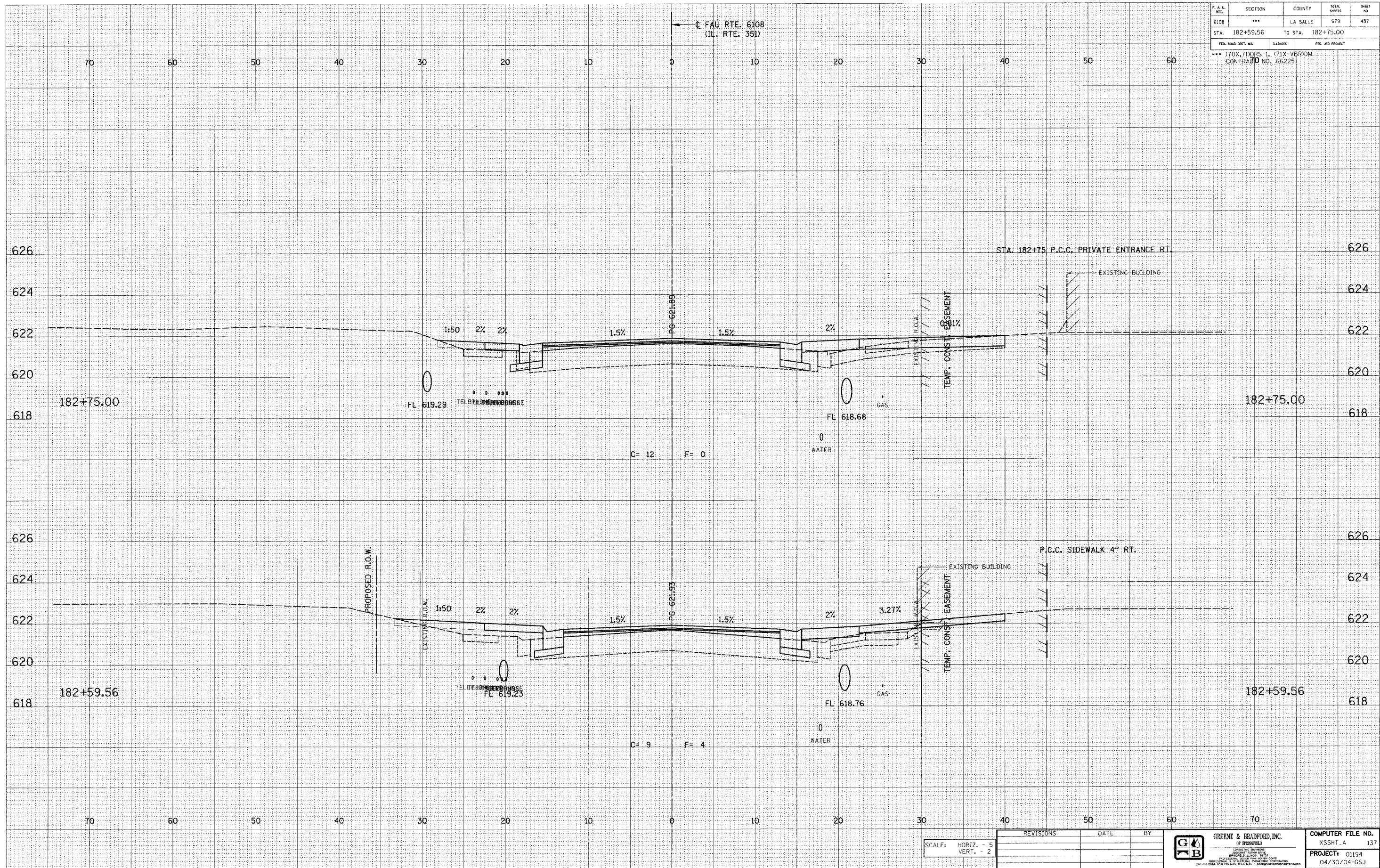
BY	DATE

PLOTS & CHECKS			
INT.	DATE	NO.	REASON

BY	DATE

CHECKS		
INT.	DATE	REASON

P.A. L. RTE.	SECTION	COUNTY	TOTAL SHEETS	SHEET NO.
6108	***	LA SALLE	679	437
STA. 182+59.56	TO STA. 182+75.00			
FED. ROAD DIST. NO.	ILLINOIS	FED. AID PROJECT		
*** (70X, 71X)RS-1, (71X-V)RDIM. CONTRACT NO. 66225				



E-XSEC 1:1 8/25/98

SCALE: HORIZ. - 5
VERT. - 2

REVISIONS	DATE	BY

GREENE & BRADFORD, INC.
OF SPRINGFIELD
REGISTERED PROFESSIONAL ENGINEERS
REGISTERED PROFESSIONAL SURVEYORS
REGISTERED PROFESSIONAL LAND SURVEYORS
REGISTERED PROFESSIONAL GEODETIC SURVEYORS
REGISTERED PROFESSIONAL CIVIL ENGINEERS
REGISTERED PROFESSIONAL ARCHITECTS
REGISTERED PROFESSIONAL INTERIOR DESIGNERS
REGISTERED PROFESSIONAL ELECTRICAL ENGINEERS
REGISTERED PROFESSIONAL MECHANICAL ENGINEERS
REGISTERED PROFESSIONAL CHEMICAL ENGINEERS
REGISTERED PROFESSIONAL INDUSTRIAL ENGINEERS
REGISTERED PROFESSIONAL AERONAUTICAL ENGINEERS
REGISTERED PROFESSIONAL METALLURGICAL ENGINEERS
REGISTERED PROFESSIONAL NUCLEAR ENGINEERS
REGISTERED PROFESSIONAL PETROLEUM ENGINEERS
REGISTERED PROFESSIONAL TRANSPORTATION ENGINEERS
REGISTERED PROFESSIONAL ENVIRONMENTAL ENGINEERS
REGISTERED PROFESSIONAL SANITARY ENGINEERS
REGISTERED PROFESSIONAL WATER RESOURCES ENGINEERS
REGISTERED PROFESSIONAL MARINE ENGINEERS
REGISTERED PROFESSIONAL AERONAUTICAL ENGINEERS
REGISTERED PROFESSIONAL METALLURGICAL ENGINEERS
REGISTERED PROFESSIONAL NUCLEAR ENGINEERS
REGISTERED PROFESSIONAL PETROLEUM ENGINEERS
REGISTERED PROFESSIONAL TRANSPORTATION ENGINEERS
REGISTERED PROFESSIONAL ENVIRONMENTAL ENGINEERS
REGISTERED PROFESSIONAL SANITARY ENGINEERS
REGISTERED PROFESSIONAL WATER RESOURCES ENGINEERS
REGISTERED PROFESSIONAL MARINE ENGINEERS

COMPUTER FILE NO. XSSHT_A 137
PROJECT: 01194
04/30/04-GSJ

FAU RTE. 6108 (IL. RTE. 351) LA SALLE CO.