

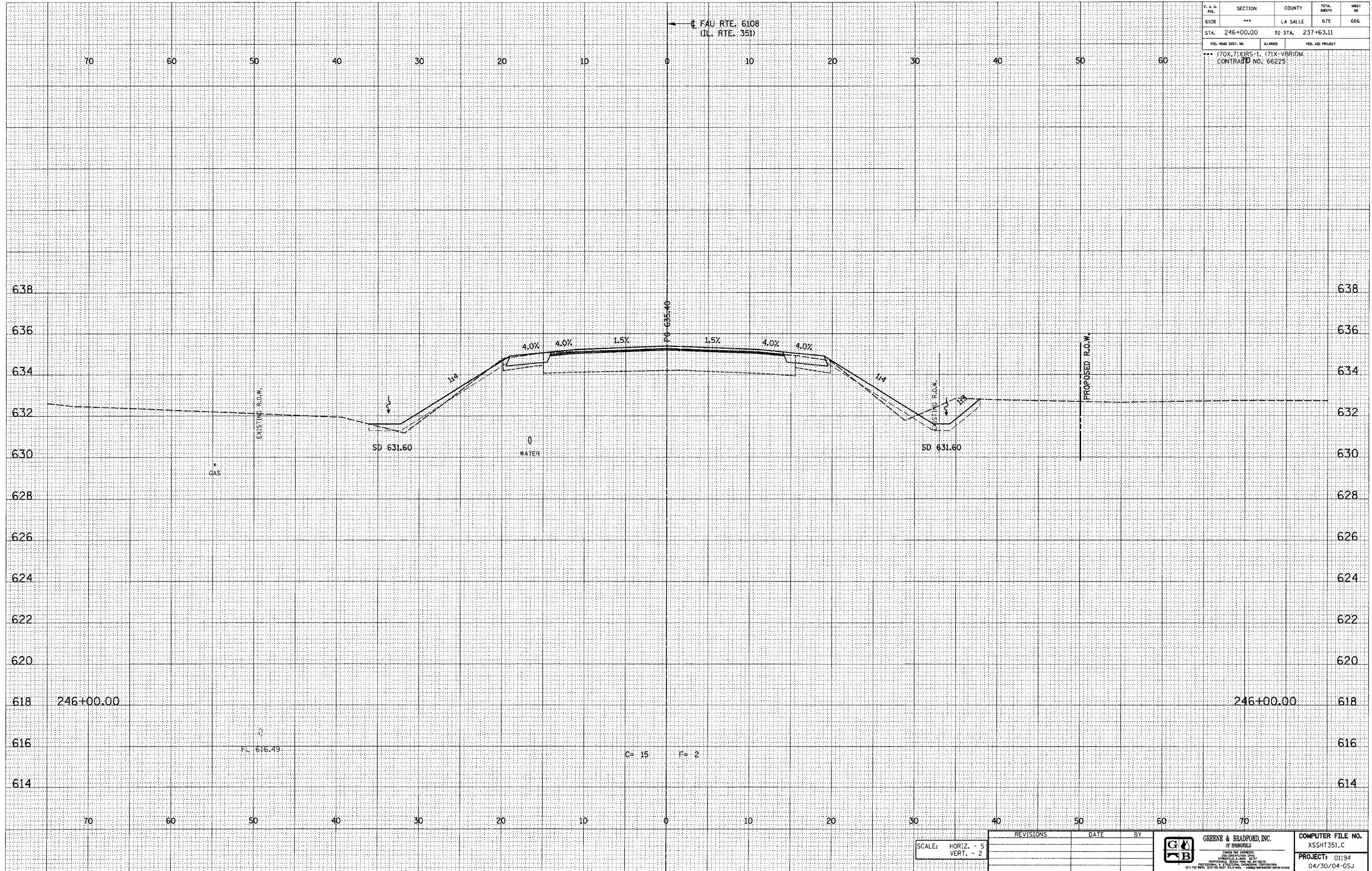
DESIGN		
INT.	DATE	REASON

BY _____	DATE _____

PLOTS & CHECKS		
INT.	DATE	REASON

BY _____	DATE _____

CHECKS		
INT.	DATE	REASON



F.A.U. ETL	SECTION	COUNTY	TOTAL SHEETS	SHEET NO.
6108	***	LA SALLE	679	666
STA. 246+00.00	TO STA. 237+63.11			
FED. ROAD DIST. NO.	BLINDS	FED. AID PROJECT		
*** (70X, 71X)RS-1, (71X-VBR)DM				
CONTRACT NO. 66225				

SCALE: HORIZ. - 5
VERT. - 2

REVISIONS	DATE	BY

	GREENE & BRADFORD, INC. CONSULTING ENGINEERS OF SPRINGFIELD <small>CONSULTING ENGINEERS LICENSE NO. 1212 PROFESSIONAL DESIGN FIRM NO. 201-0079 REGISTERED PROFESSIONAL ENGINEERS 675 1/2 WEST 19TH ST. ST. LOUIS, MISSOURI 63105-3533</small>	COMPUTER FILE NO. XSSH351.C PROJECT: 01194 04/30/04-GSJ
	<small>E-XSEC 1:1 8/25/98</small>	

FAU RTE. 6108 (IL. RTE. 351) LA SALLE CO.