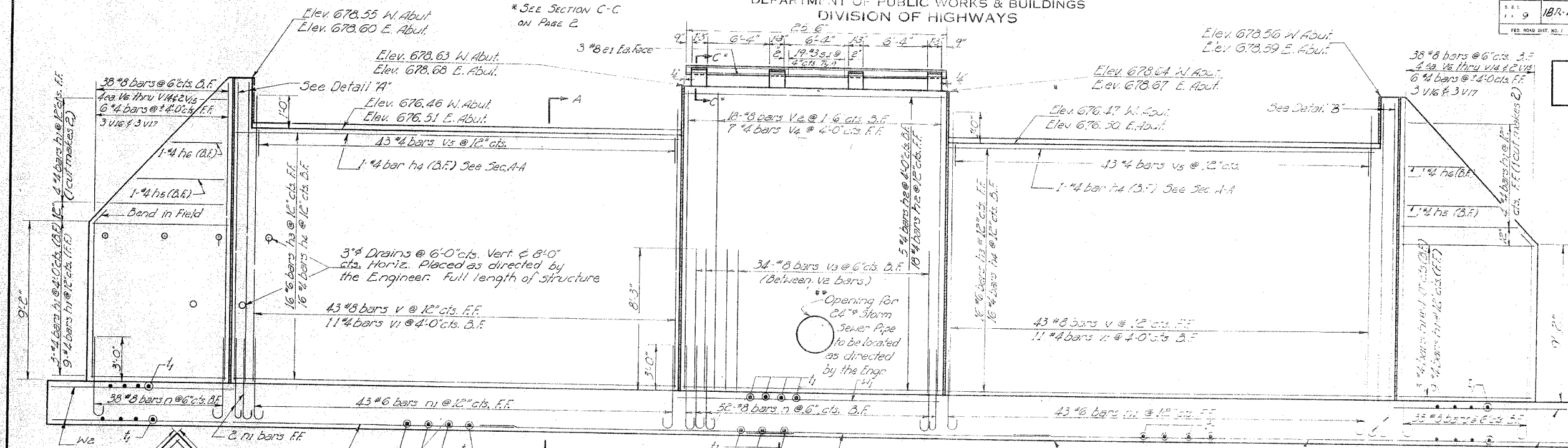


STATE OF ILLINOIS  
DEPARTMENT OF PUBLIC WORKS & BUILDINGS  
DIVISION OF HIGHWAYS

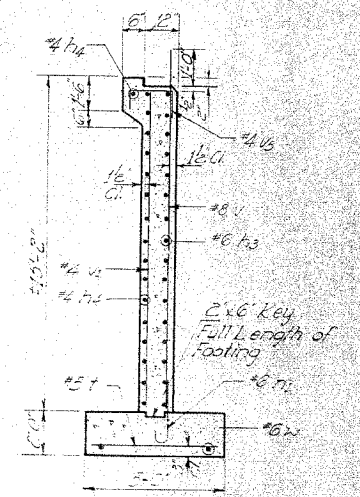
ROUTE NO.	SECTION	COUNTY	TOTAL SHEETS	SHEET NO.
S. I. 9	18R-B	IROQUOIS		3
FED. ROAD DIST. NO.	ILLINOIS	FED. AID PROJECT		

SHEET NO. 3  
4 SHEETS



ELEVATION

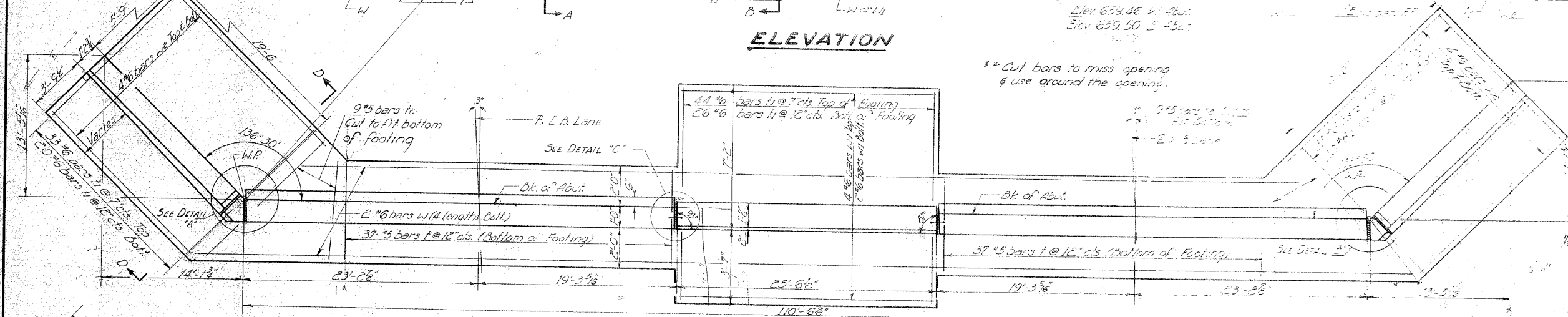
FOR INFORMATION ONLY



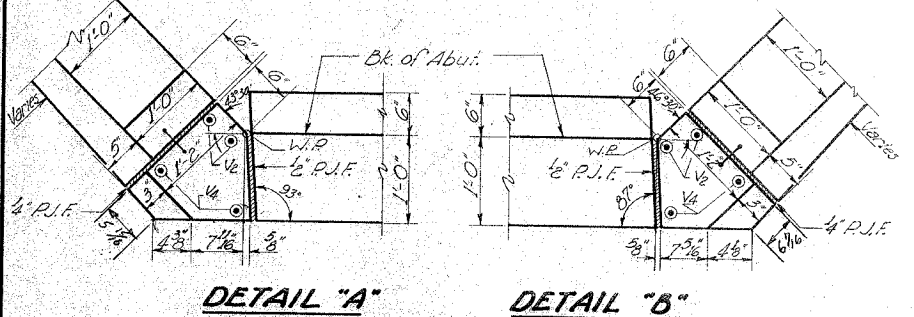
SECTION A-A

BILL OF MATERIAL  
2 ABUTMENTS

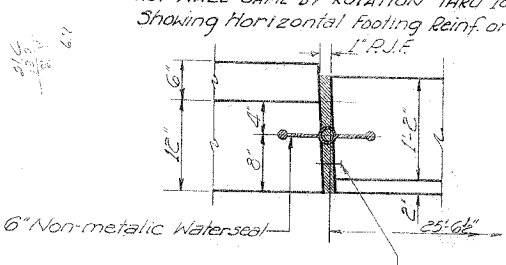
Item	Quantity	Unit	Notes
1	15.77	cu yd	Concrete
2	12.71	cu yd	Concrete
3	16.71	cu yd	Concrete
4	8.3	cu yd	Concrete
5	16.71	cu yd	Concrete
6	3.9	cu yd	Concrete
7	9.5	cu yd	Concrete
8	10.3	cu yd	Concrete
9	12.1	cu yd	Concrete
10	12.9	cu yd	Concrete
11	13.8	cu yd	Concrete
12	12.5	cu yd	Concrete
13	15.3	cu yd	Concrete
14	12.1	cu yd	Concrete
15	12.8	cu yd	Concrete
16	12.0	cu yd	Concrete
17	12.0	cu yd	Concrete
18	12.0	cu yd	Concrete
19	12.0	cu yd	Concrete
20	12.0	cu yd	Concrete
21	12.0	cu yd	Concrete
22	12.0	cu yd	Concrete
23	12.0	cu yd	Concrete
24	12.0	cu yd	Concrete
25	12.0	cu yd	Concrete
26	12.0	cu yd	Concrete
27	12.0	cu yd	Concrete
28	12.0	cu yd	Concrete
29	12.0	cu yd	Concrete
30	12.0	cu yd	Concrete
31	12.0	cu yd	Concrete
32	12.0	cu yd	Concrete
33	12.0	cu yd	Concrete
34	12.0	cu yd	Concrete
35	12.0	cu yd	Concrete
36	12.0	cu yd	Concrete
37	12.0	cu yd	Concrete
38	12.0	cu yd	Concrete
39	12.0	cu yd	Concrete
40	12.0	cu yd	Concrete
41	12.0	cu yd	Concrete
42	12.0	cu yd	Concrete
43	12.0	cu yd	Concrete
44	12.0	cu yd	Concrete
45	12.0	cu yd	Concrete
46	12.0	cu yd	Concrete
47	12.0	cu yd	Concrete
48	12.0	cu yd	Concrete
49	12.0	cu yd	Concrete
50	12.0	cu yd	Concrete
51	12.0	cu yd	Concrete
52	12.0	cu yd	Concrete
53	12.0	cu yd	Concrete
54	12.0	cu yd	Concrete
55	12.0	cu yd	Concrete
56	12.0	cu yd	Concrete
57	12.0	cu yd	Concrete
58	12.0	cu yd	Concrete
59	12.0	cu yd	Concrete
60	12.0	cu yd	Concrete
61	12.0	cu yd	Concrete
62	12.0	cu yd	Concrete
63	12.0	cu yd	Concrete
64	12.0	cu yd	Concrete
65	12.0	cu yd	Concrete
66	12.0	cu yd	Concrete
67	12.0	cu yd	Concrete
68	12.0	cu yd	Concrete
69	12.0	cu yd	Concrete
70	12.0	cu yd	Concrete
71	12.0	cu yd	Concrete
72	12.0	cu yd	Concrete
73	12.0	cu yd	Concrete
74	12.0	cu yd	Concrete
75	12.0	cu yd	Concrete
76	12.0	cu yd	Concrete
77	12.0	cu yd	Concrete
78	12.0	cu yd	Concrete
79	12.0	cu yd	Concrete
80	12.0	cu yd	Concrete
81	12.0	cu yd	Concrete
82	12.0	cu yd	Concrete
83	12.0	cu yd	Concrete
84	12.0	cu yd	Concrete
85	12.0	cu yd	Concrete
86	12.0	cu yd	Concrete
87	12.0	cu yd	Concrete
88	12.0	cu yd	Concrete
89	12.0	cu yd	Concrete
90	12.0	cu yd	Concrete
91	12.0	cu yd	Concrete
92	12.0	cu yd	Concrete
93	12.0	cu yd	Concrete
94	12.0	cu yd	Concrete
95	12.0	cu yd	Concrete
96	12.0	cu yd	Concrete
97	12.0	cu yd	Concrete
98	12.0	cu yd	Concrete
99	12.0	cu yd	Concrete
100	12.0	cu yd	Concrete



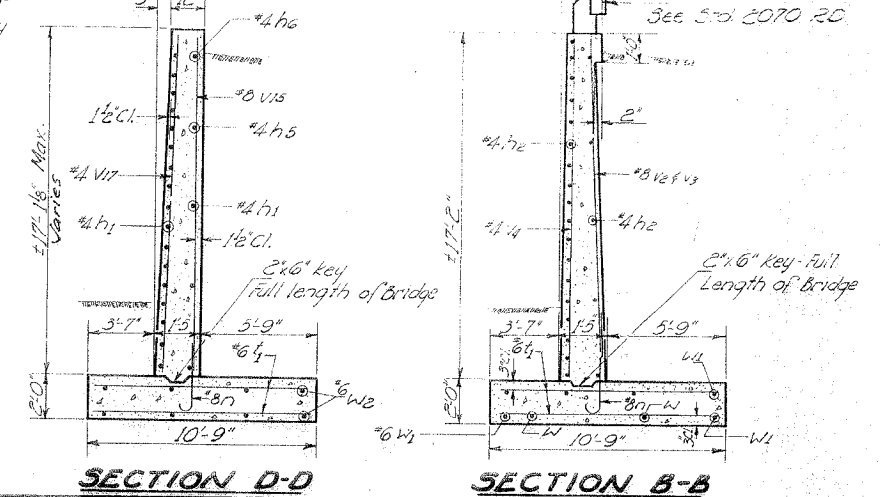
PLAN - WEST ABUT. WALL



DETAIL 'A'      DETAIL 'B'



DETAIL 'C'



SECTION D-D      SECTION B-B

DESIGNED *Ronald Aardike*  
 CHECKED *J. Barrera*  
 DRAWN *A. Barrera*  
 CHECKED *Debra*

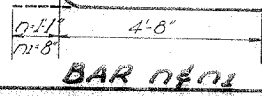
EXAMINED *W.E. Brennan*  
 ENGINEER OF BRIDGE AND TRAFFIC STRUCTURES

PASSED *Ch. Bennett*  
 SUPERVISOR OF DESIGN

APPROVED *R.H. Bartelmann*  
 CHIEF HIGHWAY ENGINEER

JUNE 26 1962

BAR VS



BAR n/n

Note: See Sheet #2 for detail of bars d, r & s.

ABUTMENTS  
 S.B.I. RT. 8 SEC. 18R-B  
 IROQUOIS COUNTY  
 STA. 2917+1750

Revised 11/27/65 Handrail added from 2070 to 1750 to Sta. 2070 R.O. E.A.R./J.B.  
 Reinf. Bars added from 29270 to 40,800