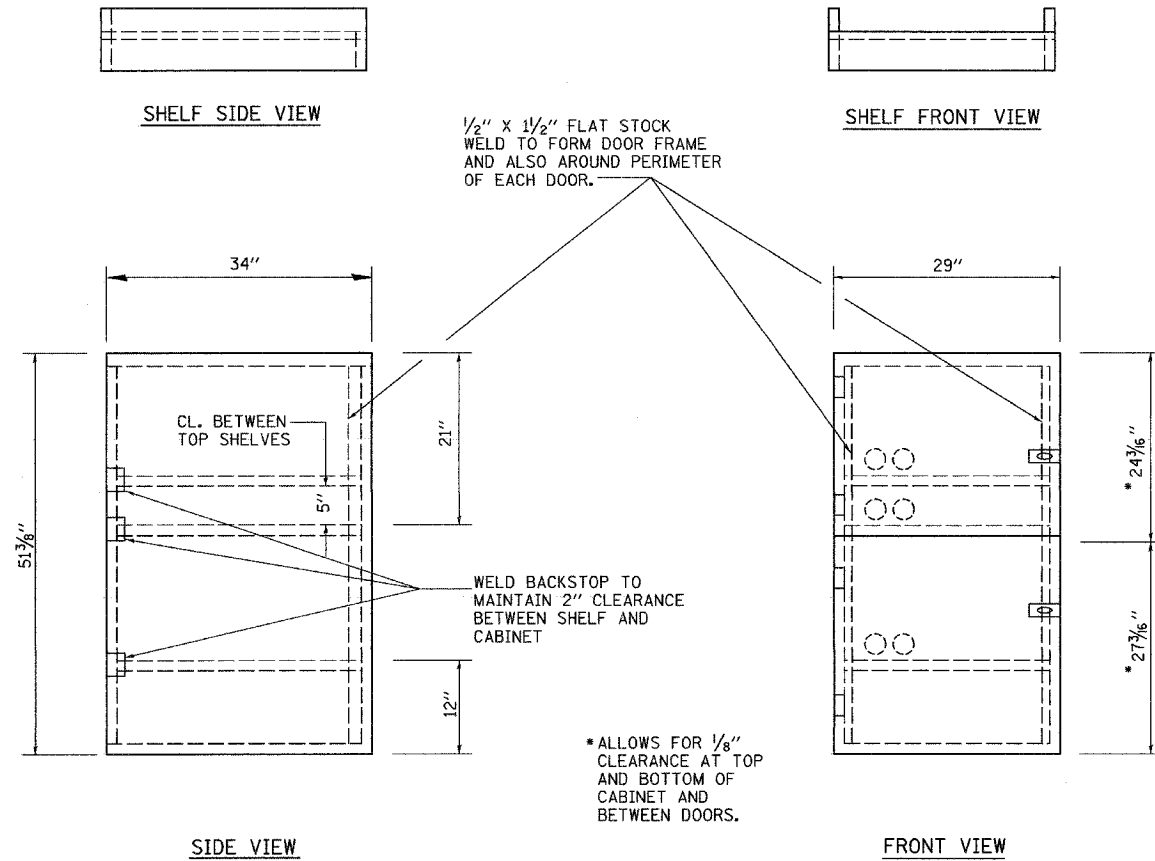


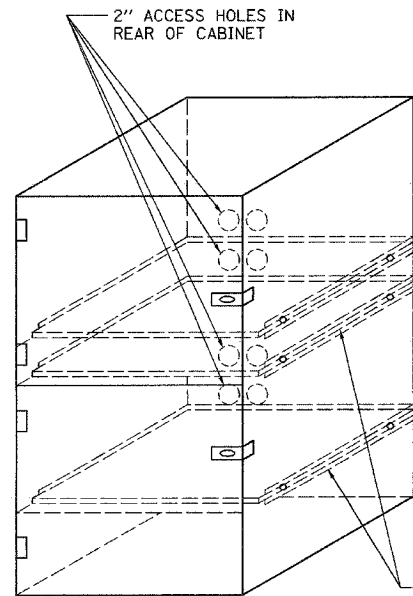
F.A.P. RTE. 591/ 860	SECTION (12) RS-4	COUNTY KENDALL	TOTAL SHEETS 23	SHEET NO. 23
STA.		TO STA.		
FED. ROAD DIST. NO.		ILLINOIS FED. AID PROJECT		
CONTRACT # 66432				



* ALLOWS FOR 1/8" CLEARANCE AT TOP AND BOTTOM OF CABINET AND BETWEEN DOORS.

NOTES:

1. USE 16 GAUGE STEEL FOR CABINET.
2. THE TOP SHELF SHALL SLIDE IN OR OUT WITH THE TOP DOOR OPEN.
3. ALL HINGES AND HASPS WILL BE WELDED TO THE CABINET.
4. ALL EDGES SHALL BE GROUND SMOOTH.
5. TWO (2" DIA.) ACCESS HOLES WILL BE REQUIRED FOR EACH SHELF.
6. CABINET SHALL BE PAINTED WITH TWO COATS OF FLAT PAINT.
7. 2 EACH MATCHING KEY PADLOCKS, WITH 3 KEYS PROVIDED, MASTER MODEL 3 T OR EQUIVALENT.
8. 4 EACH PLAIN STEEL, NON-REMOVABLE PIN, NO HOLE 4"x4" SQUARE CORNER HINGES TO BE WELDED ON.
9. 2 EACH EXTRA HEAVY, PLAIN STEEL, FIXED STAPLE, NO HOLE, 7/4" HASPS TO BE WELDED ON.



LOCKABLE COMPUTER CABINET

TYPE OF MARKING	WIDTH OF LINE	PATTERN	COLOR	SPACING / REMARKS
CENTERLINE ON 2 LANE PAVEMENT	6"	SKIP-DASH	YELLOW	10' LINE WITH 30' SPACE
CENTERLINE ON MULTI-LANE UNDIVIDED PAVEMENT	2 @ 6"	SOLID	YELLOW	11" C-C
NO PASSING ZONE LINES: FOR ONE DIRECTION FOR BOTH DIRECTIONS	4" 2 @ 4"	SOLID SOLID	YELLOW YELLOW	50' C-C FROM SKIP-DASH CENTERLINE 11" C-C OMIT SKIP-DASH CENTERLINE BETWEEN
LANE LINES	8"	SKIP-DASH	WHITE	10' LINE WITH 30' SPACE
DOTTED LINES (EXTENSIONS OF CENTER, LANE OR TURN LANE MARKINGS)	SAME AS LINE BEING EXTENDED	SKIP-DASH	SAME AS LINE BEING EXTENDED	2' LINE WITH 6' SPACE
EDGE LINES	4"	SOLID	YELLOW-LEFT WHITE-RIGHT	OUTLINE MOUNTABLE MEDIANS IN YELLOW; EDGE LINES ARE NOT USED NEXT TO BARRIER CURB
TURN LANE MARKINGS	8" LINE; FULL SIZE LETTERS & SYMBOLS 8"	SOLID	WHITE	SEE TYPICAL TURN LANE MARKING DETAIL
TWO WAY LEFT TURN MARKING	2 @ 6" EACH DIRECTION 8" LEFT ARROW	SKIP-DASH AND SOLID IN PAIRS	YELLOW WHITE	10' LINE WITH 30' SPACE FOR SKIP-DASH; 8" C-C BETWEEN SOLID LINE AND SKIP-DASH LINE SEE TYPICAL TWO-WAY LEFT TURN MARKING DETAIL
CROSSWALK LINES (PEDESTRIAN) A. DIAGONALS (BIKE & EQUESTRIAN) B. LONGITUDINAL BARS (SCHOOL)	2 @ 6" 12 @ 45° 12 @ 90°	SOLID SOLID SOLID	WHITE WHITE WHITE	NOT LESS THAN 6' APART 2' APART 2' APART SEE TYPICAL CROSSWALK MARKING DETAILS.
STOP LINES	24"	SOLID	WHITE	PLACE 4' IN ADVANCE OF AND PARALLEL TO CROSSWALK, IF PRESENT. OTHERWISE, PLACE AT DESIRED STOPPING POINT.
PAINTED MEDIANS	2 @ 4" WITH 12" DIAGONALS @ 45° NO DIAGONALS USED FOR 4' WIDE MEDIANS	SOLID	YELLOW; TWO WAY TRAFFIC WHITE; ONE WAY TRAFFIC	11" C-C FOR THE DOUBLE LINE SEE TYPICAL PAINTED MEDIAN MARKING.
GORE MARKING AND CHANNELIZING LINES	8" WITH 12" DIAGONALS @ 45°	SOLID	WHITE	DIAGONALS: 15' C-C (LESS THAN 30 MPH) 20' C-C (30 MPH TO 45 MPH) 30' C-C (OVER 45 MPH)
RAILROAD CROSSING	24' TRANSVERSE LINES; "RR" IS 6' LETTERS; 16' LINE FOR "X"	SOLID	WHITE	SEE STATE STANDARD 780001 AREA OF: "R"=4.3 SQ. FT. EACH "X"=54.0 SQ. FT.
SHOULDER DIAGONALS	12' @ 45°	SOLID	WHITE - RIGHT YELLOW - LEFT	50' C-C (LESS THAN 30 MPH) 75' C-C (30 MPH TO 45 MPH) 150' C-C (OVER 45 MPH)

FOR FURTHER DETAILS ON PAVEMENT MARKING REFER TO STANDARD SPECIFICATIONS FOR ROAD AND BRIDGE CONSTRUCTION ADOPTED JANUARY 1, 1997 AND STATE STANDARD 780001.

REV. 01/21/05

REVISIONS		ILLINOIS DEPARTMENT OF TRANSPORTATION
NAME	DATE	
		DETAILS

SCALE: VERT. N.T.S.
HORIZ. N.T.S.
DATE 12/23/04

DRAWN BY MAP
CHECKED BY RRM