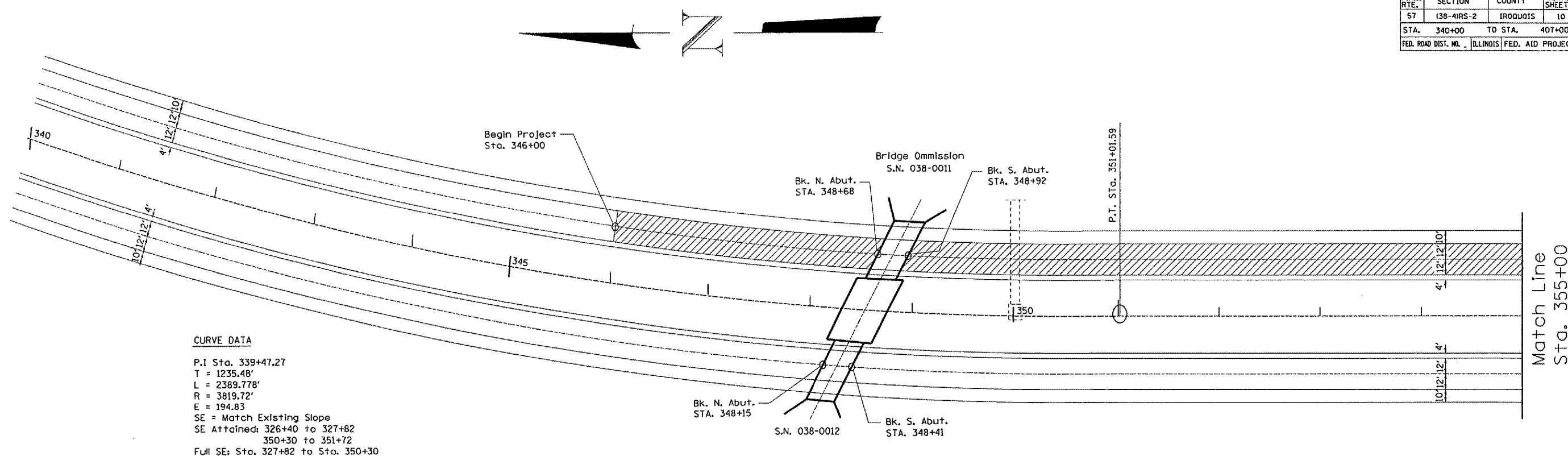
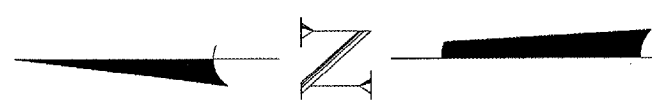


F.A.I. RTE.	SECTION	COUNTY	TOTAL SHEETS	SHEET NO.
57	138-4RS-2	IROQUOIS	10	6
STA. 340+00		TO STA. 407+00		
FED. ROAD DIST. NO. ILLINOIS FED. AID PROJECT				

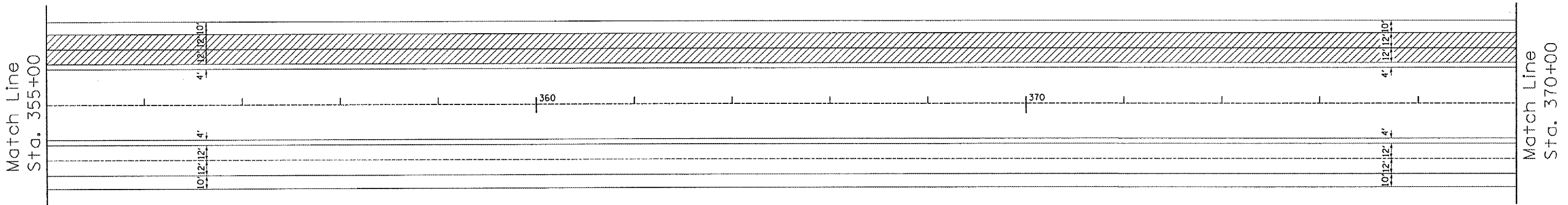


CURVE DATA
 P.I Sta. 339+47.27
 T = 1235.48'
 L = 2389.778'
 R = 3819.72'
 E = 194.83
 SE = Match Existing Slope
 SE Attained: 326+40 to 327+82
 350+30 to 351+72
 Full SE: Sta. 327+82 to Sta. 350+30

 1 3/4" BITUMINOUS MILLING AND RESURFACING



 1 3/4" BITUMINOUS MILLING AND RESURFACING



DATE = 10/07/04
 FILE NAME = C:\main05\cm313\details.dgn

REVISIONS	
NAME	DATE

ILLINOIS DEPARTMENT OF TRANSPORTATION
PLAN DETAILS
 SCALE: VERT. _____
 HORIZ. _____
 DATE 10/07/04
 DRAWN BY RW
 CHECKED BY _____