

F.A.S. RTE.	SECTION	COUNTY	TOTAL SHEETS	SHEET NO.
1517	1N	McLEAN	21	1

**STATE OF ILLINOIS
DEPARTMENT OF TRANSPORTATION
DIVISION OF HIGHWAYS**

**PROPOSED
HIGHWAY PLANS**

**F.A.S. ROUTE 1517 (U.S. 150)
SECTION 1N
PROJECT HS-1517(109)
McLEAN COUNTY**

**INTERSECTION WITH TR 328 (2000 E. RD.), 0.57 MILE NW OF CH 27 AT DOWNS.
INSTALLATION OF LEFT TURN LANES ON U.S. 150 AT TR 328**

C-93-007-05

INDEX OF SHEETS

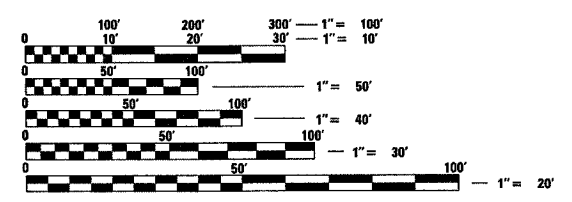
- 1 COVER SHEET
- 2 GENERAL NOTES
- 3 SUMMARY OF QUANTITIES
- 4-5 TYPICAL SECTIONS
- 6 SCHEDULES
- 7-10 PLAN AND PROFILE SHEETS
- 11 PAVEMENT MARKING PLAN SHEET
- 12 FLASHING BEACON INSTALLATIONS PLANS
- 13-14 DETAILS
- 15-21 CROSS SECTIONS

STANDARDS

- BLR-21-6 TYPICAL APPLICATIONS OF TRAFFIC CONTROL DEVICES FOR CONSTRUCTION
- 000001-04 STANDARD SYMBOLS, ABBREVIATIONS AND PATTERNS
- 280001-02 TEMPORARY EROSION CONTROL SYSTEMS
- 482001 BITUMINOUS SHOULDER ADJACENT TO FLEXIBLE PAVEMENT
- 482011-01 BIT. SHOULDER STRIPS/SHOULDERS WITH RS OR WIDENING & RS PROJECTS
- 542401 METAL END SECTION FOR PIPE CULVERTS
- 667101 PERMANENT SURVEY MARKERS
- 701001-01 OFF-ROAD OPERATIONS 2L, 2W, MORE THAN 4.5 m (15') AWAY
- 701006-02 OFF-ROAD OPERATIONS 2L, 2W, 4.5 m (15') TO 600 mm (24") FROM PAVEMENT EDGE
- 701301-02 LANE CLOSURE, 2L, 2W, SHORT TIME OPERATIONS
- 701306-01 LANE CLOSURE, 2L, 2W, SLOW MOVING OPERATIONS DAY ONLY, FOR SPEEDS ≥ 45 MPH
- 701326-02 LANE CLOSURE, 2L, 2W, PAVEMENT WIDENING, FOR SPEEDS ≥ 45 MPH
- 701331-02 LANE CLOSURE, 2L, 2W, WITH RUN-AROUND, FOR SPEEDS ≥ 45 MPH
- 701336-04 LANE CLOSURE, 2L, 2W, WORK AREAS IN SERIES, FOR SPEEDS ≥ 45 MPH
- 702001-05 TRAFFIC CONTROL DEVICES
- 781001-02 TYPICAL APPLICATIONS RAISED REFLECTIVE PAVEMENT MARKERS
- 805001 ELECTRICAL SERVICE INSTALLATION DETAILS
- 880001 SPAN WIRE MOUNTED SIGNALS AND FLASHING BEACON INSTALLATION

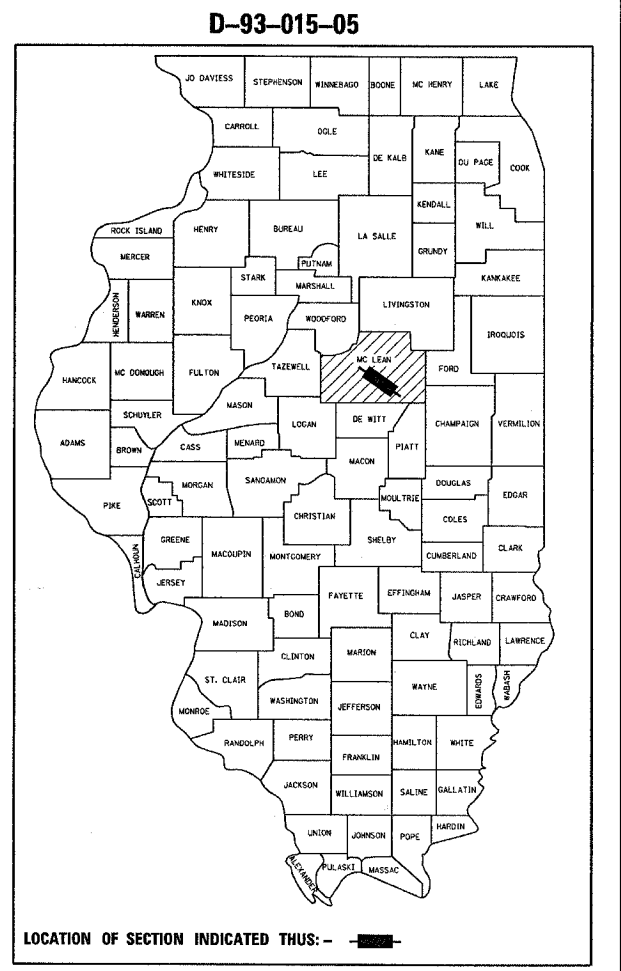
DISTRICT 3 NO. (815) 434-6131

PROJECT ENGINEER: DAVE BROVIAK
UNIT CHIEF: MARK JONES
TOWNSHIP: TOWN, DOWNS



FULL SIZE PLANS HAVE BEEN PREPARED USING STANDARD ENGINEERING SCALES. REDUCED SIZED PLANS WILL NOT CONFORM TO STANDARD SCALES. IN MAKING MEASUREMENTS ON REDUCED PLANS, THE ABOVE SCALES MAY BE USED.

J.U.L.I.E.
JOINT UTILITY LOCATION INFORMATION FOR EXCAVATION
1-800-892-0123

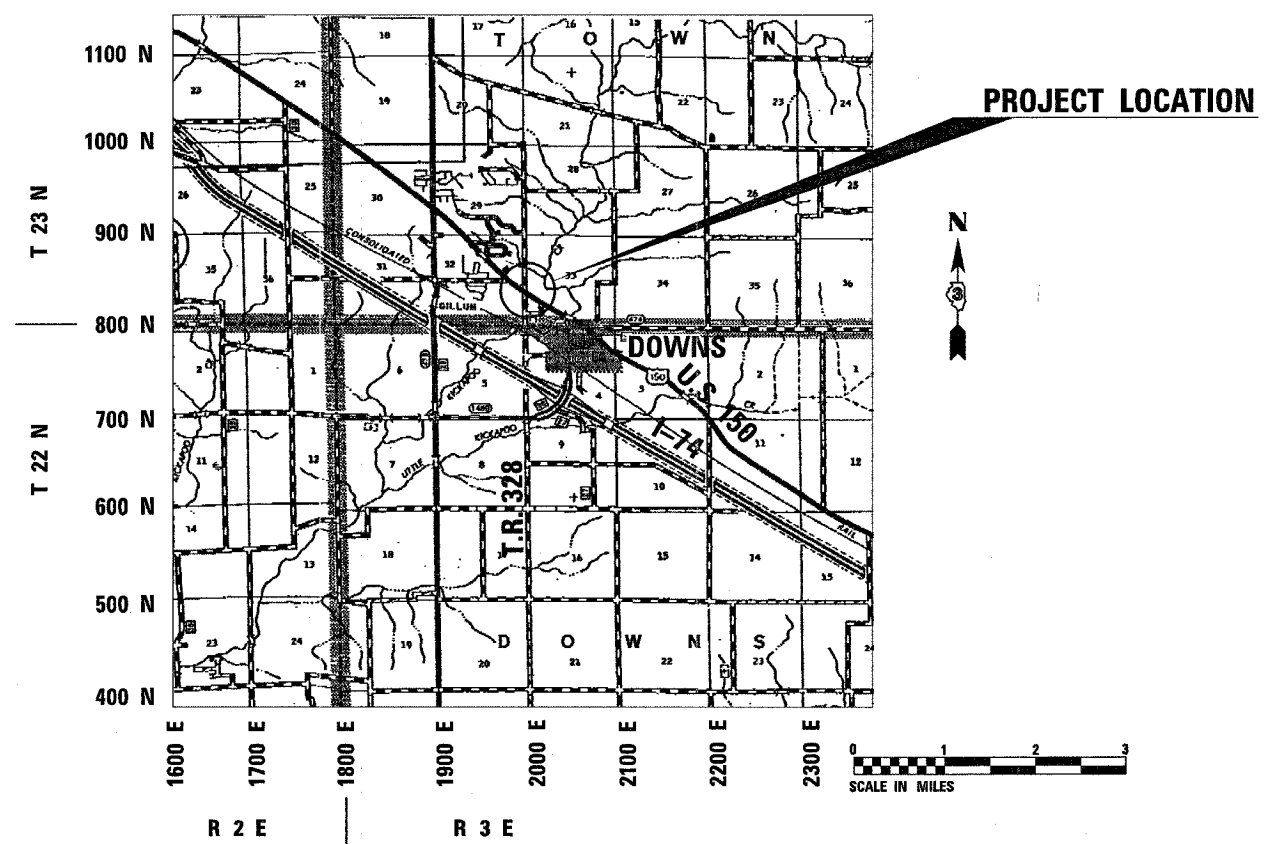


2004 ADT
U.S. 150 = 8050
P.V. = 92% S.U. = 4% M.U. = 4%
T.R. 328 /2000 E. ROAD = 775

STATE OF ILLINOIS
DEPARTMENT OF TRANSPORTATION
DIVISION OF HIGHWAYS

SUBMITTED December 14, 2004
John P. Kee DISTRICT ENGINEER
February 4, 2005
Mike Hine ENGINEER OF DESIGN AND ENVIRONMENT
February 4, 2005
Victor Mader DIRECTOR, DIVISION OF HIGHWAYS

**PRINTED BY THE AUTHORITY
OF THE STATE OF ILLINOIS**



GROSS & NET LENGTH OF PROJECT = 1405 FEET = 0.27 MILE