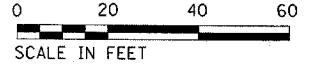
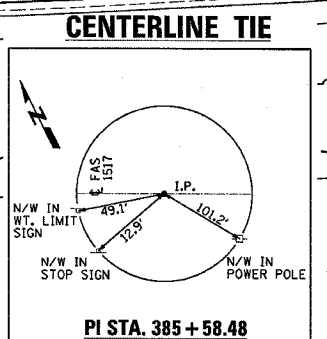
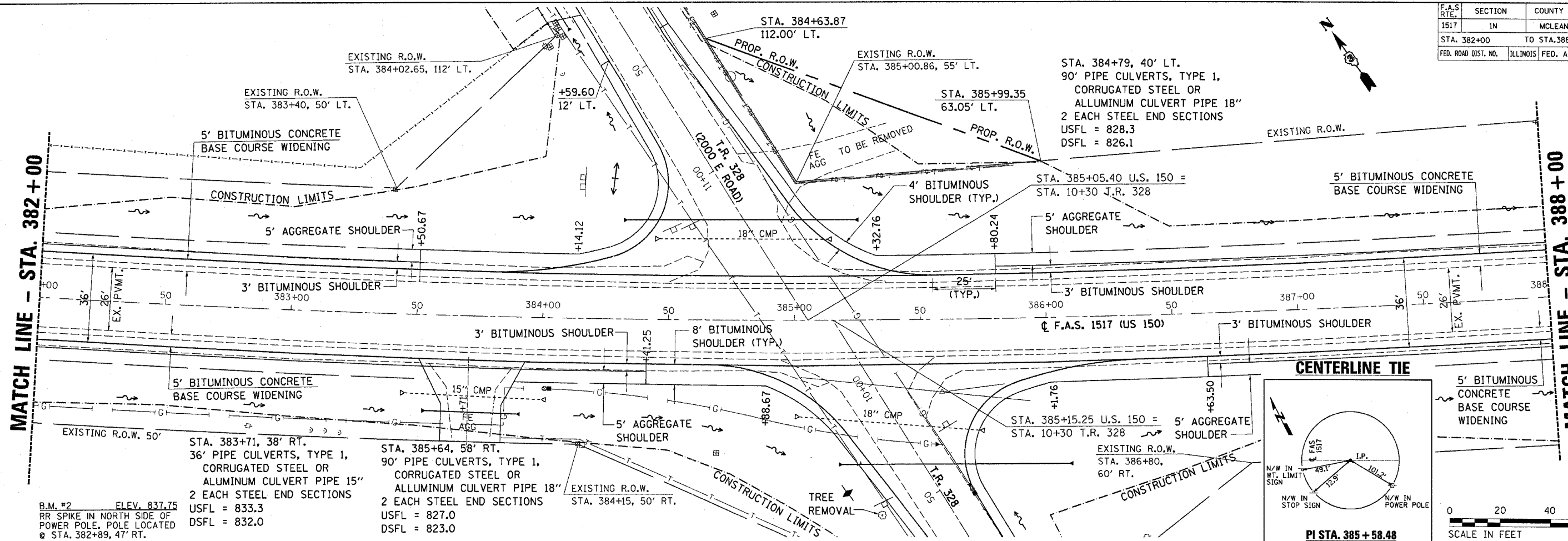
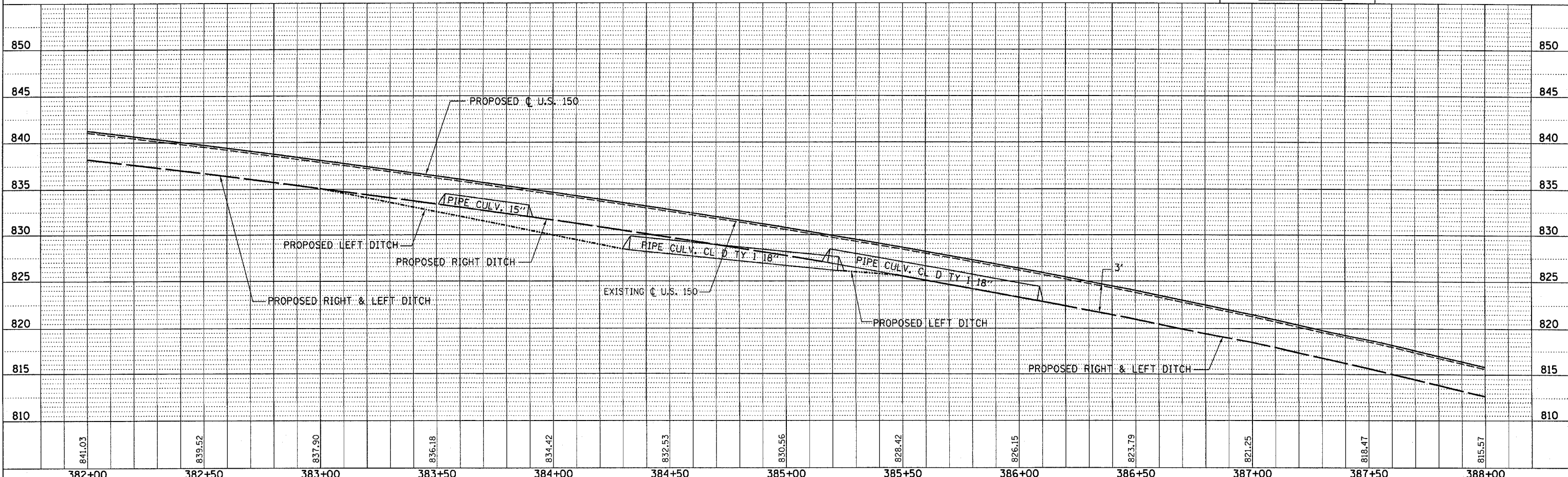


F.A.S. RTE.	SECTION	COUNTY	TOTAL SHEETS	SHEET NO.
1517	1N	MCLEAN	20	8
STA. 382+00		TO STA. 388+00		
FED. ROAD DIST. NO.		ILLINOIS FED. AID PROJECT		



DATE	
BY	
PLANNED	
DESIGNED	
CHECKED	
APPROVED	

DATE	
BY	
PROFILING	
DESIGNED	
CHECKED	
APPROVED	



STA. 382 + 00 TO STA. 388 + 00
PLAN & PROFILE