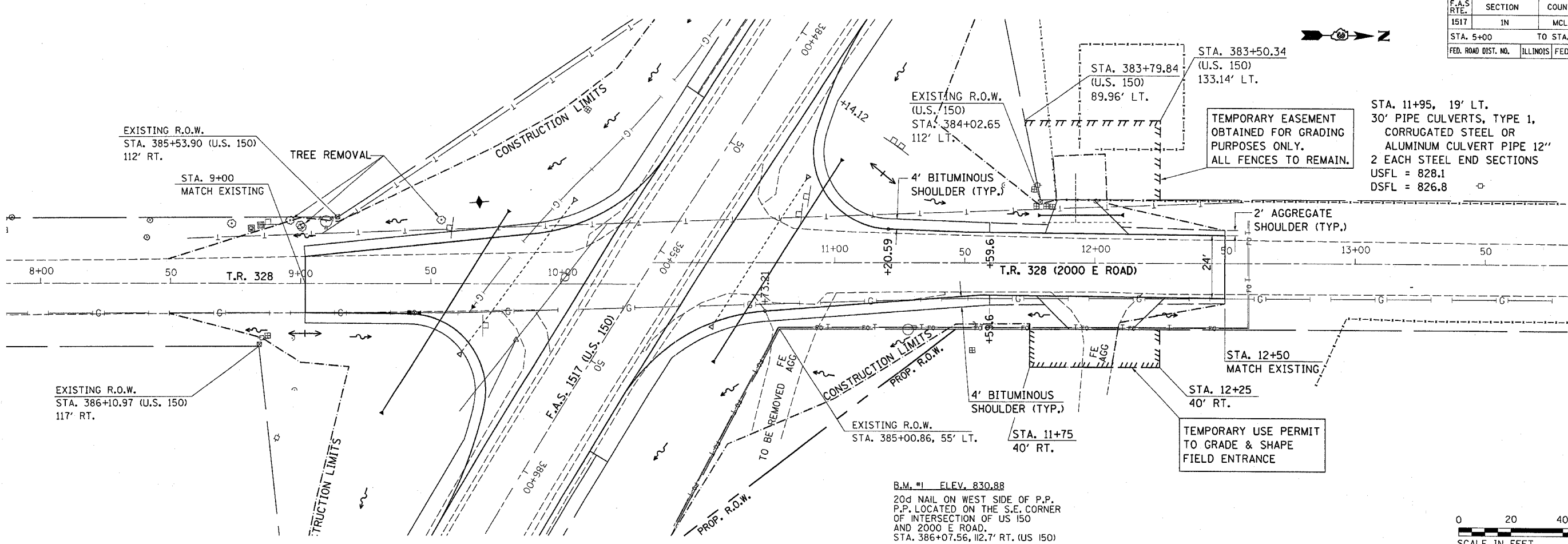
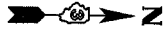
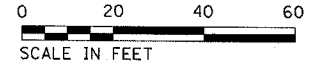


F.A.S. RTE.	SECTION	COUNTY	TOTAL SHEETS	SHEET NO.
1517	IN	MCLEAN	20	10
STA. 5+00 TO STA. 9+30				
FED. ROAD DIST. NO.	ILLINOIS	FED. AID PROJECT		



B.M. #1 ELEV. 830.88
 20d NAIL ON WEST SIDE OF P.P.
 P.P. LOCATED ON THE S.E. CORNER
 OF INTERSECTION OF US 150
 AND 2000 E ROAD.
 STA. 386+07.56, 112.7' RT. (US 150)

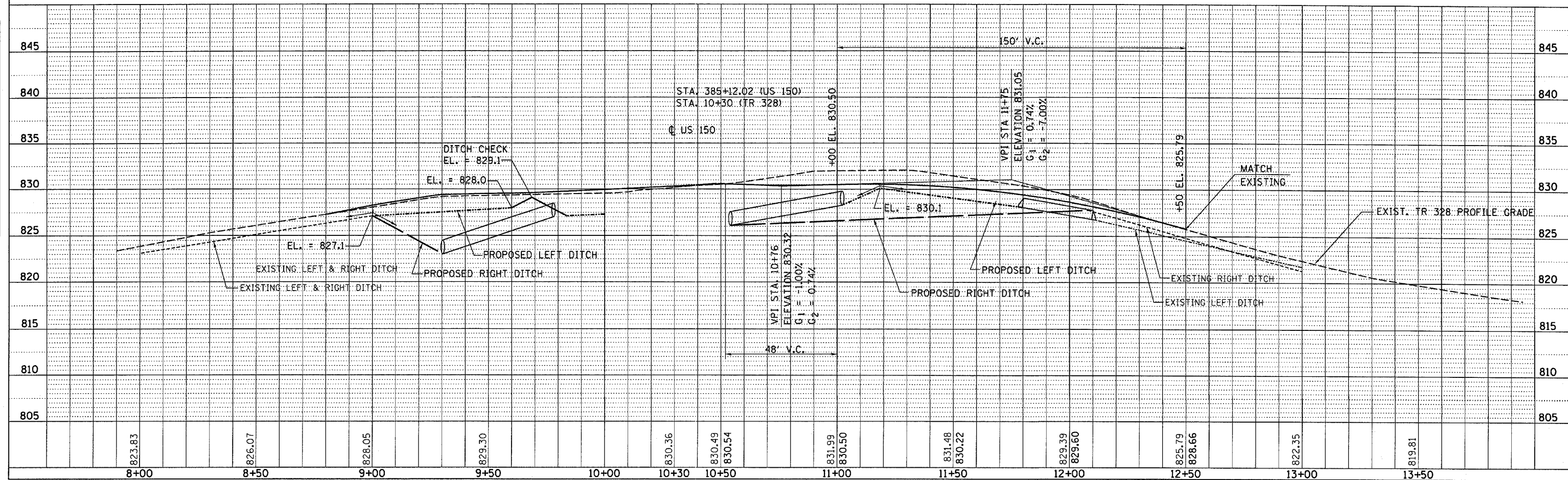


DATE	BY	REVISION

PLAN
 SURVEYED
 NOTE BOOK NO.
 ALIGNED CHECKED
 NO. OF PAGES
 STRUCTURE NOTATIONS
 NO.

DATE	BY	REVISION

PROFILE
 SURVEYED
 GRADES CHECKED
 NO. OF PAGES
 STRUCTURE NOTATIONS
 NO.



**STA. 8+00 TO STA. 13+50
 PLAN & PROFILE**