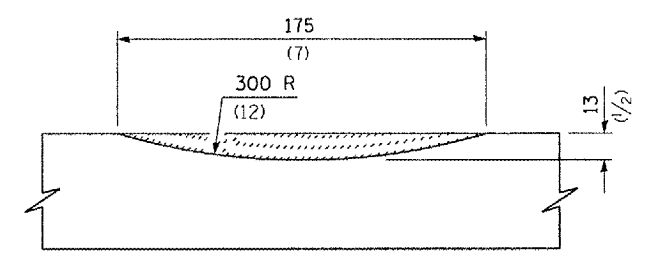
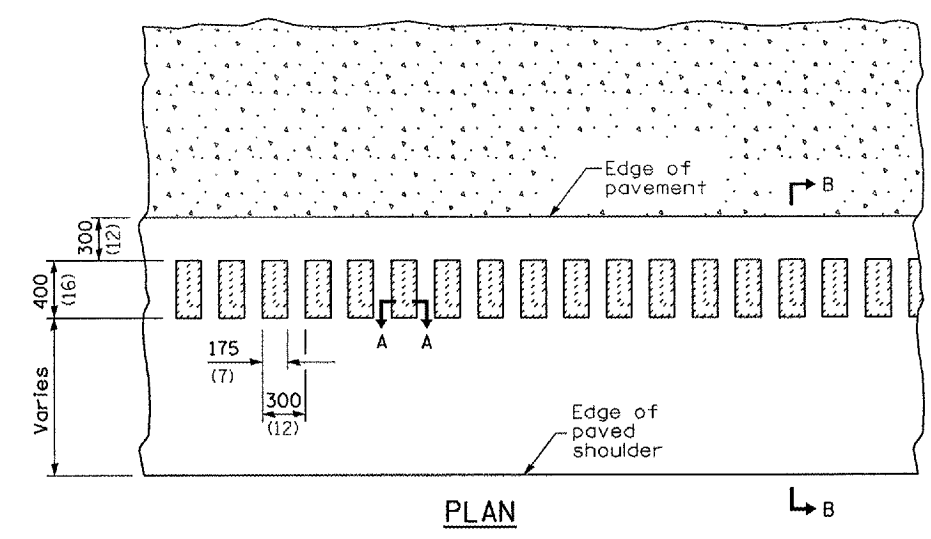
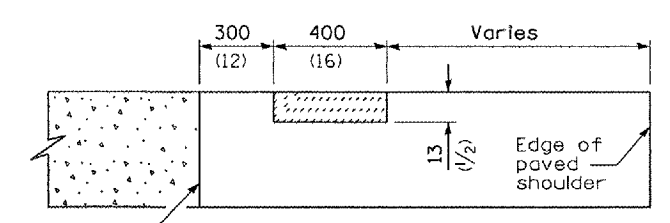


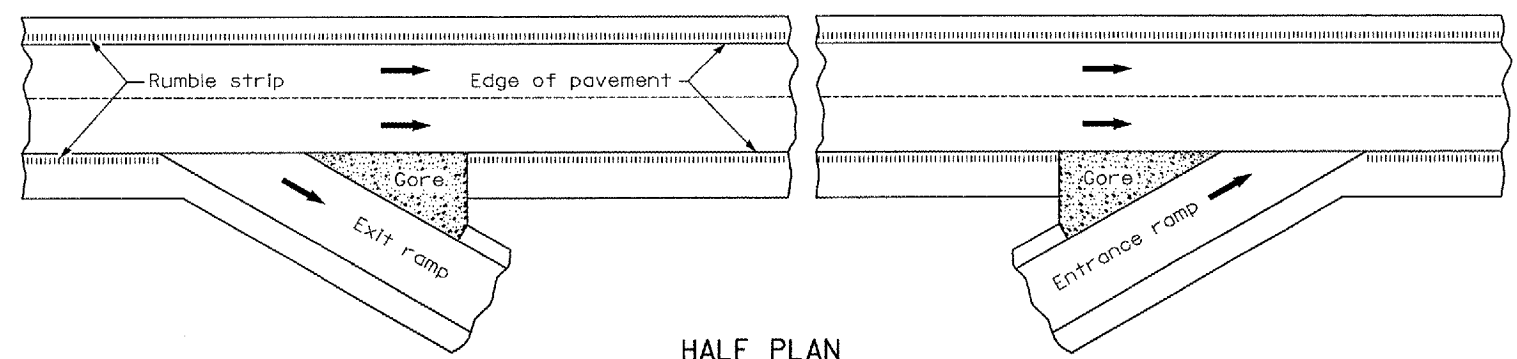
F.A.I. RTE.	SECTION	COUNTY	TOTAL SHEETS	SHEET NO.
55	(53-31)	LIVINGSTON	14	11
STA. 331+64		TO STA. 338+18		
FED. ROAD DIST. NO.		ILLINOIS		



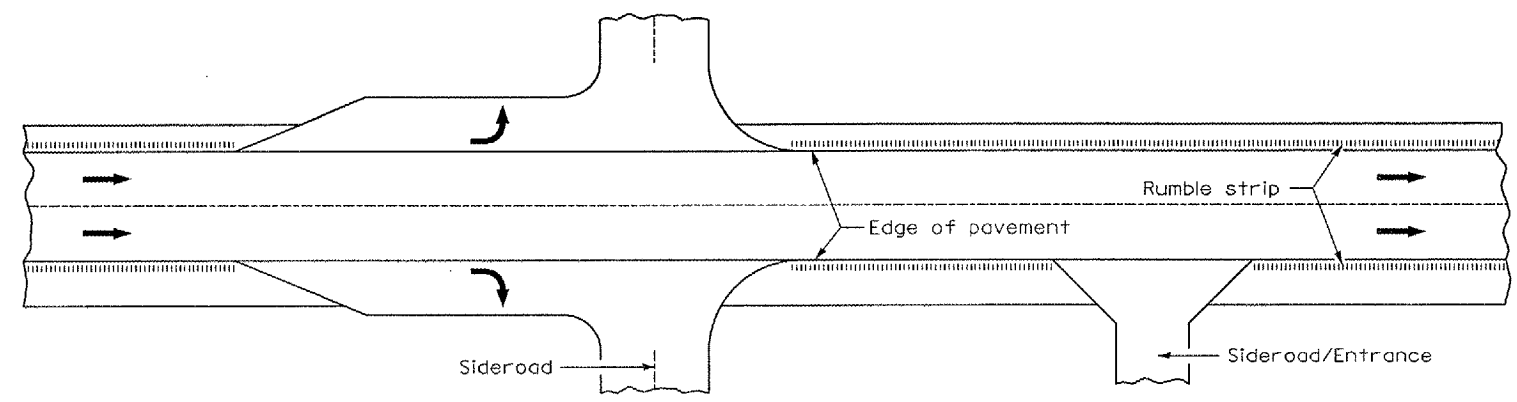
SECTION A-A



SECTION B-B



HALF PLAN
TYPICAL APPLICATION AT AN INTERCHANGE



HALF PLAN
TYPICAL APPLICATION EXPRESSWAY INTERSECTION

GENERAL NOTES

On Portland cement concrete shoulders, no shoulder rumble strip shall be located closer than 150 mm (6") of a traverse joint.

Omit shoulder rumble strips across structures.

REVISIONS	
NAME	DATE

ILLINOIS DEPARTMENT OF TRANSPORTATION

SHOULDER RUMBLE STRIP DETAIL

SCALE: VERT. DATE 09/21/04

DRAWN BY RW CHECKED BY

PLOT DATE = SEPTEMBER 21, 2004
FILE NAME = oman05/cn324/ds/soil.dgn