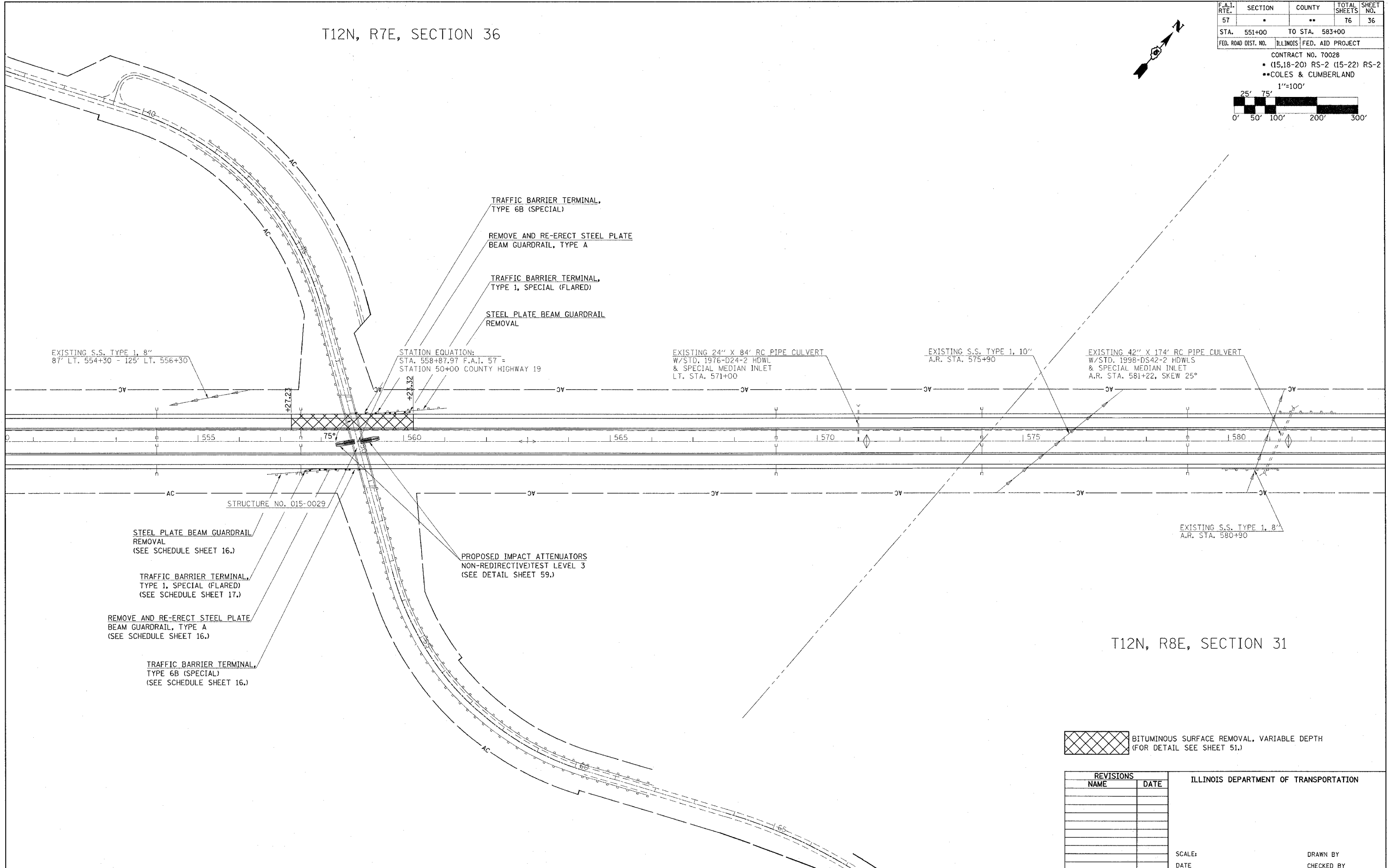



T12N, R7E, SECTION 36

F.A.I. RTE.	SECTION	COUNTY	TOTAL SHEETS	SHEET NO.
57	*	**	76	36
STA. 551+00		TO STA. 583+00		
FED. ROAD DIST. NO.		ILLINOIS	FED. AID PROJECT	
CONTRACT NO. 70028				
* (15,18-20) RS-2 (15-22) RS-2				
** COLES & CUMBERLAND				
1"=100'				
0' 50' 100' 200' 300'				



T12N, R8E, SECTION 31

 BITUMINOUS SURFACE REMOVAL, VARIABLE DEPTH (FOR DETAIL SEE SHEET 51.)

REVISIONS		ILLINOIS DEPARTMENT OF TRANSPORTATION
NAME	DATE	
		SCALE: DATE
DRAWN BY		CHECKED BY

**REVISED**  
2-22-05  
SHEET