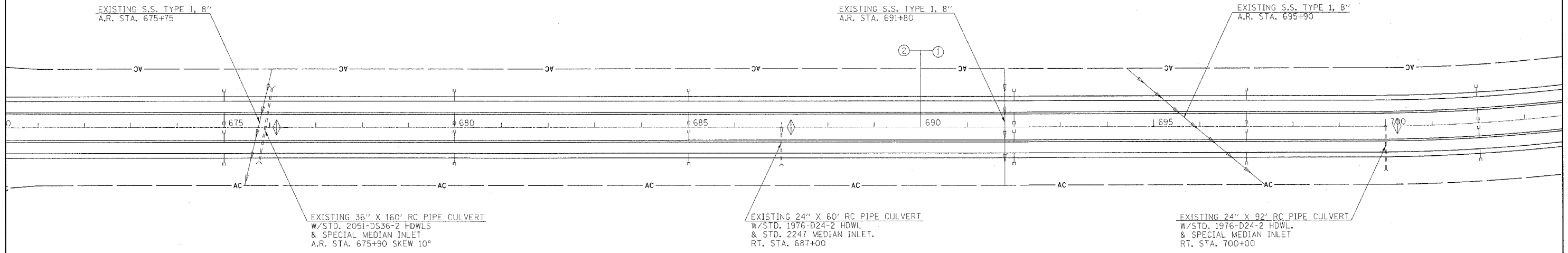
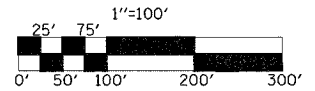
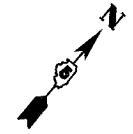


T12N, R8E, SECTION 29

F.A.I. RTE.	SECTION	COUNTY	TOTAL SHEETS	SHEET NO.
57	•	••	76	40
STA. 671+00	TO STA. 703+00			
FED. ROAD DIST. NO.	ILLINOIS	FED. AID PROJECT		
CONTRACT NO. 70028				
• (15,18-20) RS-2 (15-22) RS-2				
••COLES & CUMBERLAND				



EXISTING S.S. TYPE 1, 8"  
A.R. STA. 675+75

EXISTING S.S. TYPE 1, 8"  
A.R. STA. 691+80

EXISTING S.S. TYPE 1, 8"  
A.R. STA. 695+90

EXISTING 36" X 160' RC PIPE CULVERT  
W/STD. 2051-DS36-2 HDWLS  
& SPECIAL MEDIAN INLET  
A.R. STA. 675+90 SKEW 10°

EXISTING 24" X 60' RC PIPE CULVERT  
W/STD. 1976-D24-2 HDWL  
& STD. 2247 MEDIAN INLET.  
RT. STA. 687+00

EXISTING 24" X 92' RC PIPE CULVERT  
W/STD. 1976-D24-2 HDWL.  
& SPECIAL MEDIAN INLET  
RT. STA. 700+00

REVISIONS		ILLINOIS DEPARTMENT OF TRANSPORTATION
NAME	DATE	
		SCALE: DATE

REVISED  
2-22-05  
SHEET

DRAWN BY  
CHECKED BY