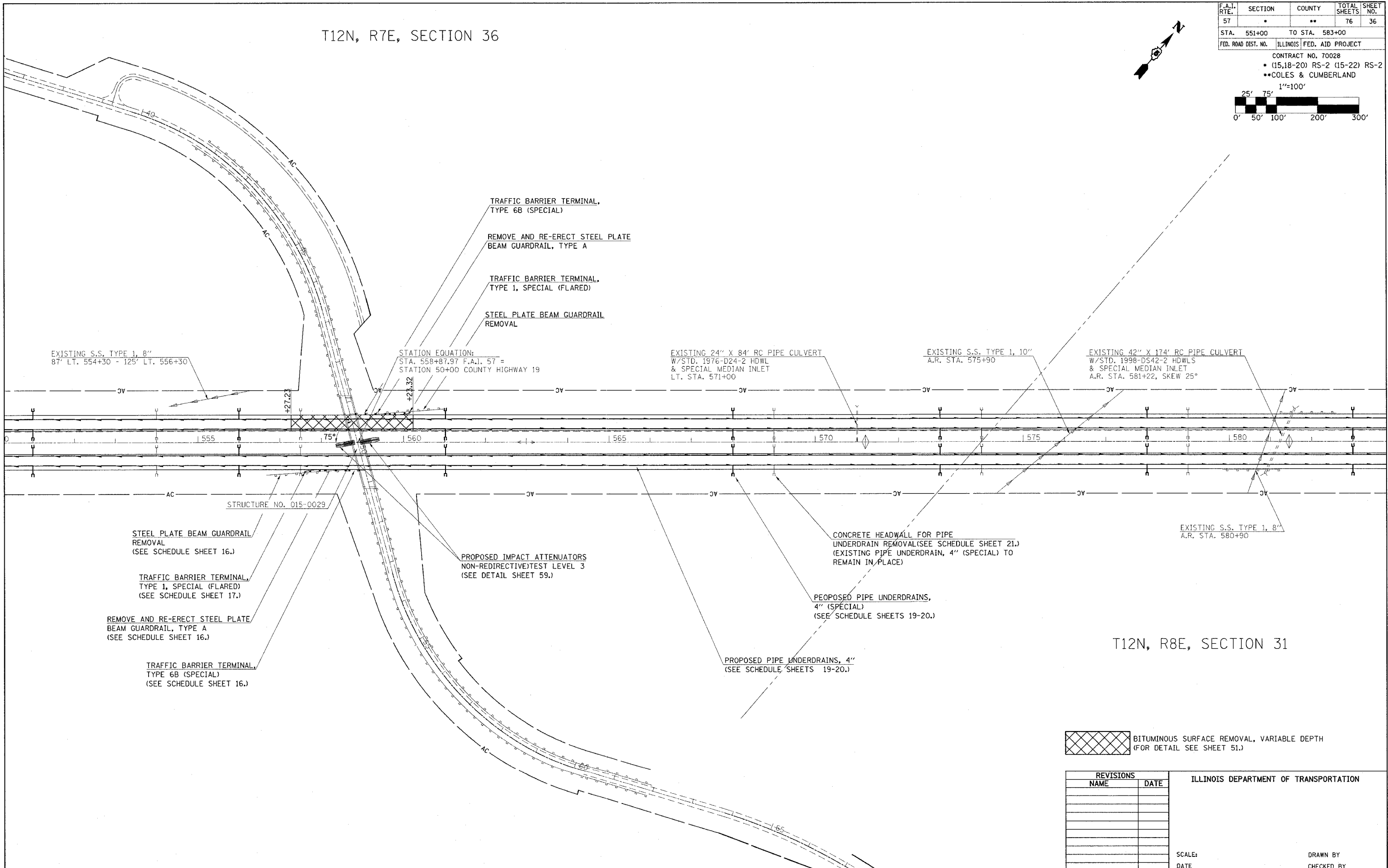


T12N, R7E, SECTION 36

F.A.I. RTE.	SECTION	COUNTY	TOTAL SHEETS	SHEET NO.
57			76	36
STA. 551+00	TO STA. 583+00			
FED. ROAD DIST. NO.	ILLINOIS FED. AID PROJECT			
CONTRACT NO. 70028				
• (15,18-20) RS-2 (15-22) RS-2				
•• COLES & CUMBERLAND				
1"=100'				
0' 50' 100' 200' 300'				



T12N, R8E, SECTION 31

BITUMINOUS SURFACE REMOVAL, VARIABLE DEPTH (FOR DETAIL SEE SHEET 51.)

REVISIONS	
NAME	DATE

ILLINOIS DEPARTMENT OF TRANSPORTATION

SCALE: \_\_\_\_\_

DATE \_\_\_\_\_

DRAWN BY \_\_\_\_\_

CHECKED BY \_\_\_\_\_