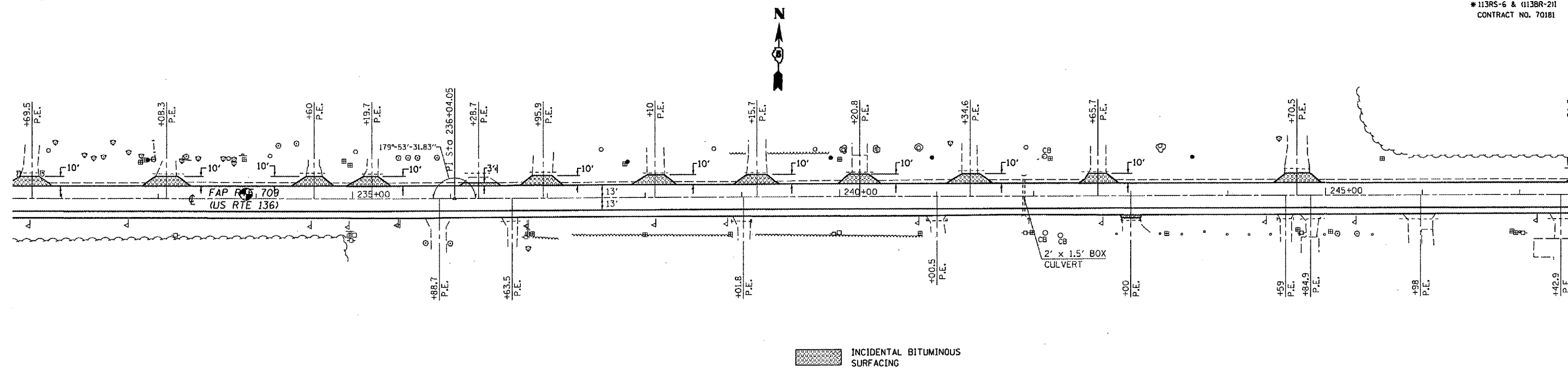
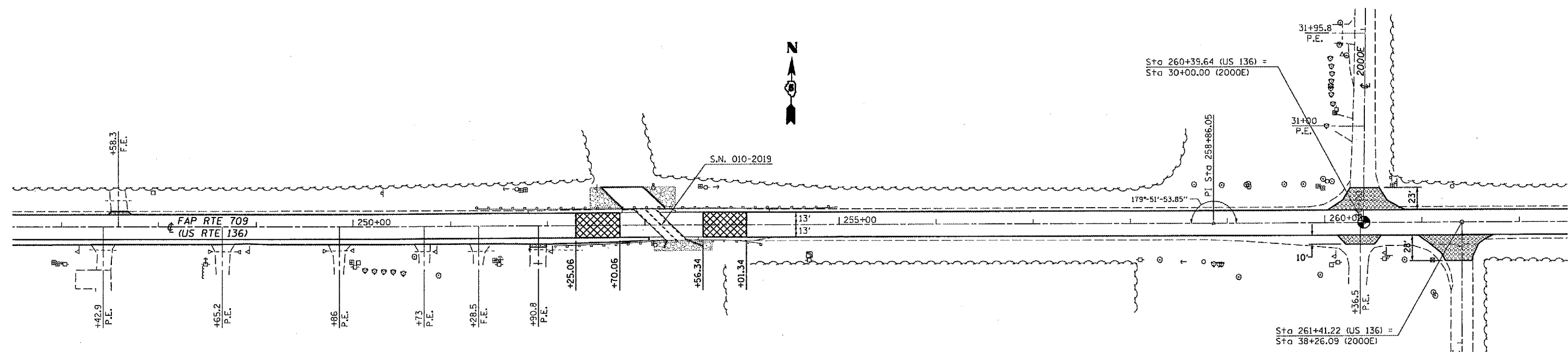


F.A.P. RTE.	SECTION	COUNTY	TOTAL SHEETS	SHEET NO.
709	*	CHAMPAIGN	64	33
STA. 232+00		TO STA. 262+00		
FED. ROAD DIST. NO.	ILLINOIS	FED. AID PROJECT		
* 113RS-6 & (113BR-2)I CONTRACT NO. 70181				

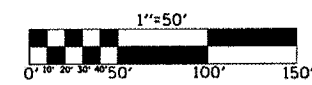


INCIDENTAL BITUMINOUS SURFACING



STRUCTURE OMISSION
STATION 252+70.06 TO STATION 253+56.34

INCIDENTAL BITUMINOUS SURFACING
BITUMINOUS SURFACE REMOVAL - BUTT JOINT



ILLINOIS DEPARTMENT OF TRANSPORTATION
PLAN VIEW
F.A.P. ROUTE 709 (US RTE 136)
SECTION 113RS-6 & (113BR-2)I
CHAMPAIGN COUNTY
SCALE: 1"=50'
DATE 08/23/04
DRAWN BY: CADD
CHECKED BY: