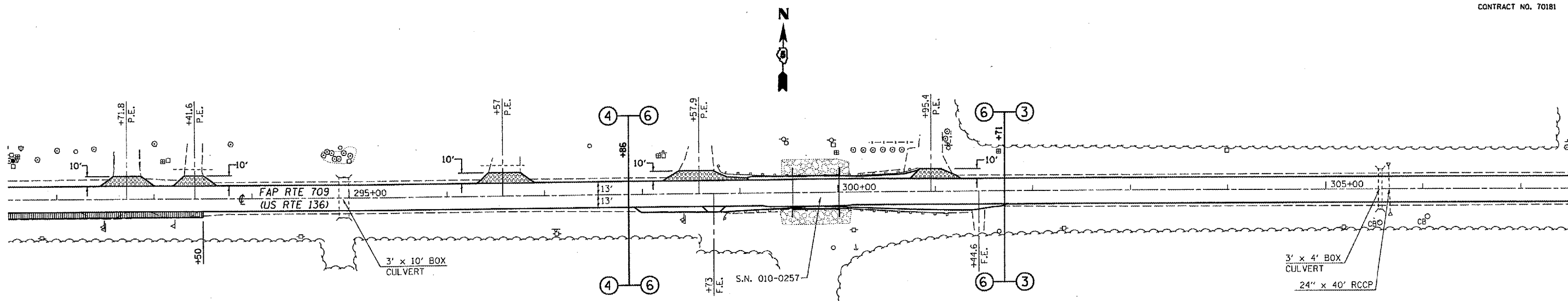


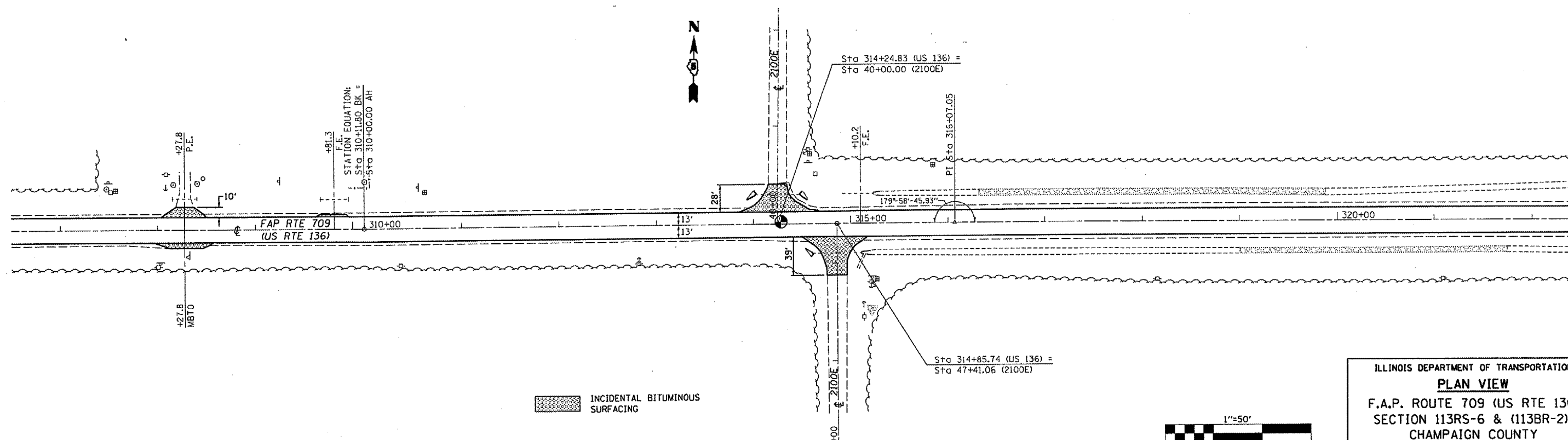
F.A.P. RTE.	SECTION	COUNTY	TOTAL SHEETS	SHEET NO.
709	*	CHAMPAIGN	64	35
STA. 292+00		TO STA. 322+00		
FED. ROAD DIST. NO.	ILLINOIS	FED. AID PROJECT		
* 113RS-6 & (113BR-2)I CONTRACT NO. 70181				



NOTE:
WHILE CONSTRUCTING BITUMINOUS SHOULDERS 6", NO OPEN HOLES OR DROP-OFFS SHALL BE LEFT AT THE END OF EACH WORK DAY.

- BITUMINOUS SHOULDERS SUPERPAVE 6"
- INCIDENTAL BITUMINOUS SURFACING

B-SMART S.N. 010-0257
STATION 299+49.50 TO STATION 299+98.50



- INCIDENTAL BITUMINOUS SURFACING

ILLINOIS DEPARTMENT OF TRANSPORTATION
PLAN VIEW
F.A.P. ROUTE 709 (US RTE 136)
SECTION 113RS-6 & (113BR-2)I
CHAMPAIGN COUNTY

SCALE: 1"=50'
DATE 08/23/04

DRAWN BY: CADD
CHECKED BY: