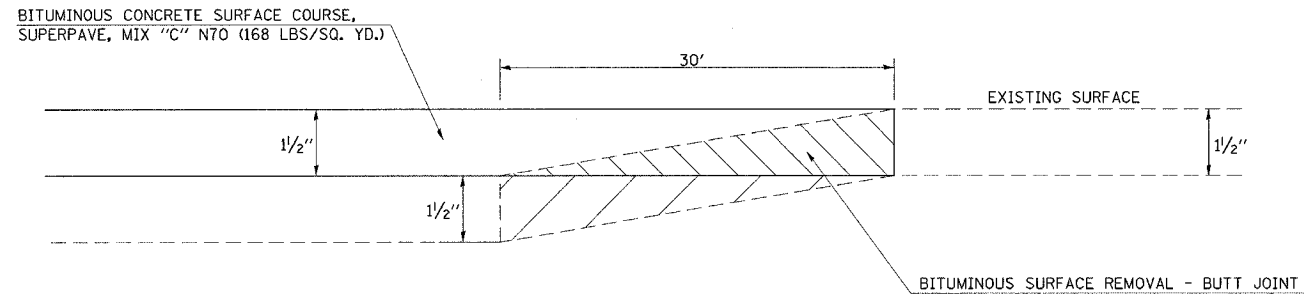


F.A.P. RTE.	SECTION	COUNTY	TOTAL SHEETS	SHEET NO.
323	(139,140)RS-3		18	13

MACON, MOULTRIE & PIATT
CONTRACT NO. 70394

BUTT JOINT RUNDOWN DETAIL

(EAST END OF JOB)



BITUMINOUS SURFACE REMOVAL - BUTT JOINT - 40600980

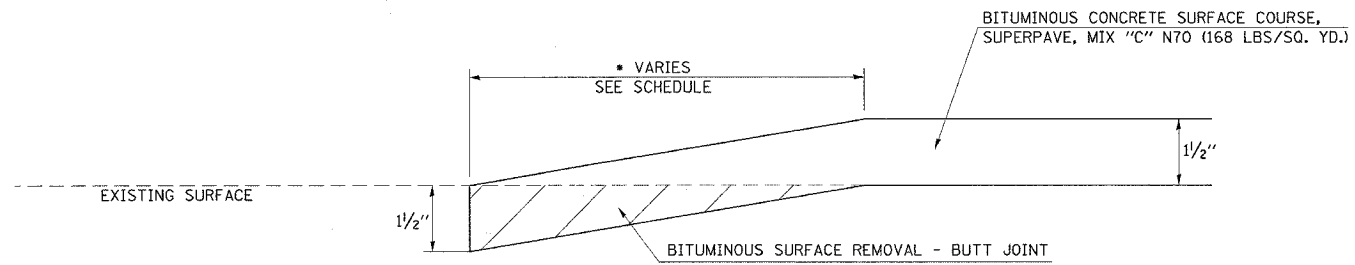
STATION	TO	STATION	LENGTH (FT.)	WIDTH (FT.)	QUANTITY (SQ. YD.)
62+08.20		62+38.20	30.00	24.00	80.00
TOTAL =					80.00

TEMPORARY RAMP - 40600990

STATION	TO	STATION	LENGTH (FT.)	WIDTH (FT.)	QUANTITY (SQ. YD.)
62+08.20		62+13.20	5.00	36.00	20.00
TOTAL =					20.00

BUTT JOINT RUNDOWN DETAIL

(WEST END OF JOB)



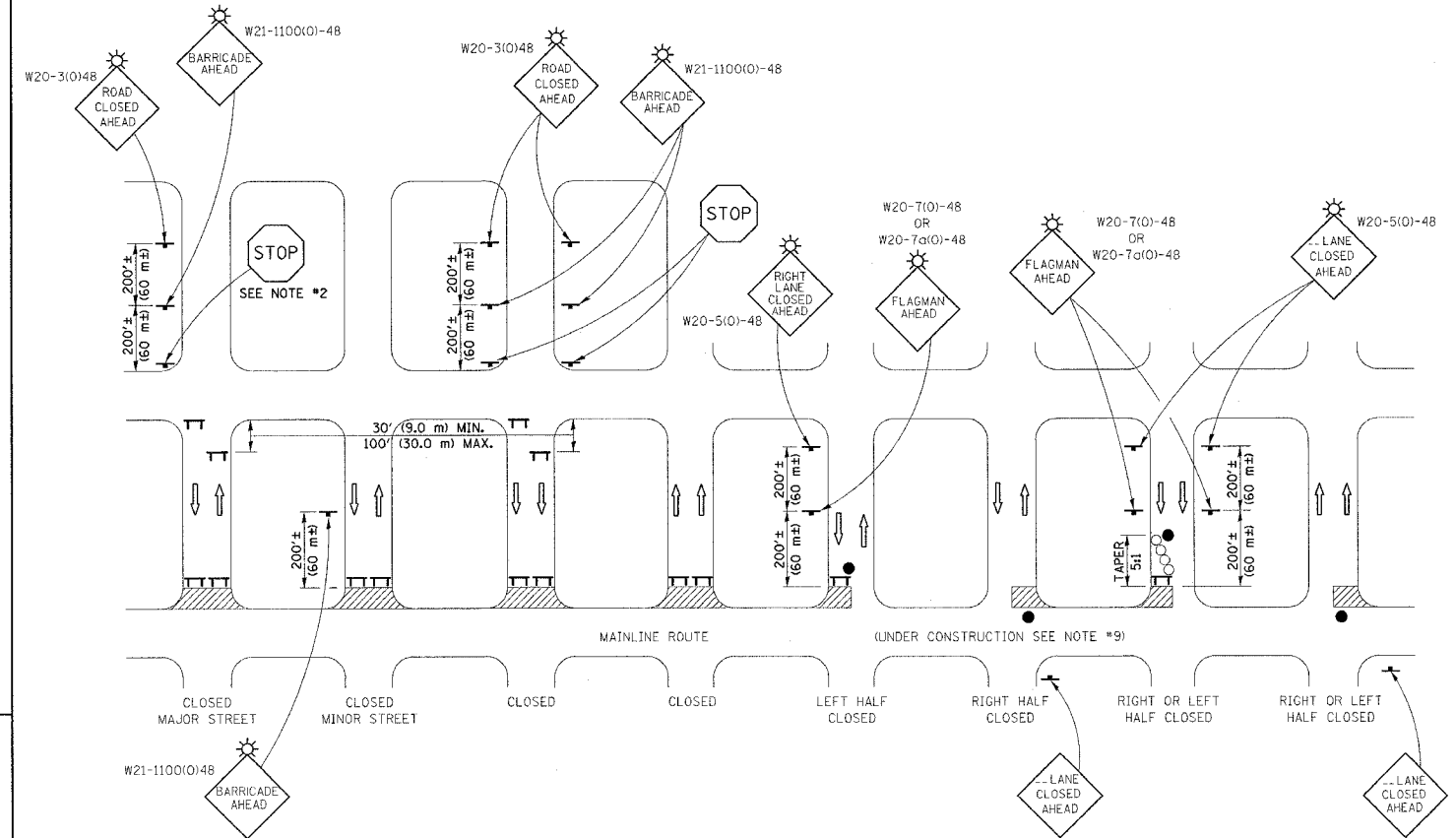
BITUMINOUS SURFACE REMOVAL - BUTT JOINT - 40600980

STATION	TO	STATION	LENGTH (FT.)	WIDTH (FT.)	QUANTITY (SQ. YD.)
125+45.00		126+00.00	55.00	33.00	201.67
186+77.64		187+07.64	30.00	29.00	96.67
187+79.46		188+09.46	30.00	29.00	96.67
236+82.97		237+12.97	30.00	29.00	96.67
237+84.73		238+14.73	30.00	29.00	96.67
339+93.09		340+23.09	30.00	29.00	96.67
340+90.90		341+20.90	30.00	29.00	96.67
TOTAL =					781.67

TEMPORARY RAMP - 40600990

STATION	TO	STATION	LENGTH (FT.)	WIDTH (FT.)	QUANTITY (SQ. FT.)
125+45.00		125+50.00	5.00	33.00	18.33
187+02.64		187+07.64	5.00	29.00	16.11
187+79.46		187+84.46	5.00	29.00	16.11
237+07.97		237+12.97	5.00	29.00	16.11
237+84.73		237+89.73	5.00	29.00	16.11
340+18.09		340+23.09	5.00	29.00	16.11
340+90.91		340+95.91	5.00	29.00	16.11
TOTAL =					115.00

TYPICAL APPLICATION OF TRAFFIC CONTROL DEVICES FOR SIDE STREET CLOSURE



GENERAL NOTES

- TYPE III BARRICADES SHALL BE AS SHOWN ON "TYPICAL APPLICATIONS OF TYPE III BARRICADES CLOSING A ROAD". EACH TYPE III BARRICADE SHALL HAVE TWO FLASHING AMBER LIGHTS MOUNTED ABOVE IT.
- WHERE A STOP CONDITION EXISTS, AS SHOWN ABOVE, WARNING SIGNS MAY BE OMITTED IN ADVANCE OF THE "STOP" SIGN.
- STANDARD 702001 SHALL APPLY FOR THE PLACEMENT & MANUFACTURE OF TYPE III BARRICADES.
- ALL SIGNS SHALL BE POST MOUNTED IF THE CLOSURE TIME EXCEEDS FOUR DAYS.
- ONE FLASHING LIGHT IS REQUIRED ABOVE EACH ADVANCE WARNING SIGN DURING HOURS OF DARKNESS.
- LONGITUDINAL DIMENSIONS MAY BE ADJUSTED SLIGHTLY TO FIT FIELD CONDITIONS.
- FORMS BT 725 AND BT 726 ARE REQUIRED.
- THE MAINLINE ROUTE TEMPORARY TRAFFIC CONTROL SHALL BE IN ACCORDANCE WITH THE PLANS, SPECIAL PROVISIONS AND STANDARD SPECIFICATIONS.
- THIS WORK WILL NOT BE PAID FOR SEPARATELY BUT SHALL BE CONSIDERED INCLUDED IN THE VARIOUS PAY ITEMS INVOLVING THE RECONSTRUCTION OF ALL APPLICABLE SIDE STREETS AND NO ADDITIONAL COMPENSATION WILL BE ALLOWED.

SYMBOLS

- TT TYPE III BARRICADE (SEE NOTE)
- ⚡ FLASHING LIGHT
- FLAGGER WITH TRAFFIC CONTROL SIGN (WHILE WORK IS BEING PERFORMED)
- CONE (DAYLIGHT HOURS ONLY), DRUM, TYPE I OR TYPE II BARRICADE
- ▨ WORK AREA
- ↔ TRAFFIC FLOW

	NAME	DATE	REVISIONS	DATE
DESIGNED	J.H.M.	8-11-87		
CHECKED	P.E.K.	8-25-87	R.M.H.	12/97
CADD NO.	F-5.04		K.A.G.	08/03

ALL DIMENSIONS ARE IN INCHES (MILLIMETERS) UNLESS OTHERWISE SHOWN.