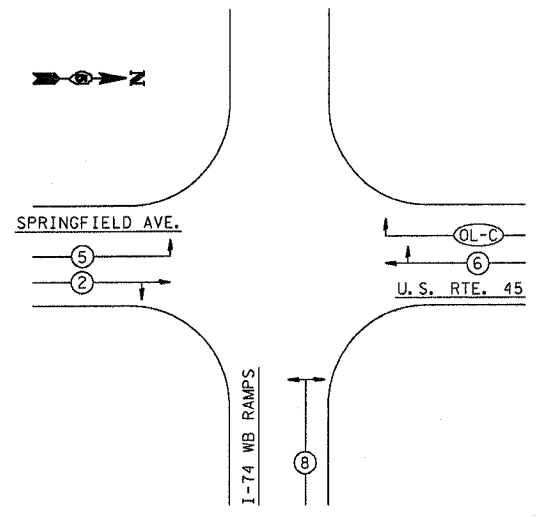


PHASE DESIGNATION DIAGRAM



B I L L O F M A T E R I A L S  
U. S. R O U T E 4 5 & I - 7 4 W E S T B O U N D R A M P S

ITEM	UNIT	QUANTITY
CONDUIT IN TRENCH, 2" DIA., PVC	FOOT	5
CONDUIT IN TRENCH, 4" DIA., PVC	FOOT	31
CONDUIT, AUGERED 4" DIA., PVC	FOOT	91
TRENCH AND BACKFILL FOR ELECTRICAL WORK	FOOT	5
CONTROLLER CABINET TYPE IV	EACH	1
ELECTRIC CABLE IN CONDUIT, SIGNAL NO. 14 3C	FOOT	504
ELECTRIC CABLE IN CONDUIT, SIGNAL NO. 14 5C	FOOT	2064
ELECTRIC CABLE IN CONDUIT, SIGNAL NO. 14 7C	FOOT	303
ELECTRIC CABLE IN CONDUIT, LEAD-IN, NO. 18 3 PAIR	FOOT	3023
TRAFFIC SIGNAL POST, ALUMINUM 12 FT.	EACH	4
TRAFFIC SIGNAL POST, ALUMINUM 14 FT.	EACH	2
CONCRETE FOUNDATION, TYPE A	FOOT	3.1
DRILL EXISTING HANDHOLE	EACH	2
TRAFFIC SIGNAL BACKPLATE, LOUVERED	EACH	4
INDUCTIVE LOOP DETECTOR	EACH	16
DETECTOR LOOP, TYPE I	FOOT	1030
RELOCATE EXISTING TRAFFIC SIGNAL EQUIPMENT	EACH	1
REMOVE ELECTRIC CABLE FROM CONDUIT	FOOT	7982
REMOVE EXISTING TRAFFIC SIGNAL EQUIPMENT	EACH	1
REMOVE EXISTING HANDHOLE	EACH	1
REMOVE EXISTING CONCRETE FOUNDATION	EACH	2
SIGNAL HEAD, POLYCARBONATE, LED, 1-FACE, 3-SECTION, BRACKET MOUNTED	EACH	4
SIGNAL HEAD, POLYCARBONATE, LED, 1-FACE, 3-SECTION, MAST ARM MOUNTED	EACH	4
SIGNAL HEAD, POLYCARBONATE, LED, 2-FACE, 3-SECTION, BRACKET MOUNTED	EACH	1
SIGNAL HEAD, POLYCARBONATE, LED, 2-FACE, 1-3 SECTION, 1-5 SECTION, BRACKET MOUNTED	EACH	2
ELECTRIC CABLE IN CONDUIT NO. 20 3/C	FOOT	504

ITEMS TO BE RETURNED TO THE CITY OF URBANA

ITEM	QUANTITY
CONTROLLER CABINET	1 EA.
ALUMINUM SIGNAL POSTS & BASES	2 EA.
L.E.D. MODULES (LEFT TURN ARROW)	2 EA.

GENERAL NOTES

1. THE FOLLOWING SIGNAL HEADS SHALL BE WIRED IN PARALLEL AT THE MAST POLE HANDHOLE: (A2, A3), (B2, B3).
2. THE ACTUAL LOCATION OF ALL SIGNAL FOUNDATIONS, HANDHOLES, AND TRAFFIC CONTROLLER WILL BE DETERMINED IN THE FIELD BY THE ENGINEER.
3. POST MOUNTED SIGNALS SHALL BE INSTALLED SO THAT NO PART OF THE SIGNAL HEAD IS WITHIN 2 FT. OF THE FACE OF CURB.
4. ALIGN ADJACENT RED INDICATIONS TO SAME HEIGHT ABOVE PAVEMENT.
5. THE BASE FOR A TRAFFIC SIGNAL POST SHALL BE SITUATED SUCH THAT THE HANDHOLE IS LOCATED ON A SIDE AWAY FROM A TRAVELED LANE.
6. THE ANTI-BACKUP FEATURE SHALL BE DISABLED.