

steffenmk
12/3/2004
c:\projects\74047\d02804pa.dgn

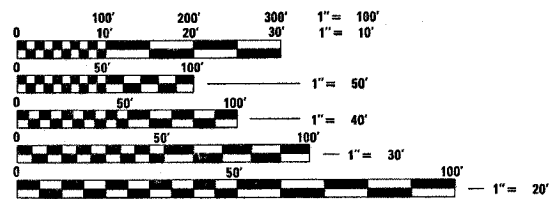


PROJECT ENGINEER : MARK DAUGHERTY
SQUAD LEADER : KRISTI SANDSCHAFFER
DESIGNER : KRISTI SANDSCHAFFER
TELEPHONE : 217/342-3951 EX 313

SEE SHEET 2 FOR INDEX OF SHEETS.

STATION EQUATION
STA 657+93.20 BK = STA 37+75.90 AH

ADT (2003) = 4950



FULL SIZE PLANS HAVE BEEN PREPARED USING STANDARD ENGINEERING SCALES, REDUCED SIZED PLANS WILL NOT CONFORM TO STANDARD SCALES, IN MAKING MEASUREMENTS ON REDUCED PLANS, THE ABOVE SCALES MAY BE USED.

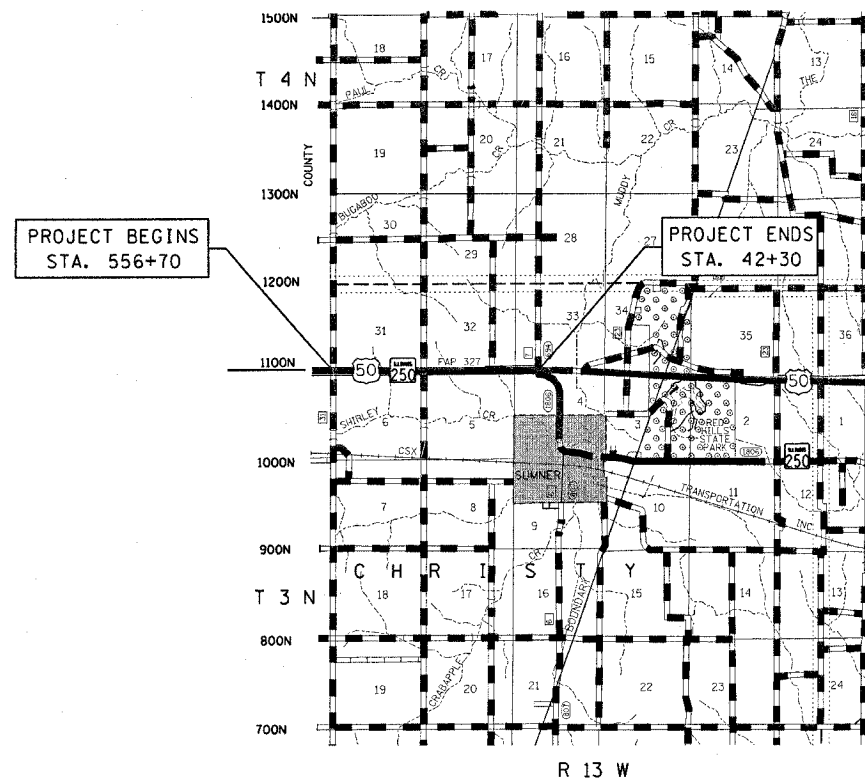
J.U.L.I.E.
JOINT UTILITY LOCATION INFORMATION FOR EXCAVATION
1-800-892-0123

CONTRACT NO. 74047

TOWNSHIP : CHRISTY

STATE OF ILLINOIS
DEPARTMENT OF TRANSPORTATION
DIVISION OF HIGHWAYS
**PLANS FOR PROPOSED
FEDERAL HIGHWAY PROJECT**
FAP ROUTE 327 (US 50)
PROJECT NO- NHF-0327(033)
SECTION (4-2)RS-3
LAWRENCE COUNTY
BITUMINOUS RESURFACING

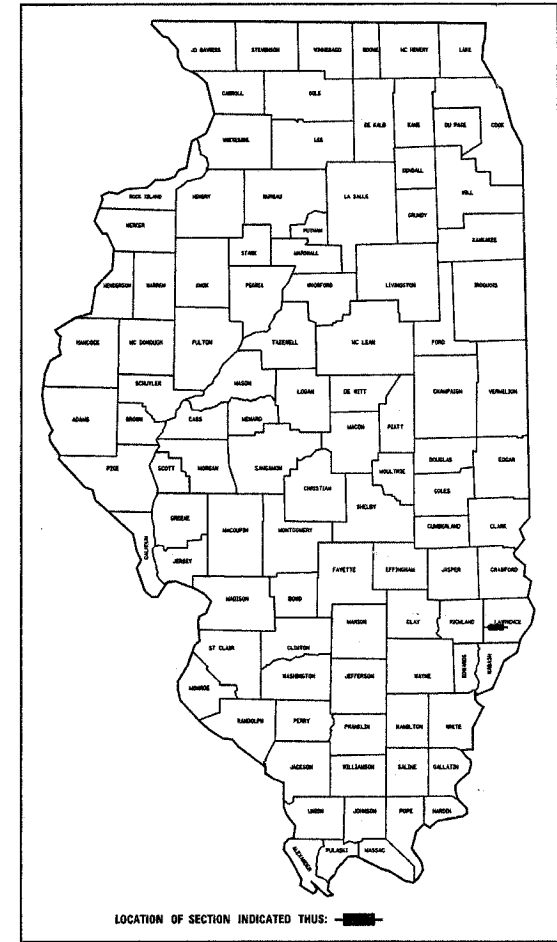
C-97-065-04



GROSS LENGTH = 10,577.3 FEET = 2.00 MILES
NET LENGTH = 10,577.3 FEET = 2.00 MILES

FAP NO.	SECTION	COUNTY	TOTAL SHEETS	SHEET NO.
327	(4-2)RS-3	LAWRENCE	12	1
FED. ROAD DIST. NO. 1		BLDG'S	FED. AID PROJECT NO. 74047	

D-97-028-04



LOCATION OF SECTION INDICATED THUS: [Symbol]

STATE OF ILLINOIS
DEPARTMENT OF TRANSPORTATION
DIVISION OF HIGHWAYS

SUBMITTED Dec 17 20 04
Christ H. Reed
DISTRICT ENGINEER

20
ENGINEER OF PROJECT DEVELOPMENT AND IMPLEMENTATION

February 4, 20 05
Mike Hine
ENGINEER OF DESIGN AND ENVIRONMENT

February 4, 20 05
Victor M. Reed
DIRECTOR, DIVISION OF HIGHWAYS

PRINTED BY THE AUTHORITY OF
THE STATE OF ILLINOIS

SEAL