

STATE OF ILLINOIS
 DEPARTMENT OF TRANSPORTATION
 DIVISION OF HIGHWAYS

PLANS FOR PROPOSED
 FEDERAL HIGHWAY PROJECT

FAP ROUTE 877 (IL 141)

D-7 BIT RESURF 2005-5
 BITUMINOUS RESURFACING
 WHITE COUNTY

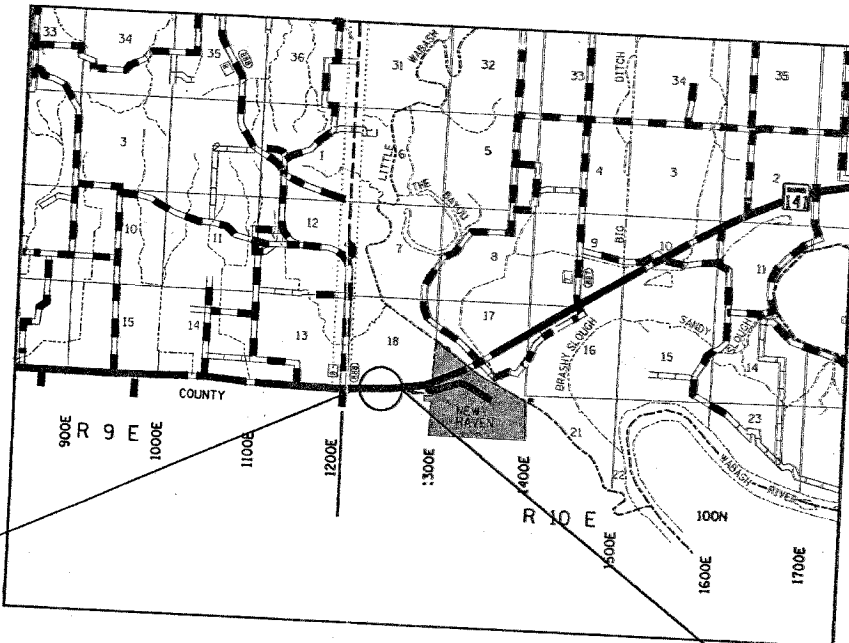
C-97-005-05

FOR INDEX OF SHEETS, SEE SHEET NO. 2

STATION EQUATION
 STA. 459+81.72 BK = STA. 0+00.00 AH

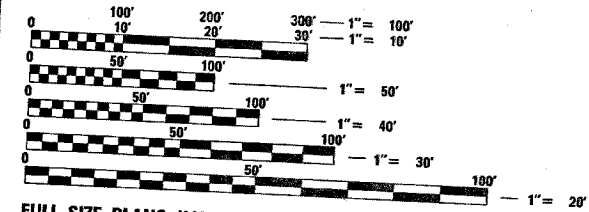
F.A.P. RTE.	SECTION	COUNTY	TOTAL SHEETS	SHEET NO.
877		WHITE	6	1

CONTRACT NO. 74079
 D-7 BIT. RESURF. 2005-5



PROJECT BEGINS
 STA. 446+19

PROJECT ENDS
 STA. 459+82



FULL SIZE PLANS HAVE BEEN PREPARED USING STANDARD ENGINEERING SCALES. REDUCED SIZED PLANS WILL NOT CONFORM TO STANDARD SCALES. IN MAKING MEASUREMENTS ON REDUCED PLANS, THE ABOVE SCALES MAY BE USED.

J.U.L.I.E.
 JOINT UTILITY LOCATION INFORMATION FOR EXCAVATION
 1-800-892-0123

ADT (2001) - 3250

GROSS LENGTH = 1363
 NET LENGTH = 1363
 FEET = 0.26 MILES
 FEET = 0.26 MILES

STATE OF ILLINOIS
 DEPARTMENT OF TRANSPORTATION
 DIVISION OF HIGHWAYS

SUBMITTED Dec 20 20 04
Christ H. Reed
 DEPUTY DIRECTOR OF HIGHWAYS, REGION 4 ENGINEER

February 4, 20 05
Mike [Signature]
 ENGINEER OF DESIGN AND ENVIRONMENT

February 4, 20 05
Victor [Signature]
 DIRECTOR OF HIGHWAYS, CHIEF ENGINEER

PRINTED BY THE AUTHORITY
 OF THE STATE OF ILLINOIS

CONTRACT NO. 74079 TOWNSHIP : EMMA

DESIGNER : BRIAN LEWIS
 TELEPHONE : 217/342-3951 EX 341