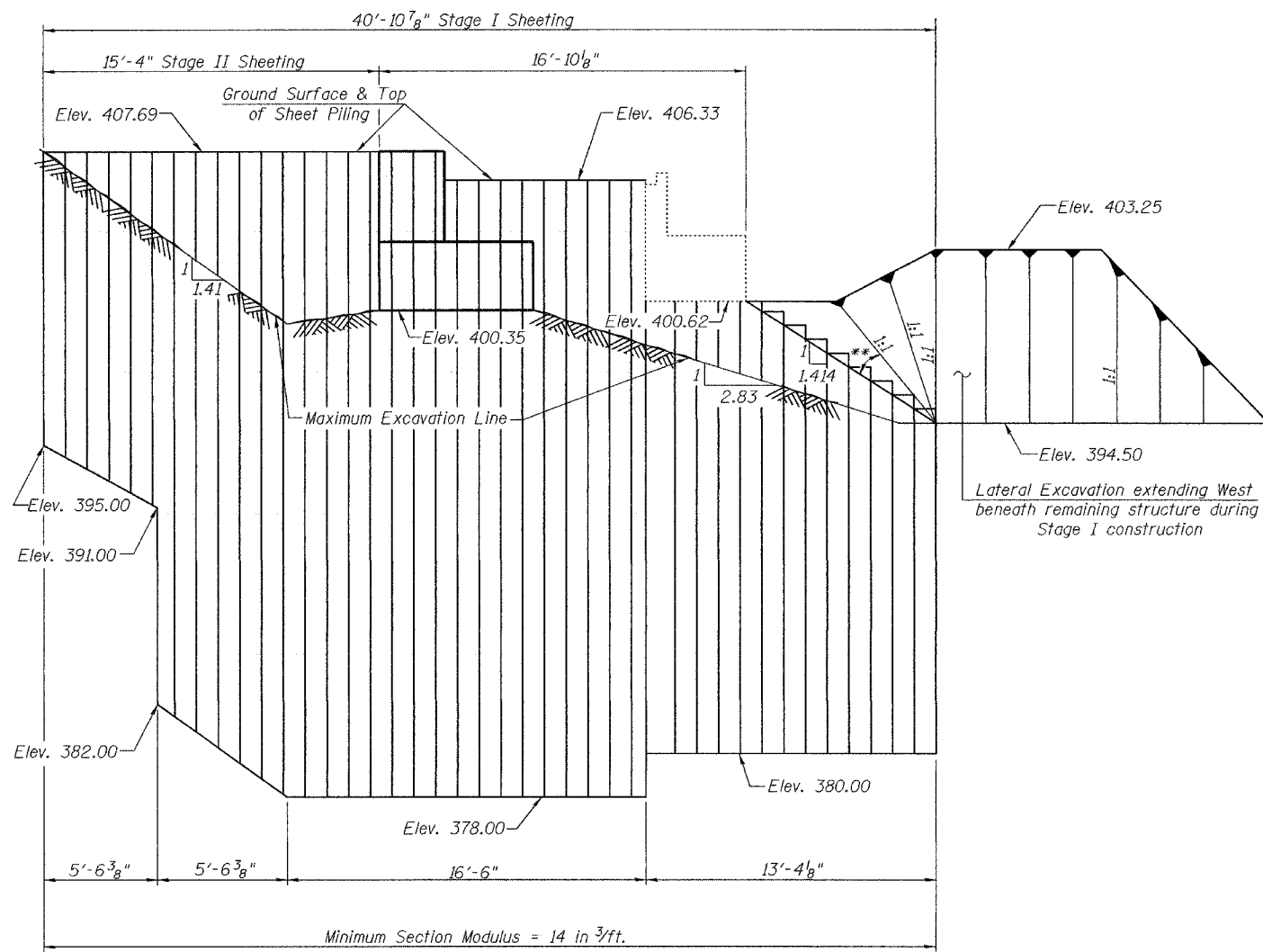


STATE OF ILLINOIS
DEPARTMENT OF TRANSPORTATION

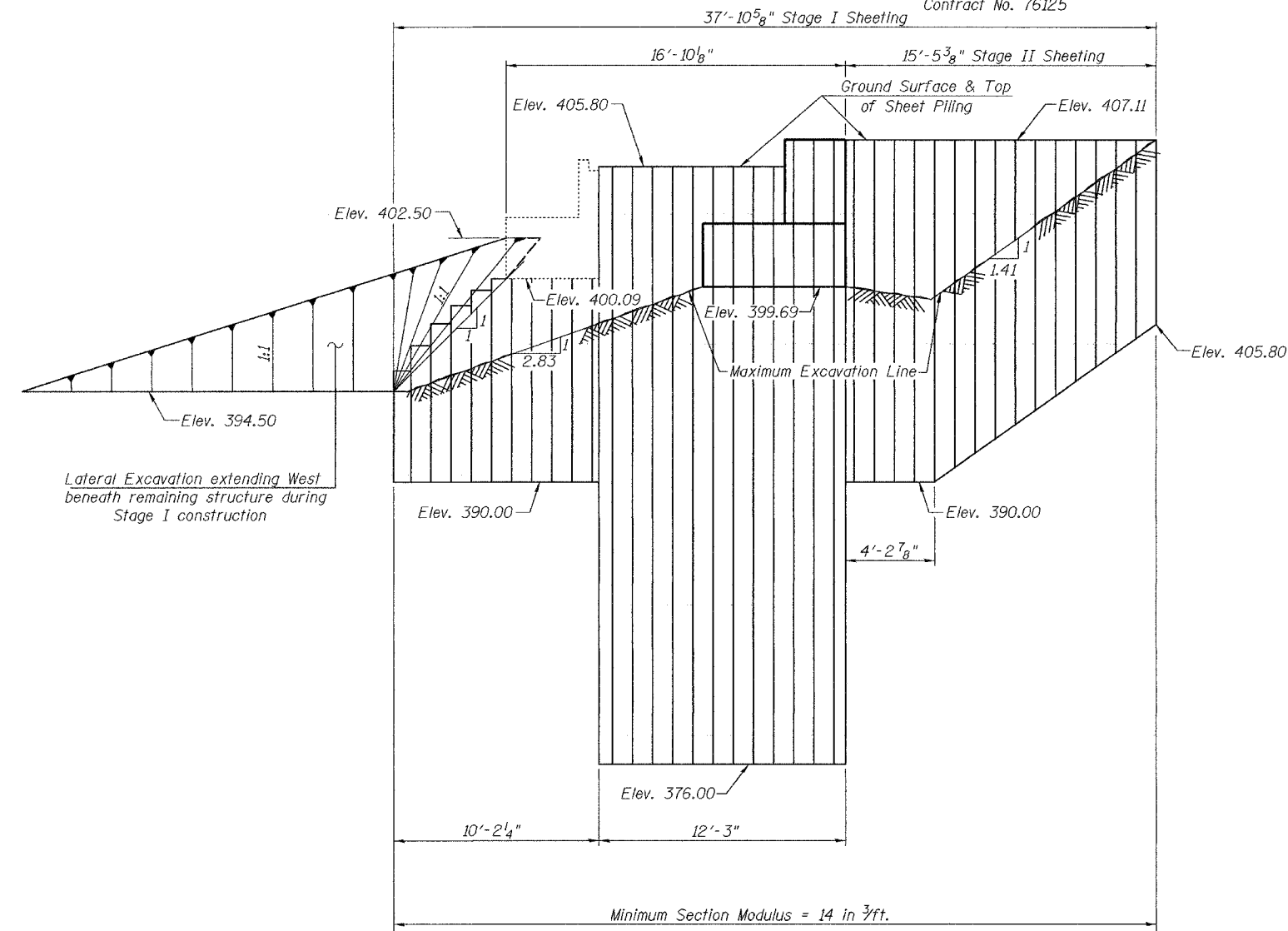
ROUTE NO. F.A.P. 312	SECTION 71BR	COUNTY RANDOLPH	SHEET NO. 27	SHEET 27
FED. ROAD DIST. NO. 7		ILLINOIS FED. AID PROJECT		

SHEET NO. 3
31 SHEETS

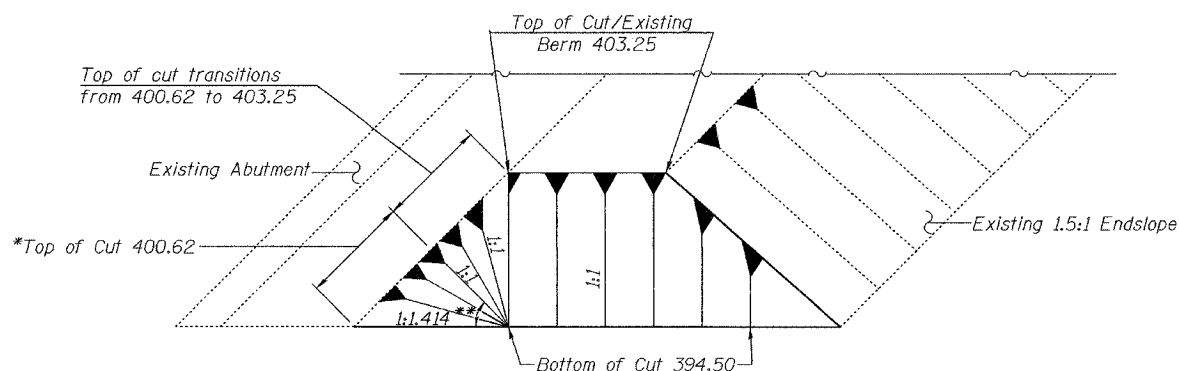
Contract No. 76125



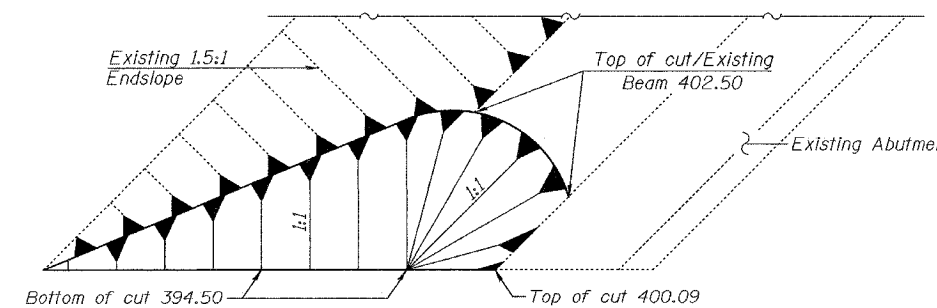
SOUTH ABUTMENT



NORTH ABUTMENT



SOUTH ABUTMENT



NORTH ABUTMENT

DESIGNED	J.E. Kramer
CHECKED	T.L. Kurtenbach
DRAWN	A.M. Selber
CHECKED	JEK/TLK

EXAMINED	January 26, 2005
PASSED	Thomas J. Domagala ENGINEER OF BRIDGE DESIGN
	Ralph E. Anderson ENGINEER OF BRIDGES AND STRUCTURES

*Note that top of cut will remain at 400.62 (Bottom Existing Abutment) half of the distance from Stage Line to where the cut intercepts the top of existing berm. If transitions from 400.62 to 403.25 thereafter.
**Transitions from 1:1.41 to 1:1.

TEMPORARY SHEET PILING
F.A.P. RT. 312 - SEC. 71BR
RANDOLPH COUNTY
STATION 1128+90
STRUCTURE NO. 079-0048