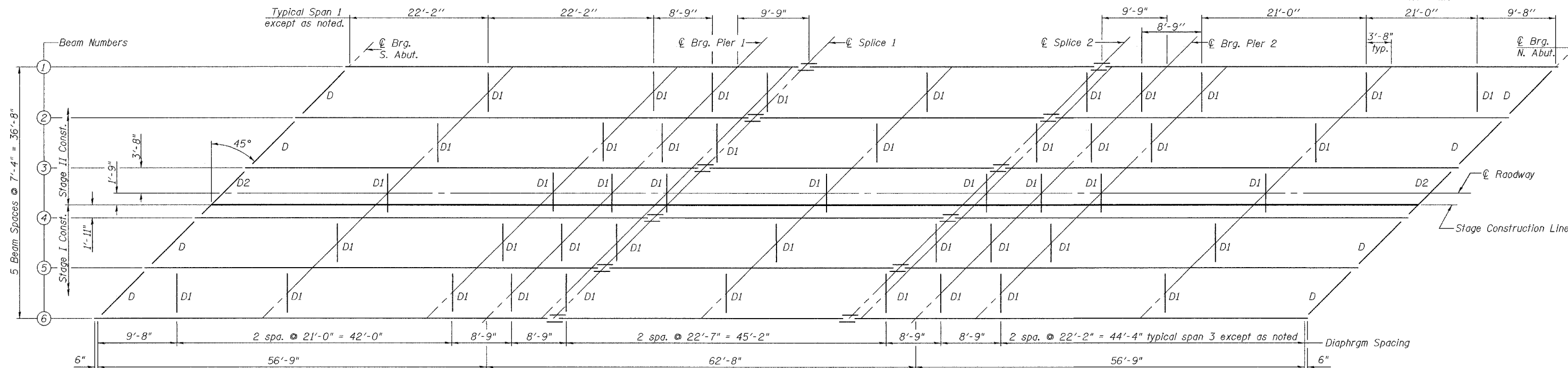


STATE OF ILLINOIS
DEPARTMENT OF TRANSPORTATION

ROUTE NO.	SECTION	COUNTY	STATION	SHEET	SHEET NO. 12 31 SHEETS
F.A.P. 312	71BR	RANDOLPH	73	36	
FED. ROAD DIST. NO. 7	ILLINOIS	FED. AID PROJECT			

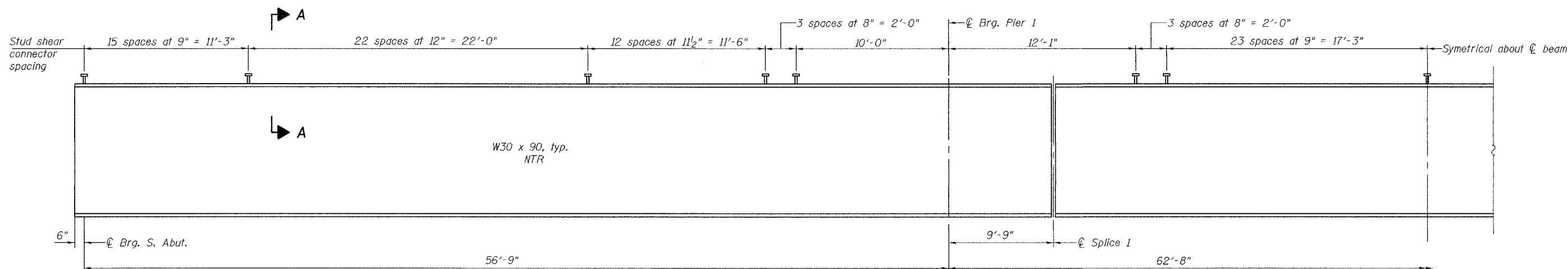
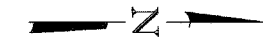
Contract No. 76125



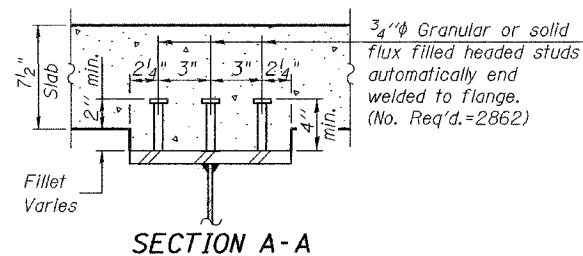
FRAMING PLAN

Note: NTR denotes members to which Notch Toughness Requirements are applicable.

All beams are W30 x 90 AASHTO M270, Grade 50, NTR



BEAM ELEVATION



SECTION A-A

DESIGNED	J.E. Kramer
CHECKED	T.L. Kurtenbach
DRAWN	A.M. Seiber
CHECKED	JEK/TLK

EXAMINED	January 26, 2005	Thomas J. Domagala
PASSED		Ralph E. Anderson

STRUCTURAL STEEL
F.A.P. RT. 312 - SEC. 71BR
RANDOLPH COUNTY
STATION 1128+90
STRUCTURE NO. 079-0048