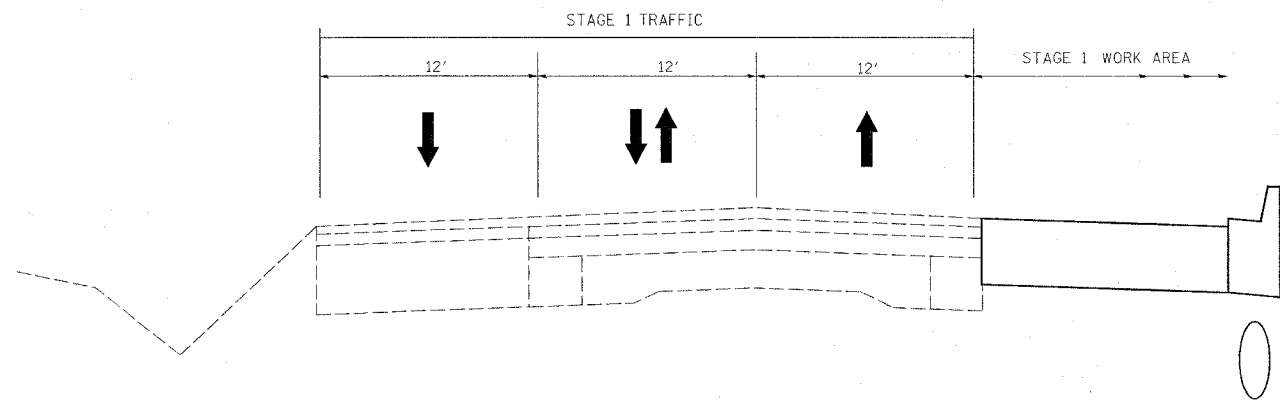
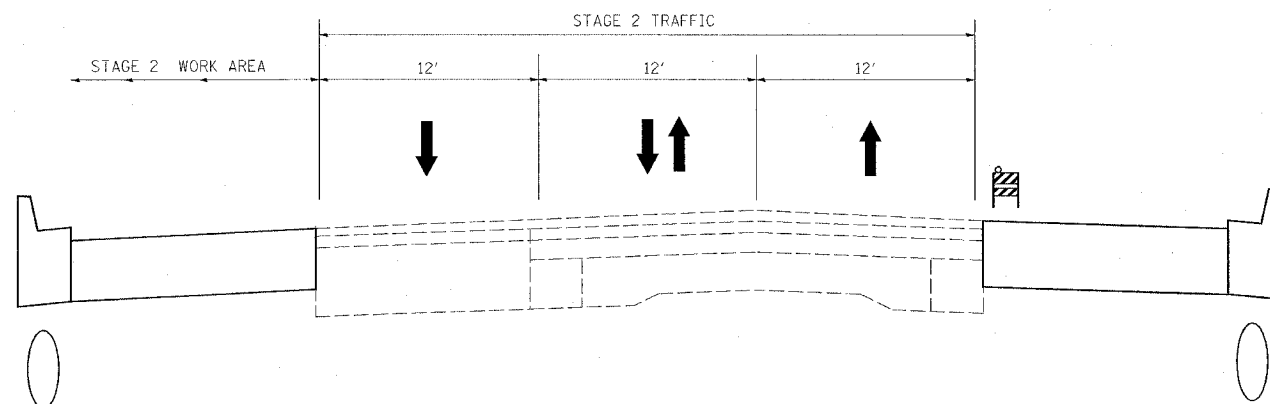


FAP ROUTE	SECTION	COUNTY	TOTAL SHEETS	SHEET NO
586	60R-2,37R-1	MADISON	502	128A
STA.		TO STA.		
CONTRACT NO: 76301				

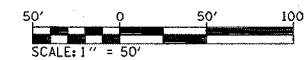
SUGGESTED STAGING
STAGE 1 (+/- 506+70 TO +/- 568+00)



SUGGESTED STAGING
STAGE 2 (+/- 506+70 TO +/- 568+00)



1. REFER TO HIGHWAY STANDARD 701502 FOR DETAILS NOT SHOWN ABOVE.
2. THE CONTRACTOR SHALL MAINTAIN ACCESS TO ALL PROPERTIES AT ALL TIMES.
3. MEDIAN CONSTRUCTION SHALL NOT BE PERFORMED UNTIL WIDENING OPERATIONS ARE COMPLETE ON BOTH SIDES.
4. ONE LANE IN EACH DIRECTION SHALL BE OPEN AT ALL TIMES FROM THE BEGINNING OF THE PROJECT TO THE DOWNTOWN SECTION.
5. PARKING SPACES IN THE DOWNTOWN SECTION MAY BE COMPROMISED ON A SHORT-TERM BASIS DURING MILLING AND RESURFACING OPERATIONS AS DIRECTED BY THE ENGINEER. THE CONTRACTOR MUST NOTIFY THE CITY 48 HOURS BEFORE CLOSING PARKING SPACES.
6. SHORT-TERM LANE CLOSURES MAY BE ALLOWED FOR CONSTRUCTION OPERATIONS IN THE RURAL SECTION.
7. FLAGGERS WILL BE REQUIRED AT ALL LANE CLOSURES, AS DIRECTED BY THE ENGINEER.
8. STAGE I & II WORK AREAS SHALL REMAIN CLOSED UPON COMPLETION UNTIL DIRECTED BY THE ENGINEER. ADDITIONAL BARRICADES FOR LONG TERM LANE CLOSURE TO BE MAINTAINED BY THE CONTRACTOR AND INCLUDED IN THE COST OF TRAFFIC CONTROL & PROTECTION 701501.
9. THE CONTRACTOR MAY SUBMIT ALTERNATE STAGING PLANS TO THE DEPARTMENT FOR APPROVAL.



REVISIONS	
NAME	DATE

ILLINOIS DEPARTMENT OF TRANSPORTATION
**TYPICAL
 STAGE CONSTRUCTION
 IL 162**
 FAP ROUTE 586 (IL 162)
 SECTION 60R-2,37R-1
 MADISON COUNTY
 DRAWN BY:

PLAN	REVISED	DATE
NO.	BY	
NOTE BOOK	ALIGNED CHECKED	
	PLOTTED	
	FILED	
	CAD FILE NAME	