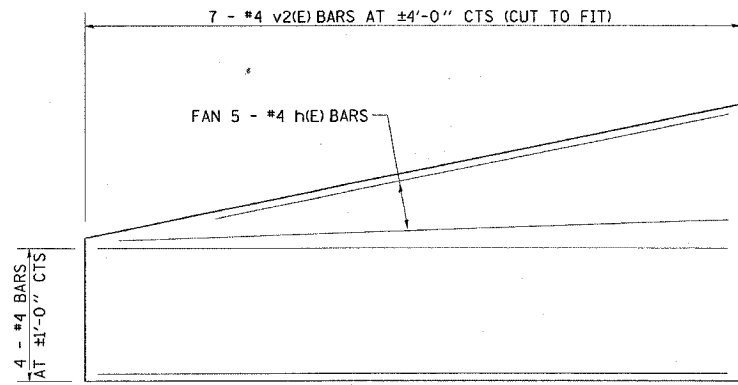
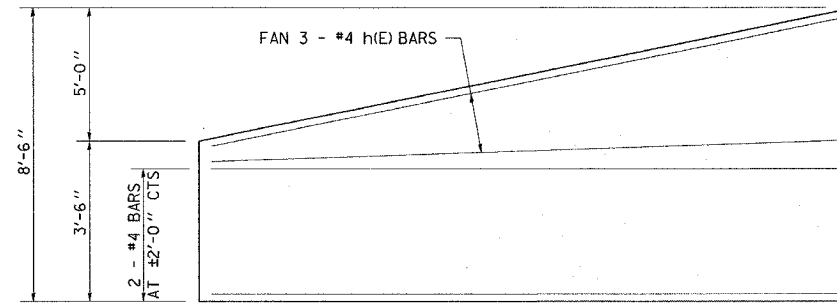


FAP ROUTE	SECTION	COUNTY	TOTAL SHEETS	SHEET NO
586	60R-2, 37R-1	MADISON	502	231
STA.		TO STA.		
CONTRACT NO: 76301				



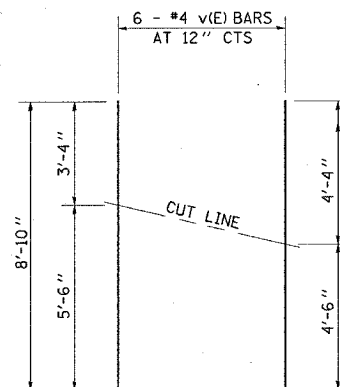
PANEL A (SHOWING FRONT FACE REINFORCEMENT)

DETAIL "A"



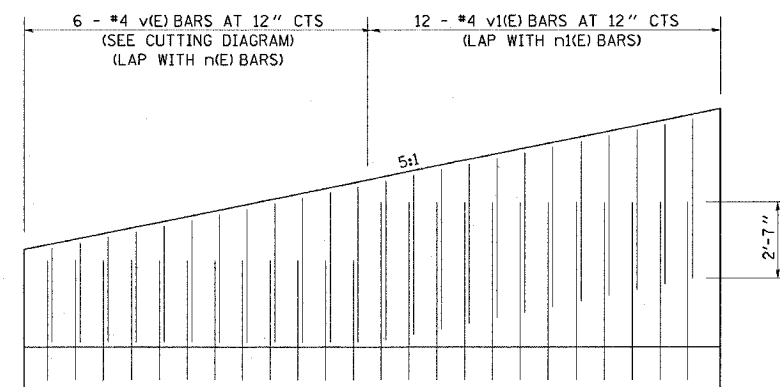
PANEL A (SHOWING BACK FACE HORIZONTAL REINFORCEMENT)

DETAIL "B"



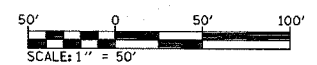
FIELD CUTTING DIAGRAM

* ORDER v(E) BARS FULL LENGTH AND CUT TO FIT AS SHOWN. USE ALL BARS IN BACK FACE IN ASCENDING ORDER.



TYPICAL VERTICAL BAR PLACEMENT - PANEL A (BACK FACE)

DETAIL "C"



ILLINOIS DEPARTMENT OF TRANSPORTATION
RETAINING WALL DETAILS

FAP ROUTE 586
SECTION 60R-2, 37R-1
MADISON COUNTY

DRAWN BY:

PLOT DATE: Friday July 02, 2004 @ 8:08:32 AM

REVISIONS	
NAME	DATE

PLAN	SUPPLIED	DATE
NOTE BOOK	PLOTTED	BY
NO.	BY	
	DATE	
	NO. OF WAY CHECKED	
	FILE NAME	