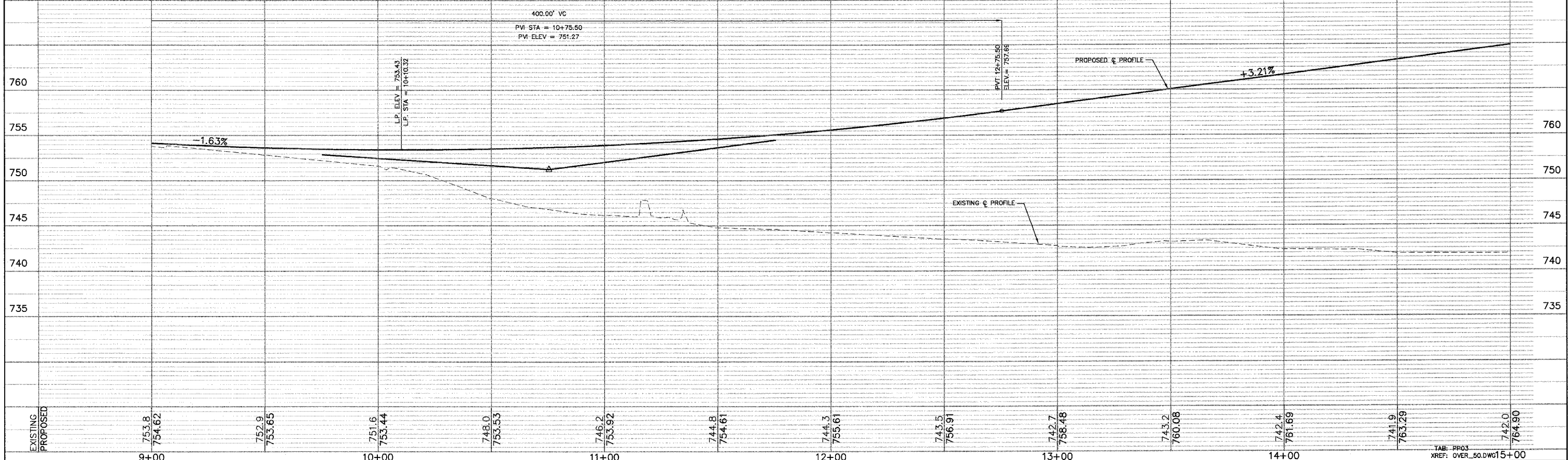


**LEGEND**

- PATH TO BE REMOVED AND REPLACED
- TEMPORARY AGGREGATE
- PATH TO BE PERMANENTLY REMOVED



PREPARED FOR:  
 WHEATON PARK DISTRICT  
 666 S. MAIN STREET  
 WHEATON, ILLINOIS 60187



PREPARED BY:  
**CEMCON, Ltd.**  
 Consulting Engineers, Land Surveyors & Planners  
 2280 White Oak Circle, Suite 100  
 Aurora, Illinois 60504-9675  
 Ph: 630.862.2100 Fax: 630.862.2199  
 E-Mail: cadd@cemcon.com Website: www.cemcon.com

REVISIONS			REVISIONS		
NO.	DATE	DESCRIPTION	NO.	DATE	DESCRIPTION

**BICYCLE BRIDGE STA. 9+00.00 TO 14+50.00**

**PEDESTRIAN/BICYCLE BRIDGE OVER UNION PACIFIC RAILROAD**

FILE NAME: PP_OVR	DSGN. BY: CA	JOB NO.: 551.007	FLD. BK./PG.: ---	SHEET NO. 10 of 54
DISC. NUMBER: 551007	DRN. BY: RDS	DATE: 04-26-04	SCALE: 1" = 20'H:5'V	

Copyright © 2003 CEMCON, Ltd. All rights reserved.