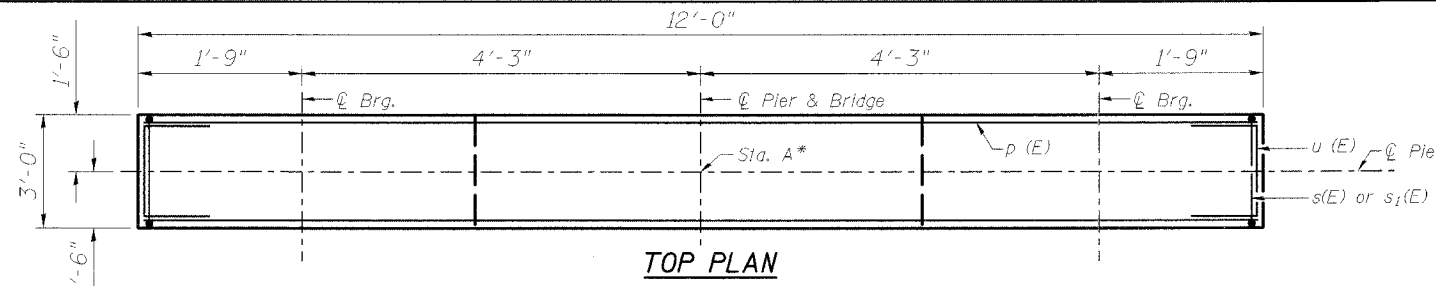
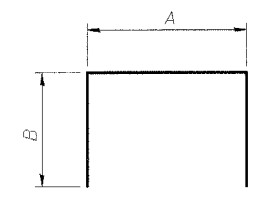


CONTRACT NO. 83560

Notes:
 Space reinforcement in cap to miss anchor bolts.
 Pour steps monolithically with cap.
 For bearing anchor bolt locations see sheet S10, S16 & S17.



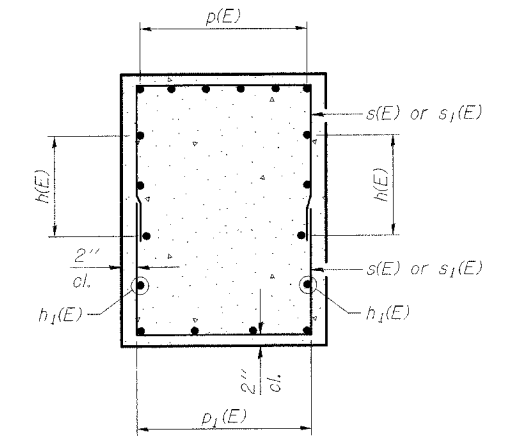
TOP PLAN



BARS s(E), s₁(E), s₂(E)

A & B DIMENSIONS

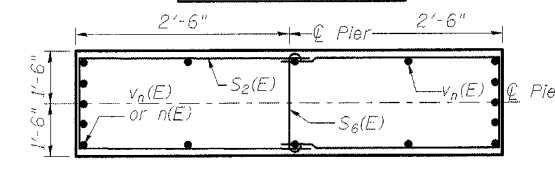
Bar	A	B
s(E)	2'-8"	2'-6"
s ₁ (E)	2'-8"	2'-2"
s ₂ (E)	2'-8"	3'-6"
s ₃ (E)	2'-8"	6'-3"



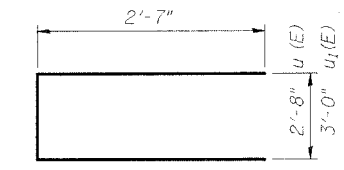
SECTION A-A

BILL OF MATERIAL

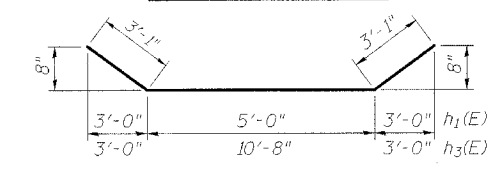
Bar No.	Size	Length	Shape
n(E)	#6	11'-8"	
h ₁ (E)	#6	11'-2"	
h ₂ (E)	#6	17'-4"	
h ₃ (E)	#6	16'-10"	
h ₄ (E)	#6	12'-8"	
n(E)	#9	11'-8"	
n ₁ (E)	#10	13'-4"	
p(E)	#7	11'-8"	
p ₁ (E)	#6	5'-0"	
p ₂ (E)	#7	17'-4"	
s(E)	#5	7'-8"	
s ₁ (E)	#5	7'-0"	
s ₂ (E)	#5	9'-8"	
s ₃ (E)	#5	15'-2"	
s ₄ (E)	#5	16'-3"	
s ₅ (E)	#4	6'-0"	
s ₆ (E)	#5	3'-7"	
s ₇ (E)	#4	7'-7"	
u(E)	#6	7'-10"	
u ₁ (E)	#6	8'-2"	
v ₁ (E)	#9	16'-2"	
v ₂ (E)	#9	20'-7"	
v ₃ (E)	#9	26'-2"	
v ₄ (E)	#10	29'-5"	
v ₅ (E)	#10	25'-9"	
v ₆ (E)	#9	25'-2"	
v ₇ (E)	#9	22'-10"	
v ₈ (E)	#9	22'-4"	
v ₉ (E)	#9	19'-0"	
v ₁₀ (E)	#9	15'-4"	
v ₁₁ (E)	#7	13'-0"	
v ₁₂ (E)	#7	19'-0"	
v ₁₇ (E)	#7	20'-0"	



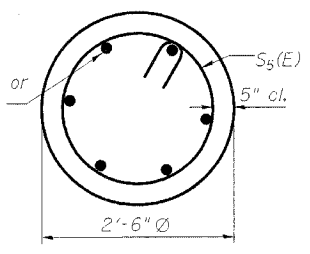
SECTION B-B



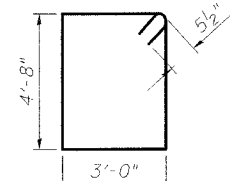
BAR u(E) & u₁(E)



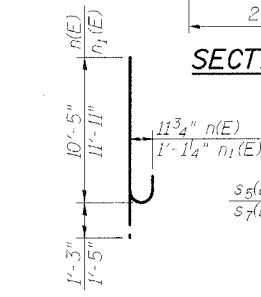
BAR h₁(E), h₃(E)



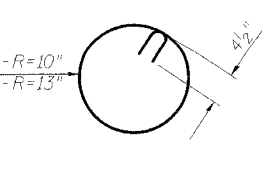
SECTION D-D



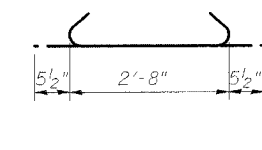
BAR s₄(E)



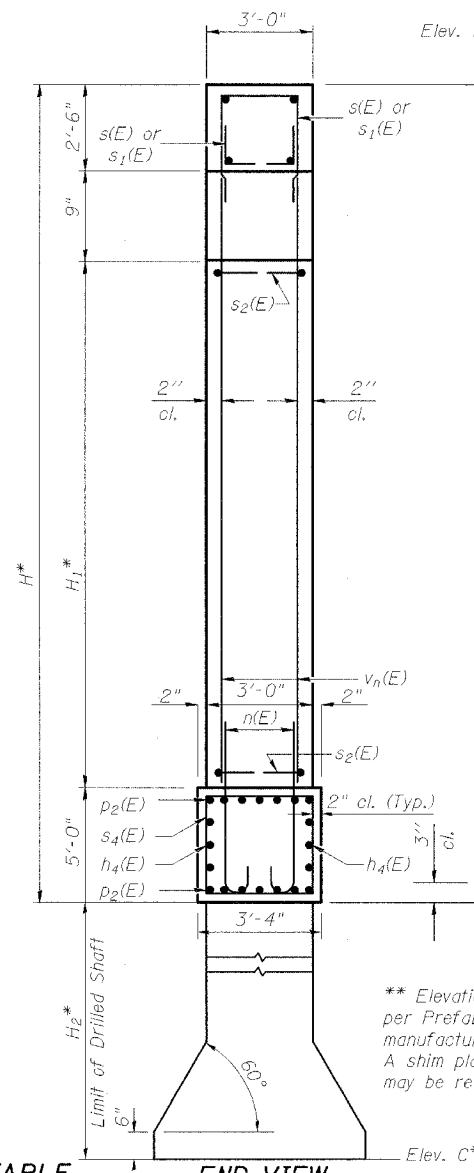
BAR n(E) & n₁(E)



BAR s₅(E) & s₇(E)

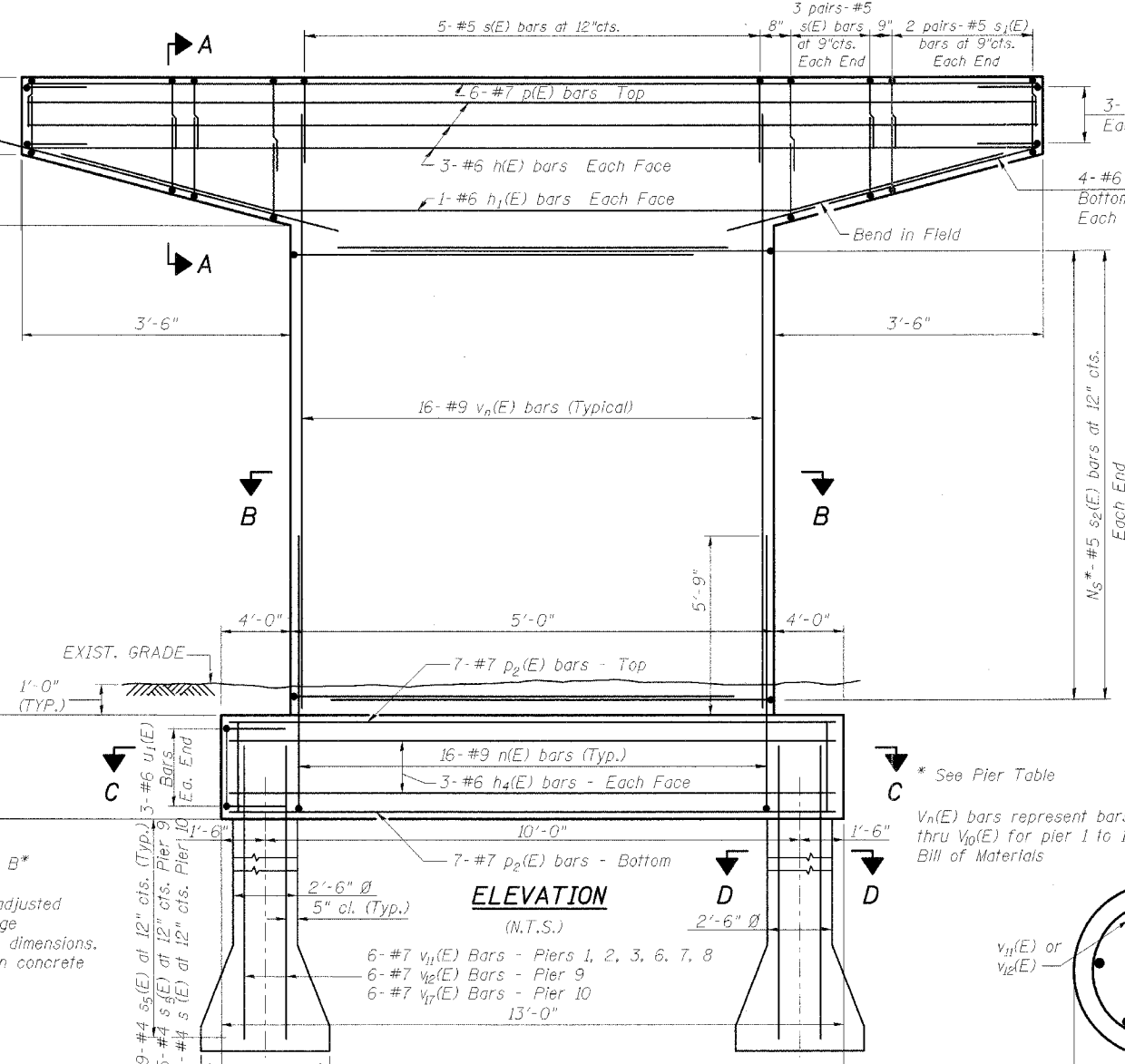


BAR s₆(E)



END VIEW

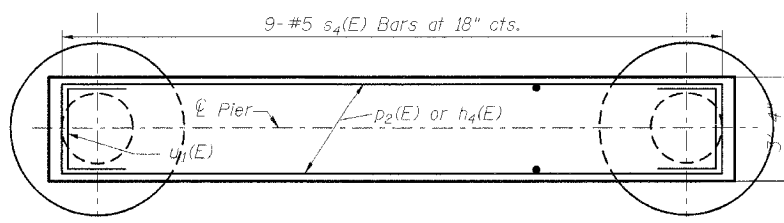
** Elevation A to be adjusted per Prefabricated Bridge manufacturer's bearing dimensions. A shim plate or step in concrete may be required.



ELEVATION

(N.T.S.)

NET ALLOWABLE BEARING PRESSURE UNDER THE DRILLED SHAFTS = 7,500 psf



SECTION C-C

PIER TABLE

PIER NO.	STATION	ELEV. A	ELEV. B	H (FT)	H ₁ (FT)	N _s	D (FT)	H ₂ (FT)	Elev. C
1	14+21.022	757.98	736.30	21.68	13.43	14	7	9	727.30
2	15+19.022	761.39	735.34	26.05	17.80	19	7	9	726.34
3	16+17.022	764.27	732.62	31.65	23.40	24	7	9	723.62
4**	16+92.741	766.79	731.89	34.90	26.65	28	8	9	722.89
5**	18+35.630	767.33	736.06	31.27	23.02	24	8	9	727.06
6	18+95.580	765.58	734.97	30.61	22.36	23	7	9	725.97
7	19+71.580	762.69	734.37	28.32	20.07	21	6.5	9	725.37
8	20+31.655	760.91	733.04	27.87	19.62	21	6	9	724.04
9	20+92.364	758.90	734.35	24.55	16.30	17	6.5	15	719.35
10	21+72.364	755.94	735.10	20.84	12.59	14	6.5	16	719.10

PREPARED FOR:
 WHEATON PARK DISTRICT
 666 S. MAIN STREET
 WHEATON, ILLINOIS 60187



PREPARED BY:
CEMCON, Ltd.
 Consulting Engineers, Land Surveyors & Planners
 2280 White Oak Circle, Suite 100
 Aurora, Illinois 60504-9675
 Ph: 630.862.2100 Fax: 630.862.2199
 E-Mail: cadd@cemcon.com Website: www.cemcon.com

NO.		DATE	DESCRIPTION	NO.		DATE	DESCRIPTION

PIERS 1, 2, 3 & 6 THRU 10 - DETAILS - SHEET 1 OF 2			
PEDESTRIAN/BICYCLE PATH BRIDGE OVER UNION PACIFIC RAILROAD			
FILE NAME: PIER	DSGN. BY: MMH	JOB NO.: 551.007	FLD. BK./PG.: ----
DISC. NUMBER: 551007	DRN. BY: KMS	DATE: 04-26-04	SCALE: ----
SHEET NO. 38 of 54			INDEX OF BRIDGE SHEETS SHEET S25 OF S29 Copyright © 2003 Cemcon, Ltd. All rights reserved.