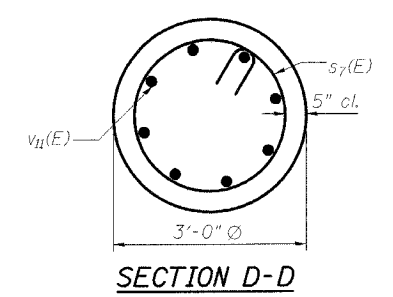
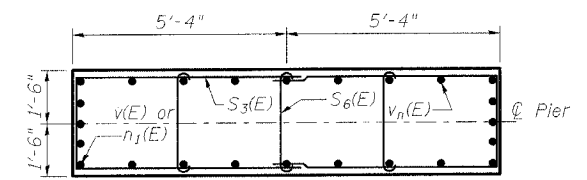
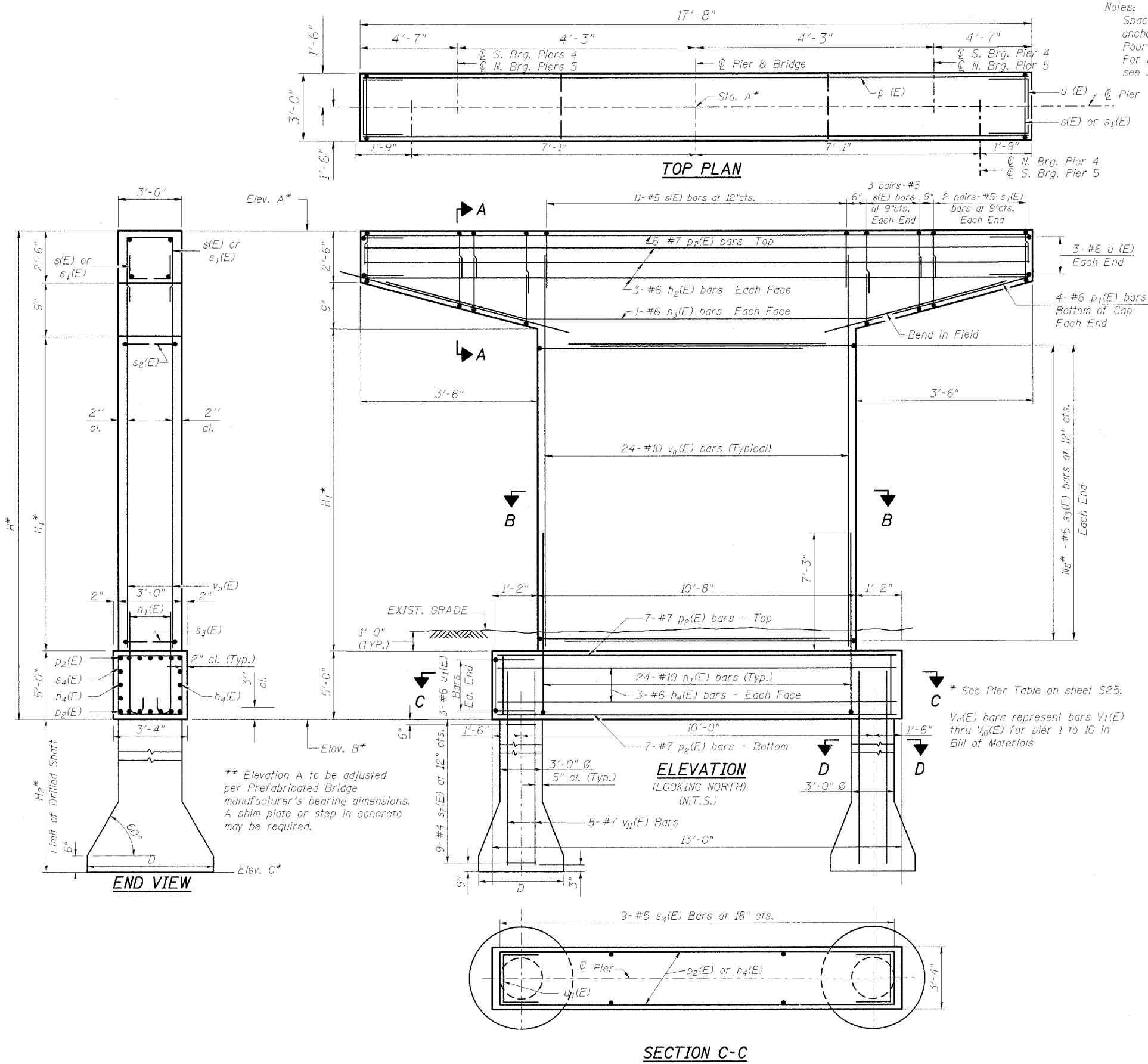


CONTRACT NO. 83560

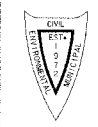
Notes:
 Space reinforcement in cap to miss anchor bolts.
 Pour steps monolithically with cap.
 For bearing anchor bolt locations see sheets S10, S16 & S17.



** Elevation A to be adjusted per Prefabricated Bridge manufacturer's bearing dimensions. A shim plate or step in concrete may be required.

* See Pier Table on sheet S25.
 Vn(E) bars represent bars V1(E) thru V10(E) for pier 1 to 10 in Bill of Materials

PREPARED FOR:
 WHEATON PARK DISTRICT
 666 S. MAIN STREET
 WHEATON, ILLINOIS 60187



PREPARED BY:
CEMCON, Ltd.
 Consulting Engineers, Land Surveyors & Planners
 2280 White Oak Circle, Suite 100
 Aurora, Illinois 60504-9675
 Ph: 630.862.2100 Fax: 630.862.2199
 E-Mail: codd@cemcon.com Website: www.cemcon.com

NO.		DATE	DESCRIPTION	REVISIONS	
NO.	DATE	DESCRIPTION	NO.	DATE	DESCRIPTION