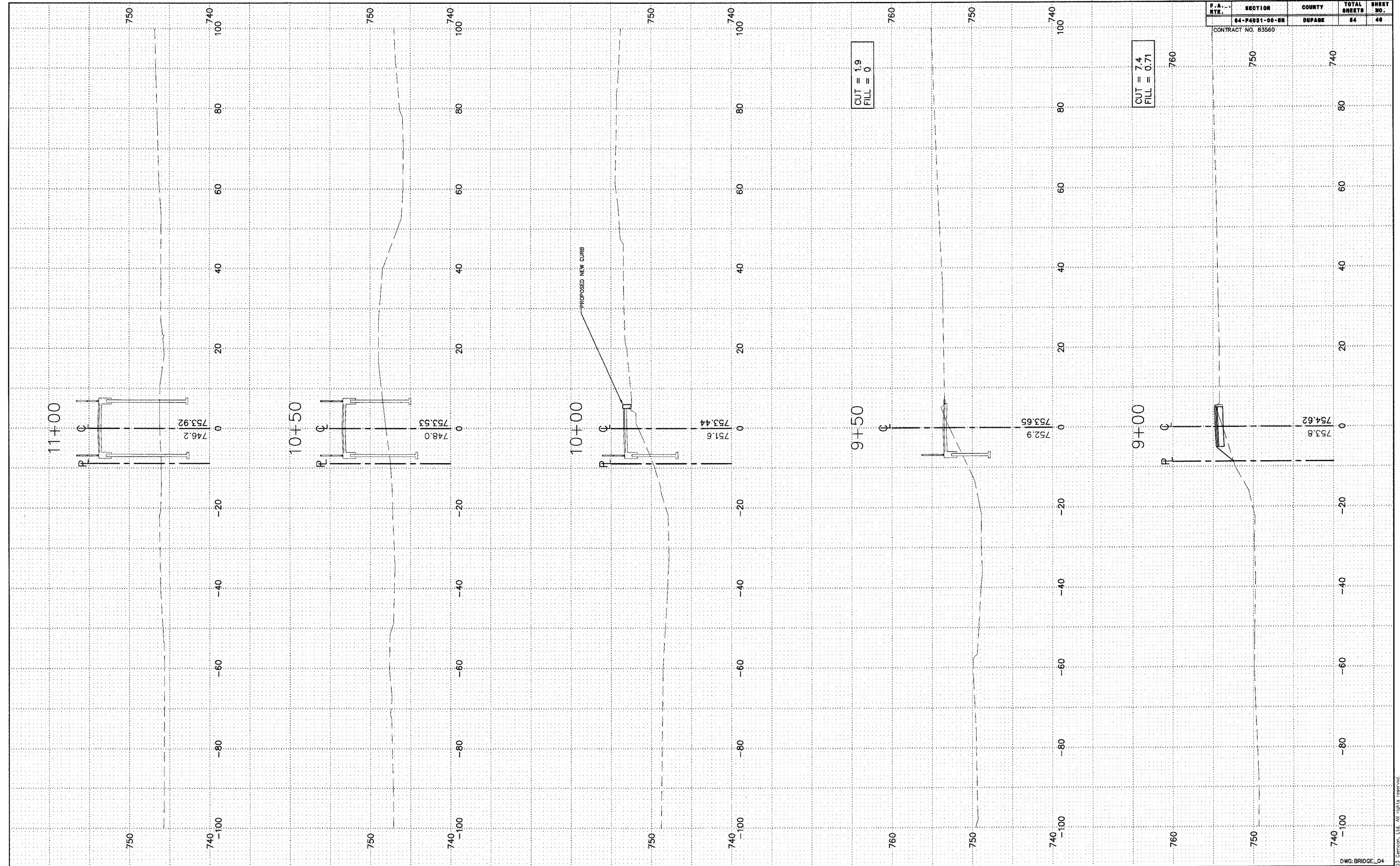


STATE	SECTION	COUNTY	TOTAL SHEETS	SHEET NO.
IL	04-P4031-00-BR	DUPAGE	54	46

CONTRACT NO. 83560



PEDESTRIAN PATH STA. 9+00.00 TO STA. 11+00.00				
FILE NAME: XSECTION	DSGN. BY: CA	JOB NO.: 551.007	FLD. BK./PG.: ----	SHEET NO.
DISC. NUMBER: 551007	DRN. BY: RDS	DATE: 04-26-04	SCALE: 1" = 10' H, 1" = 5' V	46 of 54

Copyright © 2003 Camcon, Ltd. All rights reserved.

DWG: BRIDGE_04