

F.A.U. RTE.	SECTION	COUNTY	TOTAL SHEETS	SHEET NO.
2585 00-00068-01-WR		COOK	145	10
STA.		TO STA.		
FED. ROAD DIST. NO.		ILLINOIS FED. AID PROJECT		
CONTRACT NUMBER 83785				



THOREAU AVENUE ALIGNMENT

DESCRIPTION	STATION	NORTHING	EASTING
B.O.A.	392+13.71	1965919.093	1061916.782
P.C.	399+94.33	1965859.720	1062695.146
P.I.	401+29.31	1965849.454	1062829.728
P.T.	402+58.00	1965772.858	1062940.862
E.O.A.	405+72.85	1965594.184	1063200.103

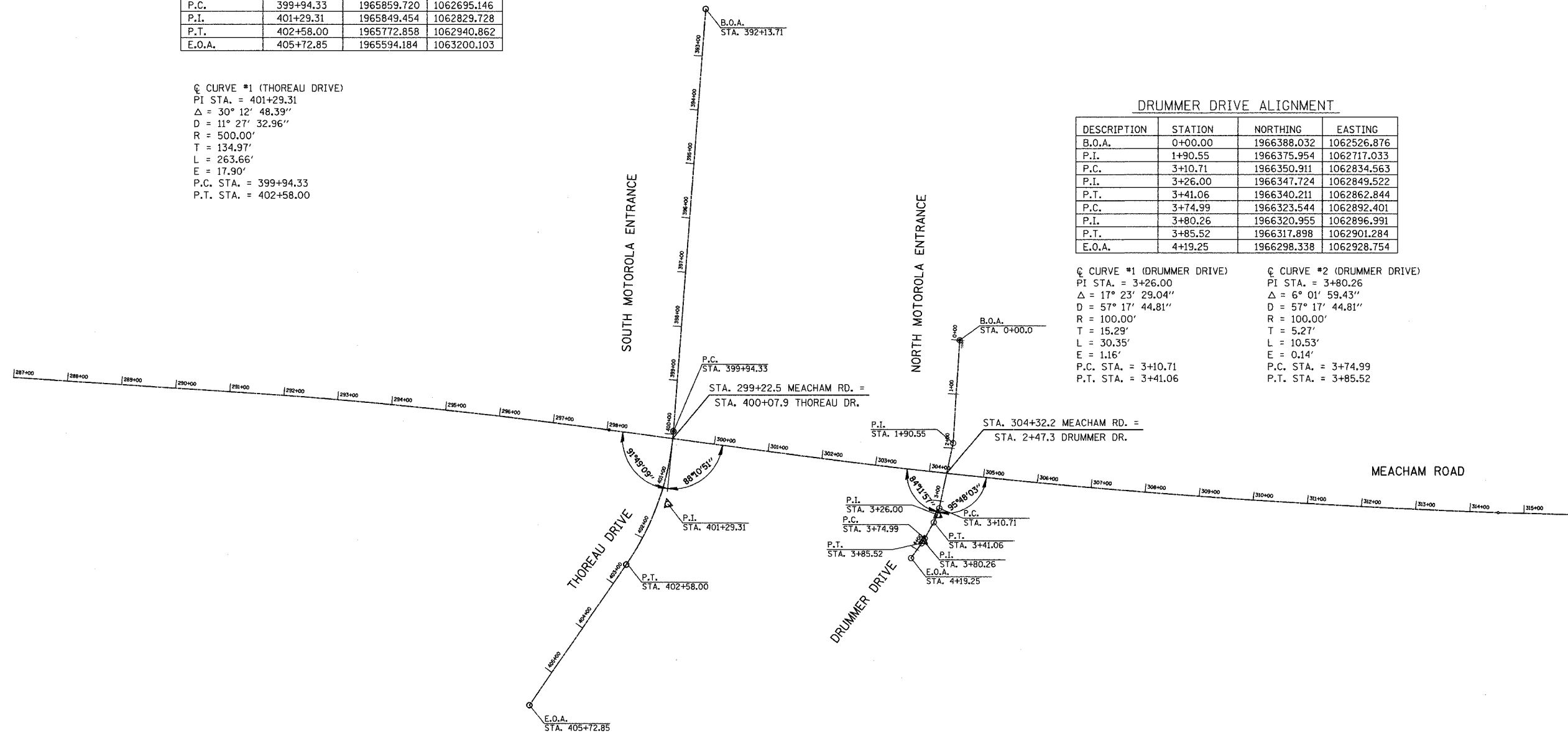
C CURVE #1 (THOREAU DRIVE)  
 PI STA. = 401+29.31  
 $\Delta = 30^\circ 12' 48.39''$   
 $D = 11^\circ 27' 32.96''$   
 $R = 500.00'$   
 $T = 134.97'$   
 $L = 263.66'$   
 $E = 17.90'$   
 P.C. STA. = 399+94.33  
 P.T. STA. = 402+58.00

DRUMMER DRIVE ALIGNMENT

DESCRIPTION	STATION	NORTHING	EASTING
B.O.A.	0+00.00	1966388.032	1062526.876
P.I.	1+90.55	1966375.954	1062717.033
P.C.	3+10.71	1966350.911	1062834.563
P.I.	3+26.00	1966347.724	1062849.522
P.T.	3+41.06	1966340.211	1062862.844
P.C.	3+74.99	1966323.544	1062892.401
P.I.	3+80.26	1966320.955	1062896.991
P.T.	3+85.52	1966317.898	1062901.284
E.O.A.	4+19.25	1966298.338	1062928.754

C CURVE #1 (DRUMMER DRIVE)  
 PI STA. = 3+26.00  
 $\Delta = 17^\circ 23' 29.04''$   
 $D = 57^\circ 17' 44.81''$   
 $R = 100.00'$   
 $T = 15.29'$   
 $L = 30.35'$   
 $E = 1.16'$   
 P.C. STA. = 3+10.71  
 P.T. STA. = 3+41.06

C CURVE #2 (DRUMMER DRIVE)  
 PI STA. = 3+80.26  
 $\Delta = 6^\circ 01' 59.43''$   
 $D = 57^\circ 17' 44.81''$   
 $R = 100.00'$   
 $T = 5.27'$   
 $L = 10.53'$   
 $E = 0.14'$   
 P.C. STA. = 3+74.99  
 P.T. STA. = 3+85.52



NOTES:  
 EXISTING ROAD CONFIGURATION SHOWN  
 B.O.A. = BEGINNING OF ALIGNMENT  
 P.C. = POINT OF CURVATURE  
 P.T. = POINT OF TANGENT  
 P.I. = POINT OF INTERSECTION  
 E.O.A. = END OF ALIGNMENT

REVISIONS	
NAME	DATE

ILLINOIS DEPARTMENT OF TRANSPORTATION  
 SIDE ROADS  
 THOREAU ALIGNMENT  
 STATION 272+00 TO STATION 315+00  
  
 DATE 12/20/04  
 DESIGNED BY KRY  
 CHECKED BY RRM