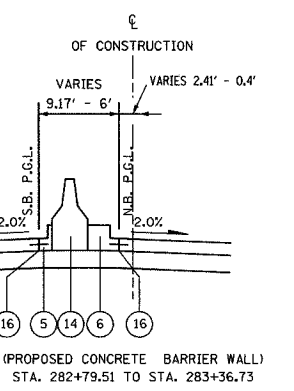
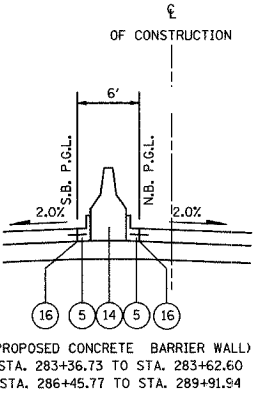
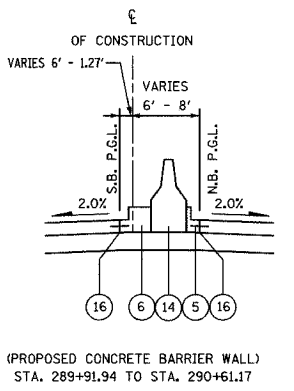
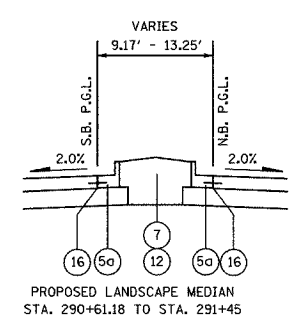
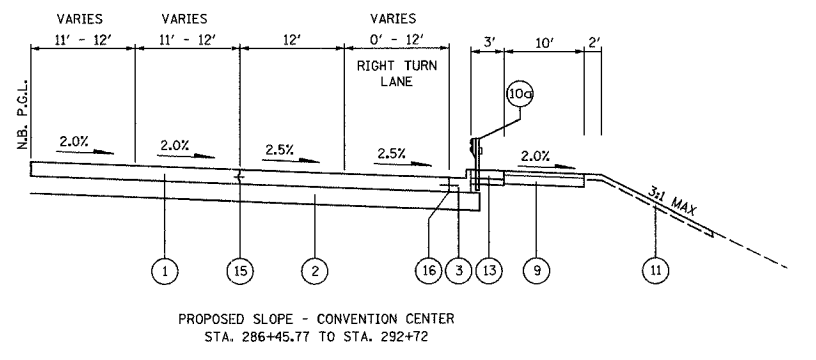
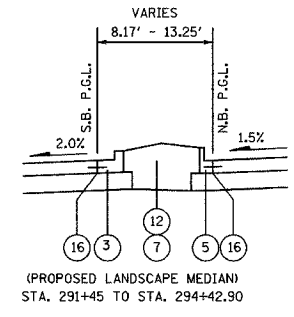
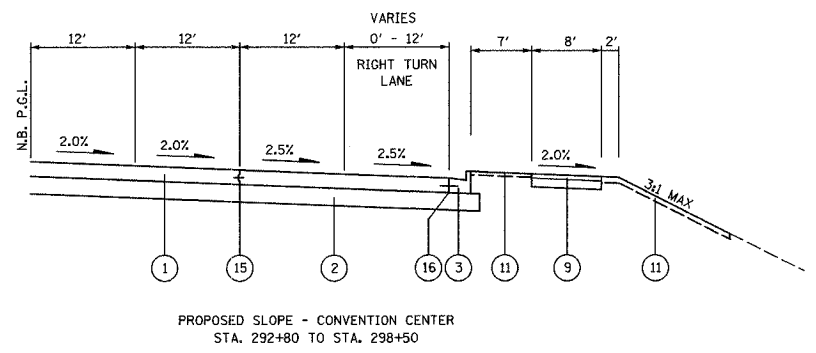
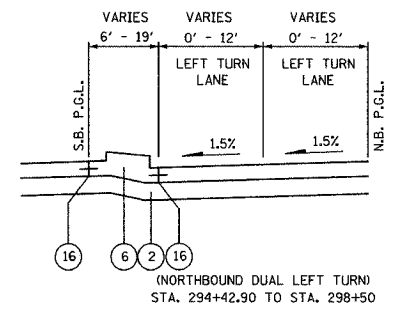


F.A.U. RTE.	SECTION	COUNTY	TOTAL SHEETS	SHEET NO.
2585	00-00068-01-WR	COOK	145	15
STA.	TO STA.			
FED. ROAD DIST. NO.	ILLINOIS	FED. AID PROJECT		
CONTRACT NUMBER 83785				



- 1 PORTLAND CEMENT CONCRETE PAVEMENT, 10" (JOINTED)
- 2 AGGREGATE SUBGRADE, 12"
- 3 COMBINATION CONCRETE CURB AND GUTTER, TYPE B-6.24 (DOWELED)
- 4 COMBINATION CONCRETE CURB AND GUTTER, TYPE B-6.12 (DOWELED)
- 5 COMBINATION CONCRETE CURB AND GUTTER, TYPE B-9.12 (DOWELED)
- 5a COMBINATION CONCRETE CURB AND GUTTER, TYPE B-9.24 (DOWELED)
- 6 CONCRETE MEDIAN, TYPE SB (SPECIAL)
- 7 LANDSCAPE MEDIAN
- 8 PORTLAND CEMENT CONCRETE SIDEWALK 5 INCH AGGREGATE BASE COURSE, TYPE B, 4"
- 9 SURF. CRSE., SUPERPAVE, MIX "C", N50 2" AGGREGATE BASE COURSE, TYPE B, 6"
- 10 STEEL PLATE BEAM GUARDRAIL, TYPE A
- 10a STEEL PLATE BEAM GUARDRAIL, TYPE A (SPECIAL)
- 11 SODDING, SALT TOLERANT TOPSOIL FURNISH AND PLACE, 4"
- 12 MEDIAN SOIL MIX FURNISH AND PLACE
- 13 BITUMINOUS SHOULDER 6" AGGREGATE BASE COURSE, TYPE B, 4"
- 14 CONCRETE BARRIER WALL (SPECIAL)
- 15 LONGITUDINAL CONSTRUCTION JOINT (INCIDENTAL TO PORTLAND CEMENT CONCRETE PAVEMENT, 10" JOINTED)
- 16 DRILL AND GROUT NO. 6 TIE (EPOXY COATED) @ 24" C-C (INCIDENTAL TO COMBINATION CONCRETE CURB AND GUTTER AND PORTLAND CEMENT CONCRETE PAVEMENT, 10" (JOINTED))
- 17 PORTLAND CEMENT CONCRETE SURFACE REMOVAL (COLD MILLING) VARIABLE DEPTH
- 18 POLYMERIZED BITUMINOUS CONCRETE SURFACE COURSE, SUPERPAVE, MIX "F", N90, 1-3/4"

REVISIONS	
NAME	DATE

ILLINOIS DEPARTMENT OF TRANSPORTATION

MEACHAM ROAD
TYPICAL SECTION - PROPOSED
STATION 274+70 TO STATION 292+92.2
SHEET 2 OF 2

DESIGNED BY KRY
CHECKED BY RRM
DATE 12/20/04