

F.A.U. RTE.	SECTION	COUNTY	TOTAL SHEETS	SHEET NO.
2585	00-00068-01-WR	COOK	145	21
STA.		TO STA.		
FED. ROAD DIST. NO.		ILLINOIS	FED. AID PROJECT	
CONTRACT NUMBER 83785				



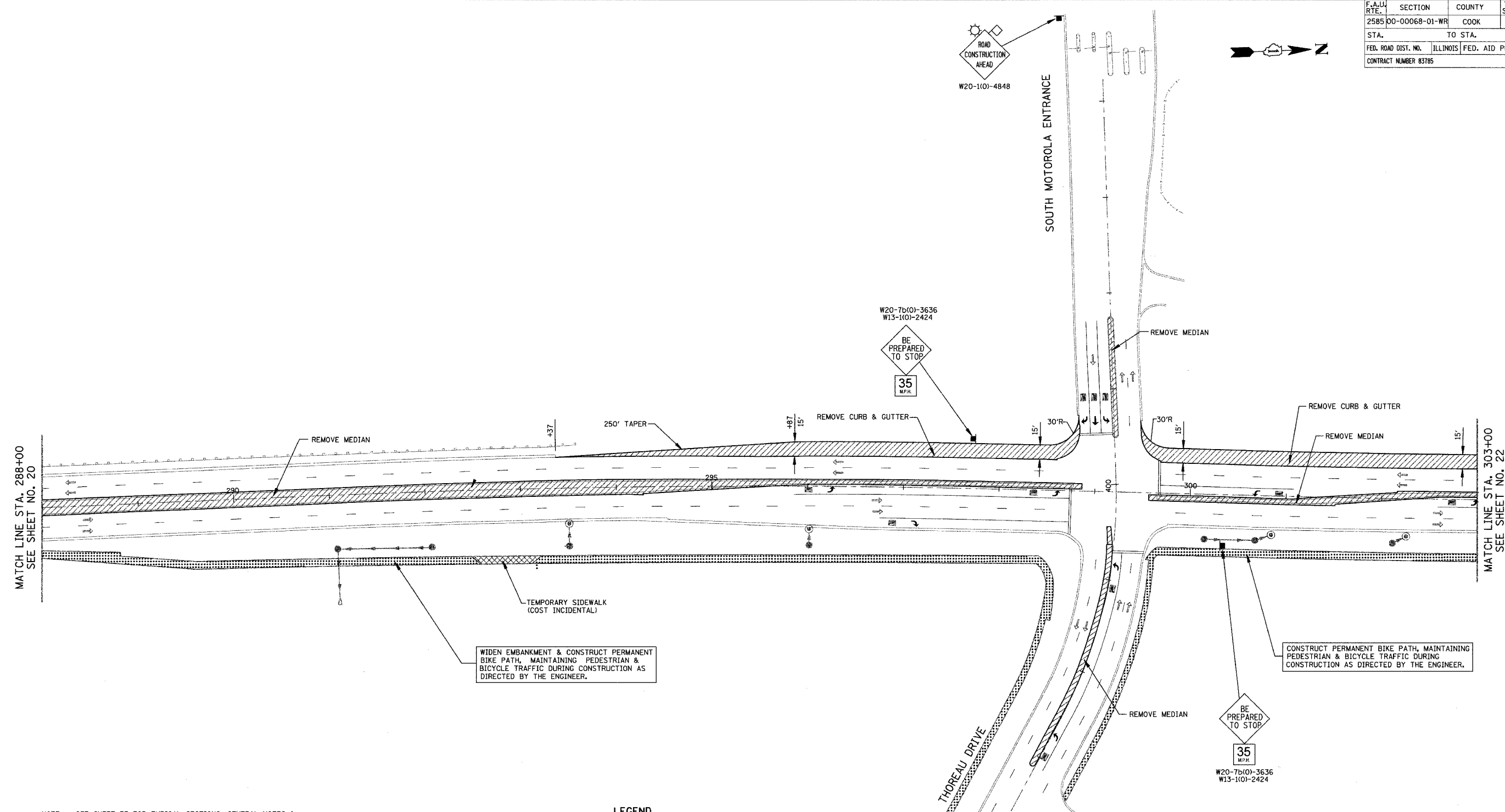
ROAD CONSTRUCTION AHEAD
W20-110-4848

SOUTH MOTOROLA ENTRANCE

W20-7b(0)-3636
W13-110-2424
BE PREPARED TO STOP
35 MPH

MATCH LINE STA. 288+00
SEE SHEET NO. 20

MATCH LINE STA. 303+00
SEE SHEET NO. 22



NOTE: SEE SHEET 37 FOR TYPICAL SECTIONS, GENERAL NOTES & CONSTRUCTION SEQUENCE.

CONSTRUCT TEMPORARY PAVEMENT USING TEMPORARY DAYTIME LANE CLOSURES WITH FLAGGERS (REF. STANDARD 701421).
NEW & RELOCATED SIGNS SHALL BE PLACED 3.5 FEET FROM THE EDGE OF TEMPORARY PAVEMENT OR BACK OF CURB.
ALL PAVEMENT MARKINGS SHOWN ARE EXISTING.

LEGEND

- PERMANENT CONSTRUCTION DURING STAGE I
- *TEMPORARY PAVEMENT CONSTRUCTED DURING STAGE I
- STORM SEWERS INSTALLED DURING STAGE I
- DIRECTION OF SINGLE LANE OF VEHICULAR TRAFFIC DURING STAGE I
- TEMPORARY TRAFFIC SIGN (TYPE & LEGEND AS SHOWN)
- *BITUMINOUS BASE COURSE, SUPERPAVE 8" WITH NO BINDER OR SURFACE COURSE

REVISIONS	
NAME	DATE

ILLINOIS DEPARTMENT OF TRANSPORTATION
MEACHAM ROAD
SUGGESTED CONSTRUCTION PROCEDURE
& MAINTENANCE OF TRAFFIC
STATION 288+00 TO STATION 303+00
STAGE I

50 0 50
SCALE IN FEET

DESIGNED BY RJK
CHECKED BY RRM

DATE 12/20/04