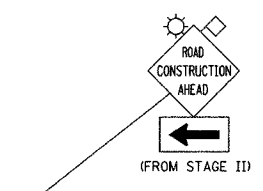
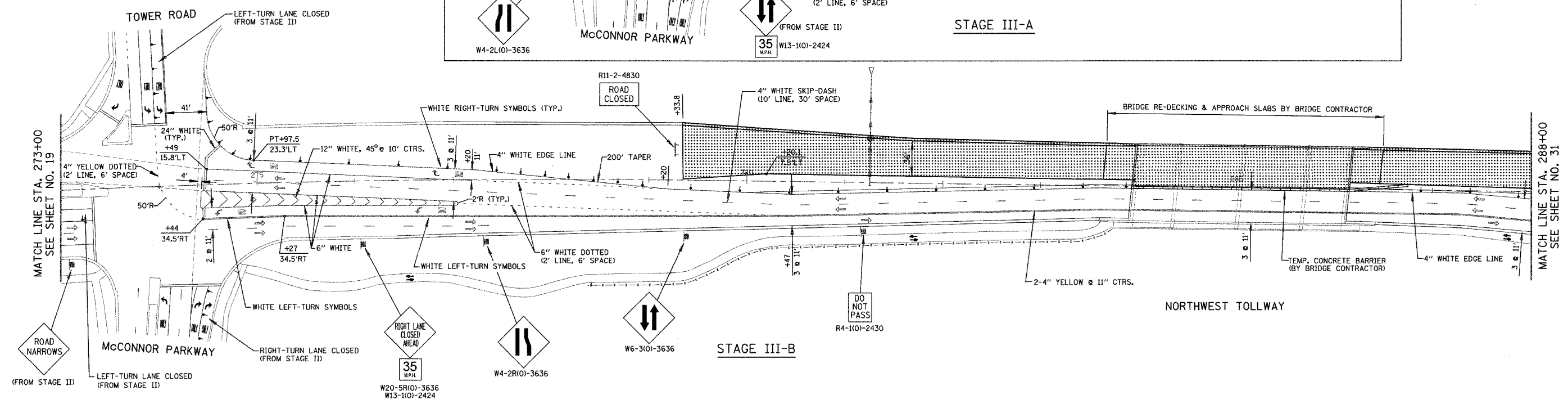
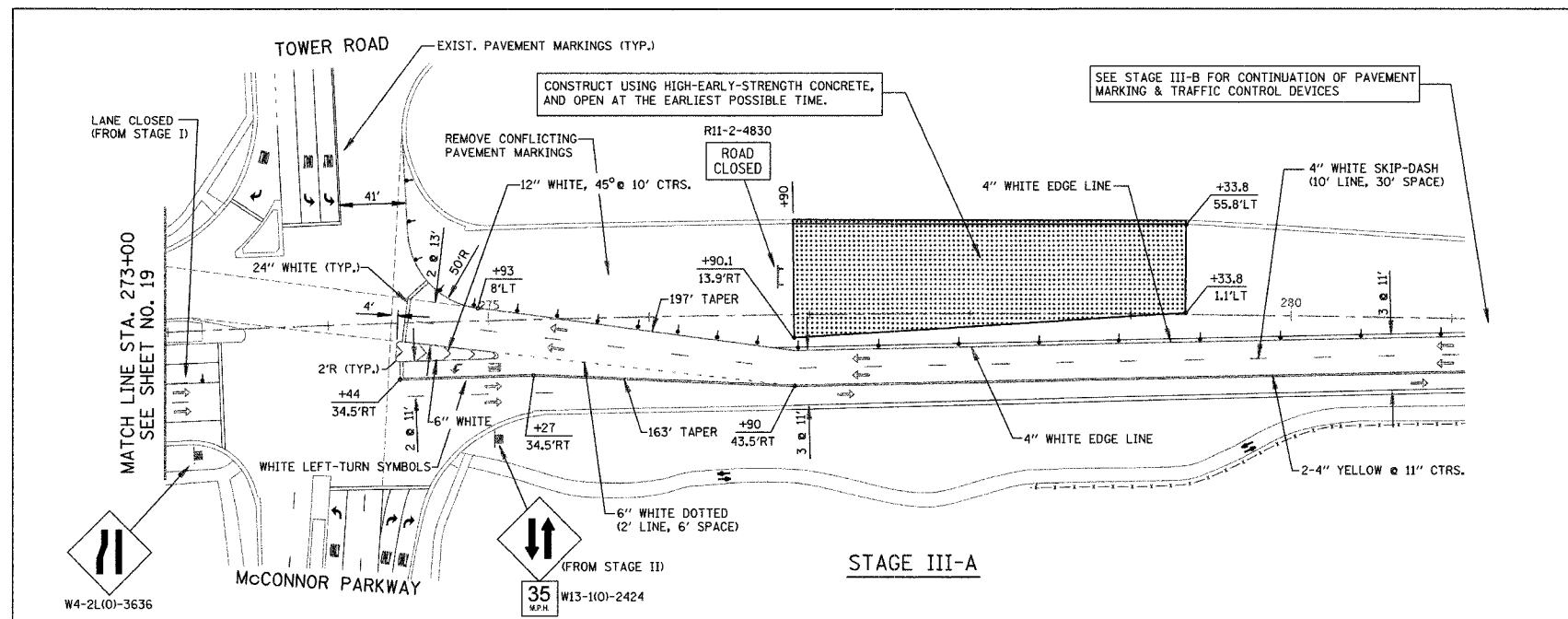
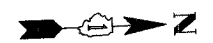


F.A.U. RTE.	SECTION	COUNTY	TOTAL SHEETS	SHEET NO.
2585	00-00068-01-WR	COOK	145	30
STA.	TO STA.			
FED. ROAD DIST. NO.	ILLINOIS	FED. AID PROJECT		
CONTRACT NUMBER 83785				



NOTE: SEE SHEET 37 FOR TYPICAL SECTIONS, GENERAL NOTES & CONSTRUCTION SEQUENCE.

NEW & RELOCATED SIGNS SHALL BE PLACED 3.5 FEET FROM THE EDGE OF TEMPORARY PAVEMENT OR BACK OF CURB OR EDGE LINE.

ALL PROPOSED PAVEMENT MARKINGS ON THIS SHEET SHALL BE "TEMPORARY PAVEMENT MARKINGS" IN ACCORDANCE WITH ARTICLE 703.05 OF THE "STANDARD SPECIFICATIONS".

LEGEND

- PERMANENT CONSTRUCTION DURING STAGE III-A OR III-B
- STORM SEWERS INSTALLED DURING STAGE III-B
- DIRECTION OF SINGLE LANE OF VEHICULAR TRAFFIC DURING STAGE III-A OR III-B
- PATH OPEN TO PEDESTRIAN & BICYCLE TRAFFIC DURING STAGES III-A & III-B
- TYPE II BARRICADES WITH MONO-DIRECTIONAL STEADY-BURN LIGHTS @ 50' CTRS. (25' SPACING IN TAPERS & CURVES)
- TYPE III BARRICADE
- TEMPORARY TRAFFIC SIGN (TYPE & LEGEND AS SHOWN)

REVISIONS	
NAME	DATE

ILLINOIS DEPARTMENT OF TRANSPORTATION
MEACHAM ROAD
SUGGESTED CONSTRUCTION PROCEDURE & MAINTENANCE OF TRAFFIC
TOWER ROAD/McCONNOR PARKWAY TO STA. 288+00
STAGES III-A & III-B

SCALE IN FEET
50 0 50
DATE 12/20/04

DESIGNED BY RJK
CHECKED BY RRM