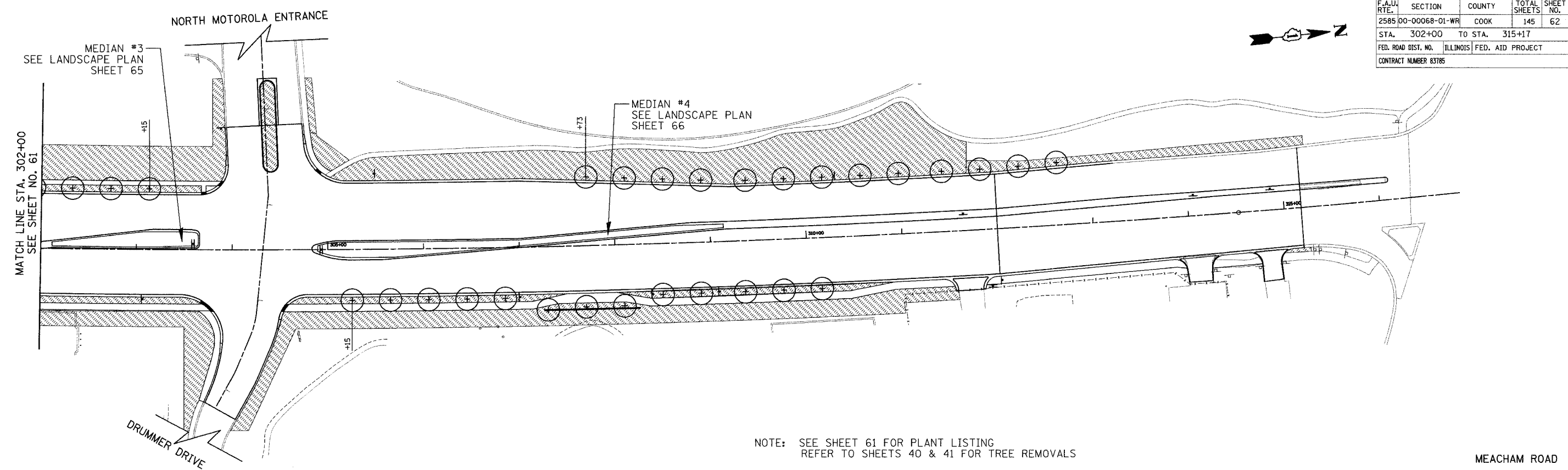
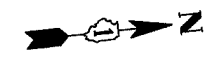
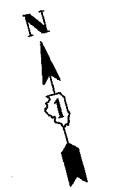
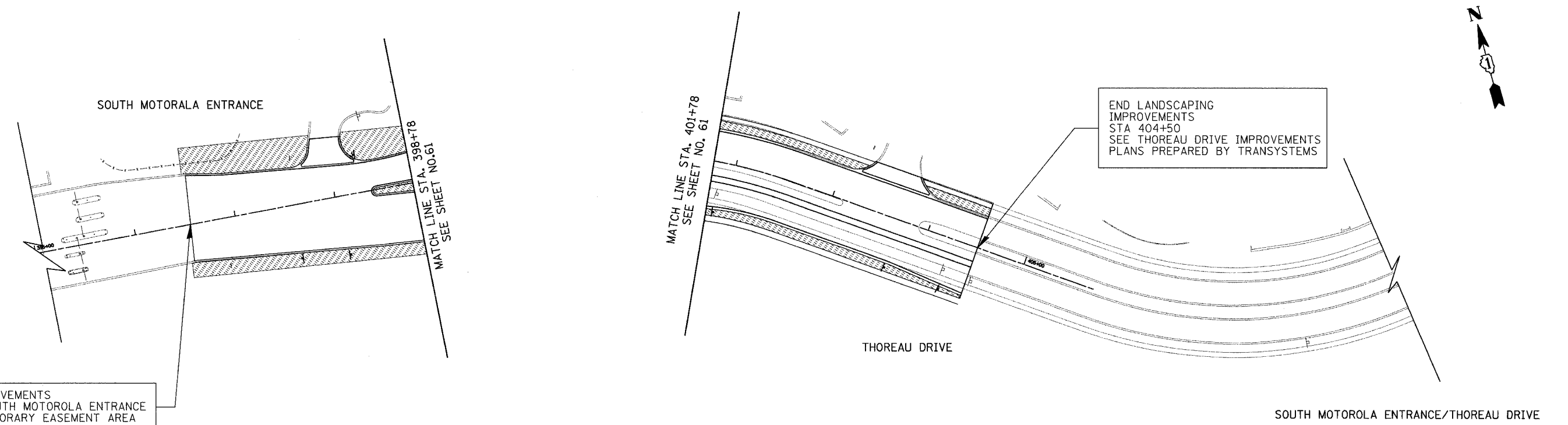


F.A.U. RTE.	SECTION	COUNTY	TOTAL SHEETS	SHEET NO.
2585 00-00068-01-WR		COOK	145	62
STA. 302+00	TO STA. 315+17			
FED. ROAD DIST. NO.	ILLINOIS FED. AID PROJECT			
CONTRACT NUMBER 83785				



NOTE: SEE SHEET 61 FOR PLANT LISTING  
REFER TO SHEETS 40 & 41 FOR TREE REMOVALS

MEACHAM ROAD



LANDSCAPE IMPROVEMENTS  
ADJACENT TO SOUTH MOTOROLA ENTRANCE  
LIMITED TO TEMPORARY EASEMENT AREA

END LANDSCAPING  
IMPROVEMENTS  
STA 404+50  
SEE THOREAU DRIVE IMPROVEMENTS  
PLANS PREPARED BY TRANSYSTEMS

SOUTH MOTOROLA ENTRANCE/THOREAU DRIVE

REVISIONS	
NAME	DATE

ILLINOIS DEPARTMENT OF TRANSPORTATION  
**SIDE STREET  
LANDSCAPING PLANS**  
STATION 302+00 TO STATION 315+17  
STATION 401+78 TO STATION 405+00  
STATION 395+00 TO STATION 398+78  
SCALE IN FEET  
DESIGNED BY KRY  
CHECKED BY RRM  
DATE 12/20/04