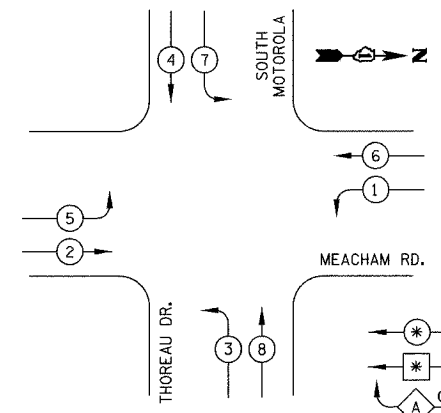
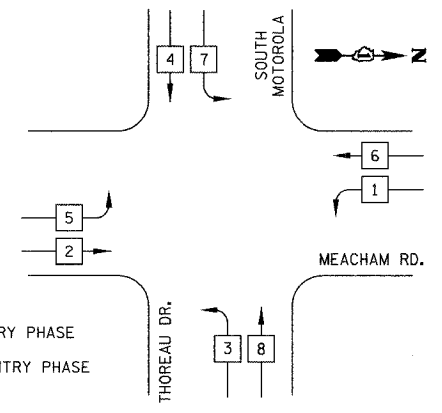


|                       |                |                  |              |           |
|-----------------------|----------------|------------------|--------------|-----------|
| F.A.U. RTE.           | SECTION        | COUNTY           | TOTAL SHEETS | SHEET NO. |
| 2585                  | 00-00068-01-WR | COOK             | 145          | 79        |
| STA. XXX+XX           |                | TO STA. XXX+XX   |              |           |
| FED. ROAD DIST. NO.   | ILLINOIS       | FED. AID PROJECT |              |           |
| CONTRACT NUMBER 83785 |                |                  |              |           |

**TEMPORARY CONTROLLER SEQUENCE**  
EXISTING PHASING, M.O.T. STAGE I THRU STAGE III-B



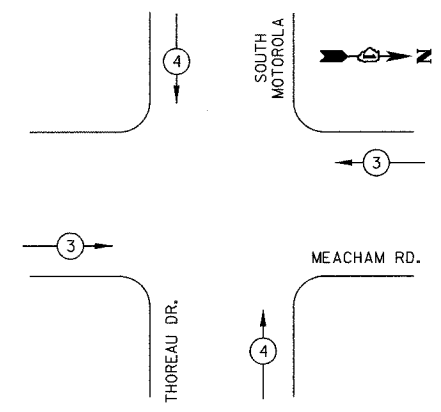
**TEMPORARY CONTROLLER SEQUENCE**  
M.O.T. STAGE IV THRU FINAL STAGE



- LEGEND**
- (\*) DUAL ENTRY PHASE
  - (\*) SINGLE ENTRY PHASE
  - (A) OL OVERLAP
  - (\*) PEDESTRIAN PHASE
  - \* NUMBER REFERS TO ASSOCIATED PHASE

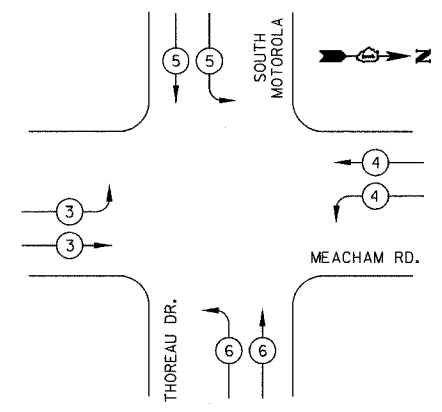
**TEMPORARY PHASE DESIGNATION DIAGRAM**

**PROPOSED EMERGENCY VEHICLE PREEMPTION SEQUENCE**  
EXISTING PHASING, M.O.T. STAGE 1 THRU STAGE III-B



**TEMPORARY PHASE DESIGNATION DIAGRAM**

**PROPOSED EMERGENCY VEHICLE PREEMPTION SEQUENCE**  
M.O.T. STAGE IV THRU FINAL STAGE



**PROPOSED EMERGENCY VEHICLE PREEMPTORS**

|                             |   |   |
|-----------------------------|---|---|
| EMERGENCY VEHICLE PREEMPTOR | 3 | 4 |
| MOVEMENT                    | → | ↑ |

**PROPOSED EMERGENCY VEHICLE PREEMPTORS**

|                             |   |   |   |   |
|-----------------------------|---|---|---|---|
| EMERGENCY VEHICLE PREEMPTOR | 3 | 4 | 5 | 6 |
| MOVEMENT                    | → | ← | ↓ | ↑ |

**TEMPORARY CABLE PLAN LEGEND**

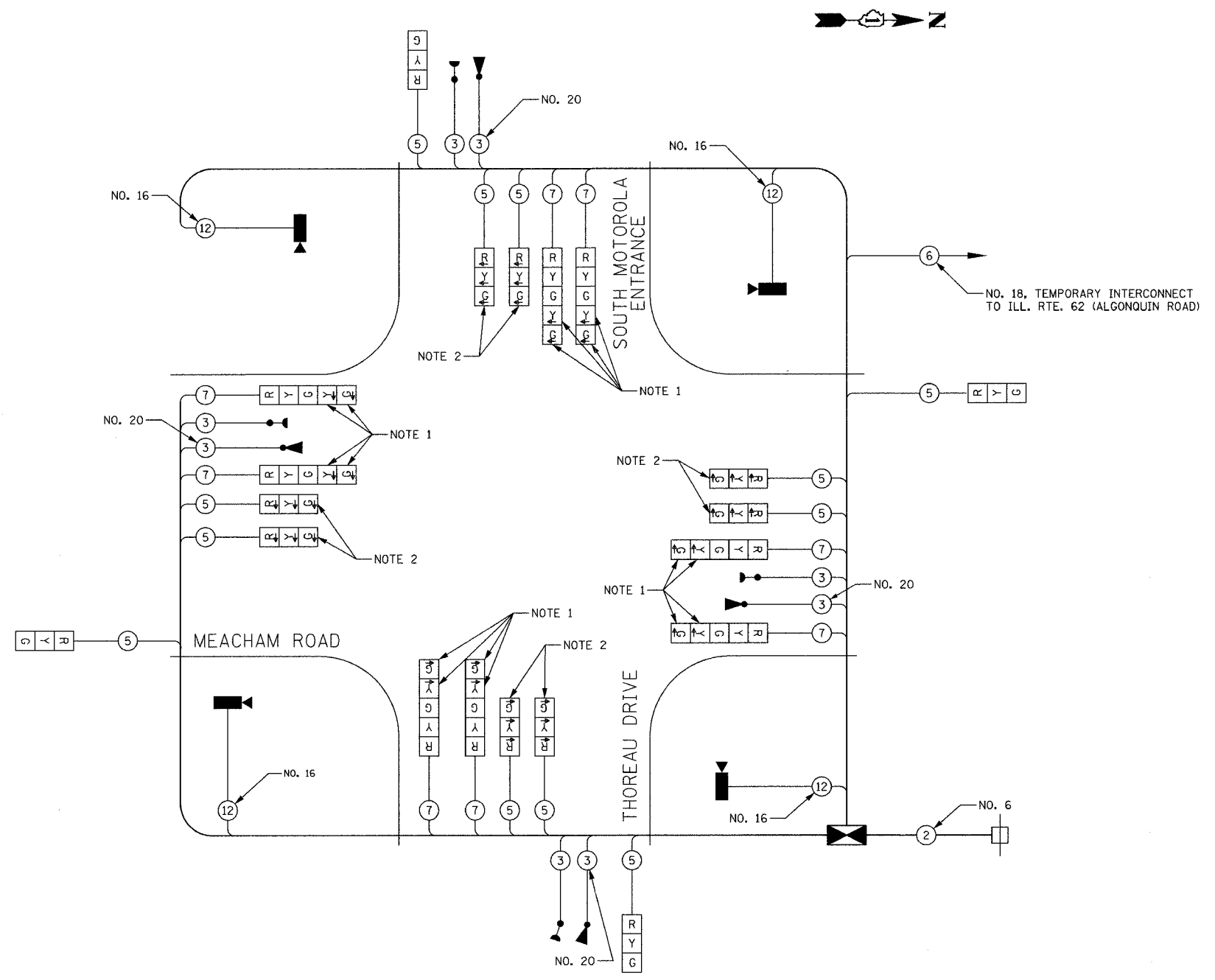
- (R) TEMPORARY TRAFFIC SIGNAL SECTION OR PEDESTRIAN SIGNAL SECTION 12" (300mm)
- (C) CONTROLLER CABINET
- (S) SERVICE INSTALLATION
- (5) INDICATES NUMBER OF CONDUCTORS IN CABLE. ALL CONDUCTORS TO BE NUMBER 14 AWG WIRE UNLESS OTHERWISE NOTED
- (B) CONFIRMATION BEACON
- (E) EMERGENCY VEHICLE LIGHT DETECTOR
- (V) VEHICLE DETECTOR, INDUCTION LOOP
- (P) PEDESTRIAN PUSHBUTTON DETECTOR
- (12) 12" (300mm) PEDESTRIAN SIGNAL SECTION
- (T) TELEPHONE CONNECTION
- (I) PROPOSED IMAGE SENSOR

**I.D.O.T. TRAFFIC SIGNAL INSTALLATION ELECTRICAL SERVICE REQUIREMENTS**

| TYPE          | NO. LAMPS | WATTAGE INCAND. | WATTAGE LED | % OPERATION | TOTAL WATTAGE |
|---------------|-----------|-----------------|-------------|-------------|---------------|
| SIGNAL (RED)  | 20        | 135             |             | 0.50        | 1350          |
| (YELLOW)      | 12        | 135             |             | 0.25        | 405           |
| (GREEN)       | 12        | 135             |             | 0.25        | 405           |
| ARROW         | 16        | 135             |             | 0.10        | 216           |
| CONTROLLER    | 1         | 100             |             | 1.00        | 100           |
| VIDEO SYSTEMS | 1         | 150             |             | 1.00        | 150           |
| FLASHER       |           |                 |             | 0.50        |               |
| TOTAL =       |           |                 |             |             | 2626          |

ENERGY COSTS TO: VILLAGE OF SCHAUMBURG  
101 SCHAUMBURG COURT  
SCHAUMBURG, IL 60197-1899

ENERGY SUPPLY: CONTACT: SAM THOMAS  
PHONE: 630-891-7118  
COMPANY: COM ED



**CABLE PLAN**  
NOT TO SCALE

- NOTE 1:** THESE SECTIONS SHALL BE BAGGED AND THE PROTECTED/PERMITTED LEFT TURN PHASE BE DISCONNECTED UPON THE COMPLETION OF M.O.T. STAGE III-B.
- NOTE 2:** THESE SIGNAL HEADS, AND CORRESPONDING "LEFT ON GREEN ARROW ONLY" SIGNS SHALL BE INSTALLED AFTER THE COMPLETION OF M.O.T. STAGE III-B AND PRIOR TO THE START OF M.O.T. STAGE IV.

**NOTE:**  
THE TRAFFIC SIGNAL CONTROLLER EQUIPMENT FOR THIS PROJECT SHALL BE "ECONOLITE" TO MATCH THE EXISTING ADJACENT SYSTEM.

**REVISIONS**

| NAME | DATE |
|------|------|
|      |      |
|      |      |
|      |      |
|      |      |
|      |      |
|      |      |
|      |      |
|      |      |
|      |      |

ILLINOIS DEPARTMENT OF TRANSPORTATION

**TEMPORARY CABLE PLAN AND TEMPORARY PHASE DESIGNATION DIAGRAM**

MEACHAM ROAD & THOREAU DRIVE / SOUTH MOTOROLA DRIVEWAY

NOT TO SCALE  
DATE 12/20/04

DESIGNED BY JJE  
CHECKED BY KMM