

**TEMPORARY TRAFFIC SIGNAL LEGEND**

- ← TEMPORARY TRAFFIC SIGNAL HEAD  
SPAN WIRE MOUNTED ORIGINAL LOCATION
- ↖ TEMPORARY TRAFFIC SIGNAL HEAD  
SPAN WIRE MOUNTED SECONDARY LOCATION
- ⊗ TEMPORARY WOOD POLE  
(SEE NOTE B)
- ⊠ TEMPORARY CONTROLLER CABINET
- TEMPORARY SPAN WIRE, TETHER WIRE, AND  
CABLE
- TEMPORARY SERVICE INSTALLATION
- ⊣ TEMPORARY PEDESTRIAN SIGNAL HEAD,  
BRACKET MOUNTED
- ⊣ IMAGE SENSOR
- ⊙ PEDESTRIAN PUSHBUTTON DETECTOR
- ⊣ EMERGENCY VEHICLE LIGHT DETECTOR
- ⊣ CONFIRMATION BEACON
- VEHICLE DETECTOR, INDUCTION LOOP
- u UNIT DUCT
- G.S. CONDUIT IN TRENCH (T) OR PUSHED (P)
- ⊣ HANDHOLE
- ⊣ HEAVY-DUTY HANDHOLE
- CT COMMON TRENCH

**EXISTING EQUIPMENT TO BE REMOVED LEGEND**

- ⊣ EXISTING SIGNAL HEAD TO BE REMOVED
- "E" ⊣ EXISTING SERVICE INSTALLATION TO BE REMOVED
- EXISTING SIGNAL POST AND FOUNDATION TO BE REMOVED
- ⊣ EXISTING ALUMINUM MAST ARM POLE AND FOUNDATION TO BE REMOVED
- "E" ⊣ EXISTING CONTROLLER AND FOUNDATION TO BE REMOVED
- "E" ⊣ EXISTING HANDHOLE TO BE REMOVED
- ⊣ EXISTING PEDESTRIAN SIGNAL HEAD TO BE REMOVED
- ⊙ EXISTING PEDESTRIAN PUSH-BUTTON TO BE REMOVED
- ⊣ EXISTING EMERGENCY VEHICLE SYSTEM DETECTOR TO BE REMOVED
- ⊣ EXISTING CONFIRMATION BEACON TO BE REMOVED
- "E" ⊣ EXISTING HEAVY DUTY HANDHOLE TO BE REMOVED
- ⊣ EXISTING STEEL MAST ARM POLE AND FOUNDATION TO BE REMOVED
- "E" ⊣ EXISTING JUNCTION BOX TO BE REMOVED

PROPOSED PAVEMENT (TYP.) INCLUDED IN REMOVAL ITEMS FOR MEACHAM/THOREAU INTERSECTION

EXISTING PAVEMENT (TYP.)

**MEACHAM ROAD**

THE FOLLOWING EXISTING TRAFFIC SIGNAL EQUIPMENT SHALL BE REMOVED BY THE CONTRACTOR, SHALL REMAIN THE PROPERTY OF THE VILLAGE OF SCHAUMBURG AND SHALL BE DELIVERED BY THE CONTRACTOR TO THE VILLAGE AS PER THE TRAFFIC SIGNAL SPECIFICATIONS.

- 1 EACH LIGHT DETECTOR AMPLIFIER
- 2 EACH LIGHT DETECTOR

THE FOLLOWING ITEMS SHALL BE REMOVED BY THE CONTRACTOR AND SHALL BE DISPOSED OF BY THEM OUTSIDE THE RIGHT-OF-WAY AT THEIR EXPENSE. THE SALVAGE VALUE OF THE REMOVED EQUIPMENT SHALL BE REFLECTED IN THE CONTRACT BID PRICE.

- 1 EACH SIGNAL HEAD, 1-FACE, 3-SECTION
- 3 EACH SIGNAL HEAD, 1-FACE, 5-SECTION
- 1 EACH SIGNAL HEAD, 2-FACE, 1-3 SECTION, 1-4 SECTION
- 1 EACH SIGNAL HEAD, 2-FACE, 4-SECTION
- 1 EACH SIGNAL HEAD, 3-FACE, 1-3 SECTION, 1-4 SECTION, 1-5 SECTION
- 2 EACH SIGNAL HEAD, 3-FACE, 1-3 SECTION, 2-5 SECTION
- 4 EACH PEDESTRIAN SIGNAL HEAD, 1-FACE
- 1 EACH PEDESTRIAN SIGNAL HEAD, 2-FACE
- 2 EACH TRAFFIC SIGNAL BACKPLATE
- 2 EACH ALUMINUM MAST ARM AND POLE
- 6 EACH SIGNAL POST
- 1 EACH SERVICE INSTALLATION

PEDESTRIAN SIGNAL HEADS SHALL BE BAGGED WHEN DEDICATED CROSSWALK IS NOT PROVIDED.

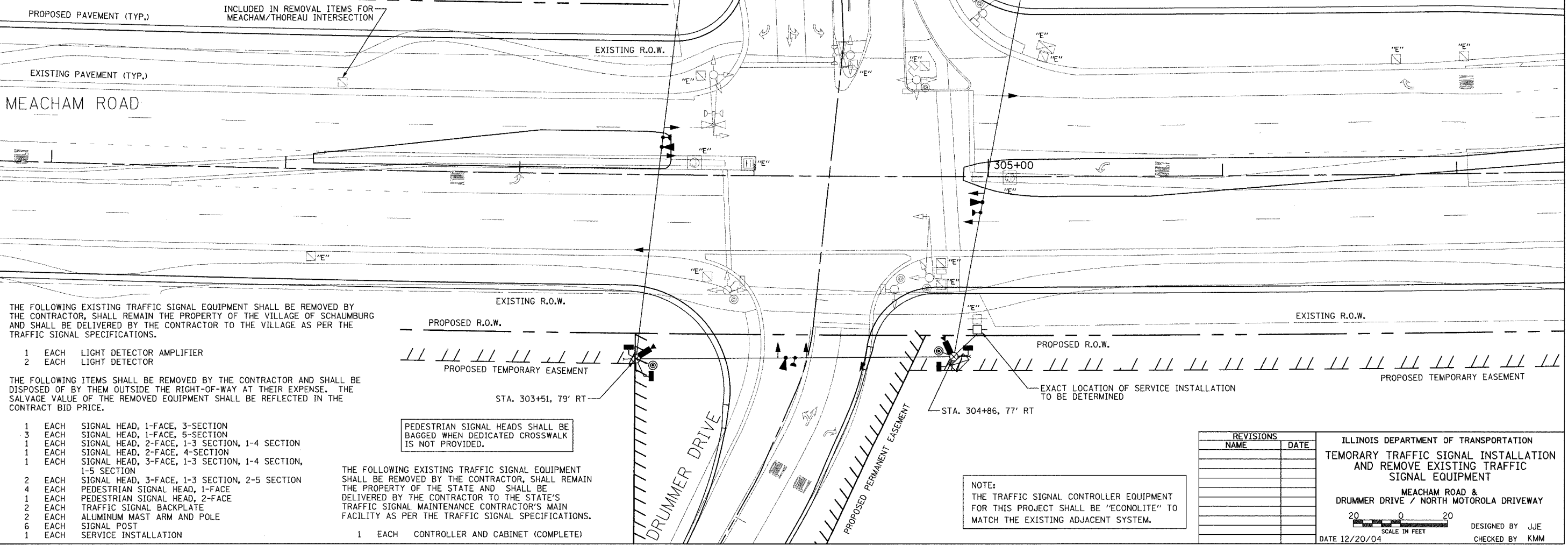
THE FOLLOWING EXISTING TRAFFIC SIGNAL EQUIPMENT SHALL BE REMOVED BY THE CONTRACTOR, SHALL REMAIN THE PROPERTY OF THE STATE AND SHALL BE DELIVERED BY THE CONTRACTOR TO THE STATE'S TRAFFIC SIGNAL MAINTENANCE CONTRACTOR'S MAIN FACILITY AS PER THE TRAFFIC SIGNAL SPECIFICATIONS.

- 1 EACH CONTROLLER AND CABINET (COMPLETE)

**NOTES FOR TEMPORARY TRAFFIC SIGNALS**

1. ALL CONTROL EQUIPMENT INCLUDING EMERGENCY PRE-EMPTION AND COMMUNICATION DEVICES FOR THE TEMPORARY TRAFFIC SIGNAL(S) SHALL BE FURNISHED BY THE CONTRACTOR.
2. ONLY CONTROLLERS SUPPLIED BY ONE OF THE DISTRICT APPROVED CLOSED LOOP EQUIPMENT MANUFACTURERS WILL BE APPROVED FOR USE AT TEMPORARY SIGNAL LOCATIONS. ALL CONTROLLERS USED FOR TEMPORARY TRAFFIC SIGNALS SHALL BE FULLY ACTUATED NEMA MICROPROCESSOR BASED WITH RS232 DATA ENTRY PORTS COMPATIBLE WITH EXISTING MONITORING SOFTWARE APPROVED BY IDOT DISTRICT 1, INSTALLED IN A NEMA TS1 OR TS2 CABINET. ONLY ONE BRAND OF CONTROLLER WILL BE ACCEPTED FOR ANY ONE CONTRACT.
3. ALL TRAFFIC SIGNAL SECTIONS AND PEDESTRIAN SIGNAL SECTIONS SHALL BE 12". HEADS SHALL BE PLACED AS INDICATED ON THE TEMPORARY TRAFFIC SIGNAL PLAN OR AS DIRECTED BY THE ENGINEER. THE CONTRACTOR SHALL FURNISH ENOUGH CABLE SLACK TO RELOCATE HEADS TO ANY POSITION ON THE SPAN WIRE OR AT LOCATIONS ILLUSTRATED ON THE PLANS FOR CONSTRUCTION STAGING. THE TEMPORARY TRAFFIC SIGNAL SHALL REMAIN IN OPERATION DURING ALL SIGNAL HEAD RELOCATIONS. EACH TEMPORARY TRAFFIC SIGNAL HEAD SHALL HAVE ITS OWN CABLE FROM THE CONTROLLER CABINET TO THE SIGNAL HEAD.
4. ALL EXISTING STREET NAME AND INTERSECTION REGULATORY SIGNS SHALL BE REMOVED FROM EXISTING POLES, RELOCATED AND SECURELY FASTENED TO THE SIGNAL SPAN WIRE OR WOOD POLE AS DIRECTED BY THE ENGINEER.
5. ANY TEMPORARY SIGNAL WITHIN AN EXISTING CLOSED LOOP TRAFFIC SIGNAL SYSTEM SHALL BE INTERCONNECTED TO THAT SYSTEM USING SIMILAR BRAND CONTROL EQUIPMENT.
6. THE TEMPORARY TRAFFIC SIGNAL SHALL HAVE THE SIGNAL HEAD DISPLAYS, SIGNAL HEAD PLACEMENTS AND CONTROLLER PHASING MATCH THE EXISTING TRAFFIC SIGNAL, AT THE TIME OF THE TURN ON, IF NO TRAFFIC STAGING IS IN PLACE OR WILL NOT BE STAGED ON THE DAY OF THE TURN ON.
7. ALL DIMENSIONS AND OFFSETS ARE DIMENSIONED FROM THE CENTERLINE OF MEACHAM ROAD.
8. TEMPORARY WOOD POLES SHALL BE OF A SUFFICIENT HEIGHT TO MOUNT A TEMPORARY LUMINAIRE AT A HEIGHT OF 45 FEET.

F.A.U. RTE.	SECTION	COUNTY	TOTAL SHEETS	SHEET NO.
2585 00-00068-01-WR		COOK	145	85
STA. XXX+XX	TO STA. XXX+XX			
FED. ROAD DIST. NO.	ILLINOIS	FED. AID PROJECT		
CONTRACT NUMBER 83785				



REVISIONS	
NAME	DATE

ILLINOIS DEPARTMENT OF TRANSPORTATION  
**TEMPORARY TRAFFIC SIGNAL INSTALLATION AND REMOVE EXISTING TRAFFIC SIGNAL EQUIPMENT**  
 MEACHAM ROAD & DRUMMER DRIVE / NORTH MOTOROLA DRIVEWAY  
 SCALE IN FEET  
 DATE 12/20/04  
 DESIGNED BY JJE  
 CHECKED BY KMM

NOTE:  
 THE TRAFFIC SIGNAL CONTROLLER EQUIPMENT FOR THIS PROJECT SHALL BE "ECONOLITE" TO MATCH THE EXISTING ADJACENT SYSTEM.