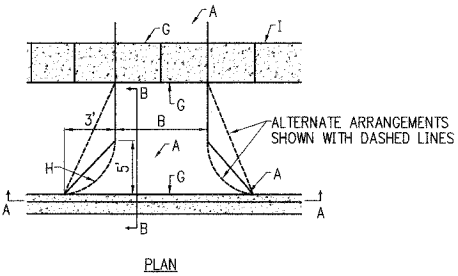
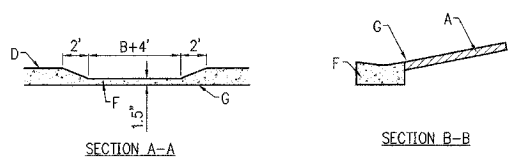
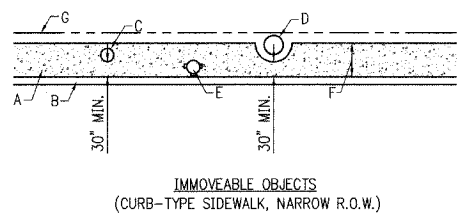


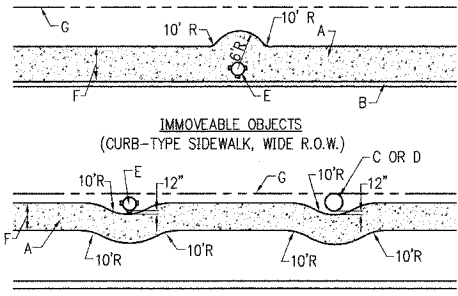
F.A.P. RTE.	SECTION	COUNTY	TOTAL SHEETS	SHEET NO.
0311	03-0090-00-SW	DU PAGE	-	13
FEDERAL RD. DIST. NO.	ILLINOIS	FEDERAL AID PROJECT		
CONTRACT: 83787				



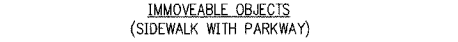
**RESIDENTIAL DRIVEWAY DETAIL**  
N.T.S.



**IMMOVABLE OBJECTS**  
(CURB-TYPE SIDEWALK, NARROW R.O.W.)

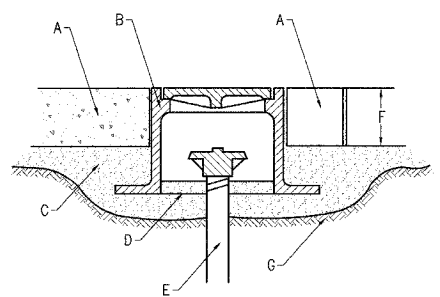


**IMMOVABLE OBJECTS**  
(CURB-TYPE SIDEWALK, WIDE R.O.W.)



**IMMOVABLE OBJECTS**  
(SIDEWALK WITH PARKWAY)

**SIDEWALK OBSTRUCTIONS**  
N.T.S.



**SERVICE BOX INSTALLATION IN PAVEMENT AREAS**  
N.T.S.

**CONSTRUCTION NOTES**

- A. FOR CONCRETE DRIVEWAYS, MIN. 5" P.C.C. OVER A MIN. 2" AGGREGATE BASE. FOR ASPHALT DRIVEWAYS, MIN. 2" BITUMINOUS CONCRETE OVER A MIN. 8" AGGREGATE BASE.
- B. MIN. WIDTH 10', MAX. 24'
- C. CURB & GUTTER
- D. TOP OF CURB
- E. FLOWLINE OF GUTTER
- F. DEPRESSED TYPE CURB & GUTTER
- G. 3/4" EXPANSION JOINT REQUIRED FOR CONCRETE DRIVEWAYS ONLY.
- H. 5' RADIUS
- I. P.C.C. SIDEWALK, SEE NOTE 2.

**GENERAL NOTES**

1. FOR CONCRETE DRIVEWAYS WIDER THAN 14', A CONTRACTION JOINT SHALL BE LOCATED ALONG THE CENTERLINE OF THE DRIVEWAY.
2. SIDEWALK SHALL BE A MINIMUM OF 5" THICK.
3. 6-BAG MIX CONCRETE SHALL BE USED FOR CONCRETE DRIVEWAYS, SIDEWALKS, AND CURB & GUTTER.

**CONSTRUCTION NOTE:**

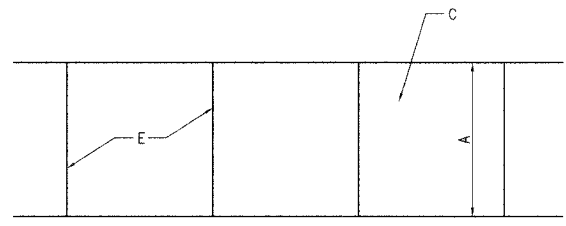
- A. SIDEWALK
- B. CURB
- C. SERVICE POLE, SEE NOTES 1 AND 3.
- D. TREE TRUNK, SEE NOTE 1
- E. FIRE HYDRANT, SEE NOTES 1, 2, AND 3.
- F. SIDEWALK WIDTH.
- G. RIGHT-OF-WAY (R.O.W.)

**GENERAL NOTES:**

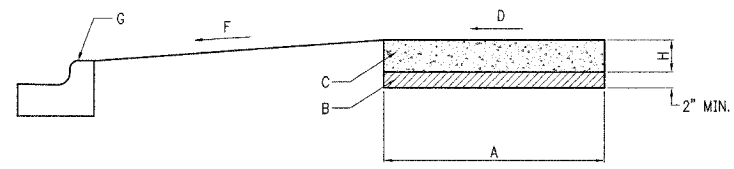
1. A FIRE HYDRANT, SERV. POLE OR TREE TRUNK SHALL BE CONSIDERED IMMOVABLE ONLY WHEN DIRECTED BY THE VILLAGE ENGINEER.
2. THE VILLAGE OF WESTMONT WATER DEPT. SHALL BE CONTACTED AS SOON AS POSSIBLE WHENEVER A FIRE HYDRANT IS FOUND TO BE IN THE PATH OF A NEW SIDEWALK, SO THAT THE FIRE HYDRANT CAN BE RELOCATED, IF POSSIBLE.
3. WHEN A SERVICE POLE OR FIRE HYDRANT IS LOCATED WITHIN THE SIDEWALK AREA, AND IS CONSIDERED IMMOVABLE, A 1/2" EXPANSION JOINT SHALL BE INSTALLED ENCIRCLING THE OBJECT.

**CONSTRUCTION NOTES:**

- A. STAMPED CONCRETE PAVEMENT OR CONCRETE BRICK PAVERS.
- B. FOR CONCRETE-ROUND FRAME SHALL BE EQUIVALENT TO TYLER 6895 VALVE BOX. FOR BRICK PAVERS-SQUARE FRAME SHALL BE EQUIVALENT TO NEENAH B-1978-1 INSPECTION FRAME.
- C. COMPACTED AGGREGATE BASE, MIN. 2".
- D. SERVICE BOX LID WITH BRASS PENTAGON HEAD PLUG, TOP TO BE MARKED "WATER".
- E. SERVICE BOX EXTENSION.
- F. SERVICE BOX SET 4"-6" BELOW FINISHED GRADE.
- G. SUBGRADE.



**PLAN**



**PROFILE**

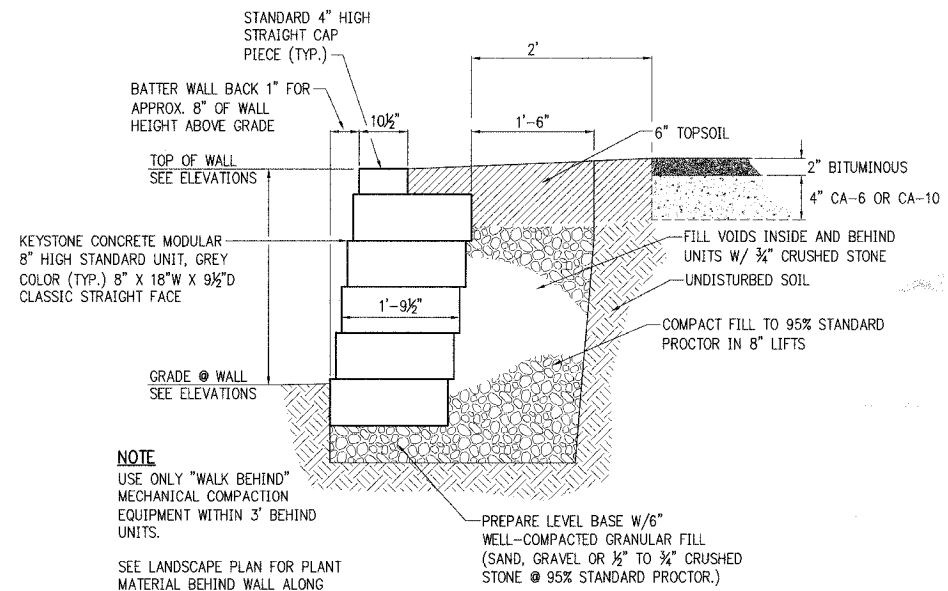
**SIDEWALK DETAIL**

**CONSTRUCTION NOTES**

- A. 5' NORMAL WIDTH OR AS INDICATED ON PLANS
- B. CRUSHED STONE OR GRAVEL BASE
- C. P.C.C. SIDEWALK
- D. SLOPE 1/4" PER FOOT TO STREET SIDE, OR AS NOTED ON PLAN
- E. JOINTS, SEE NOTES 3 AND 4
- F. SLOPE 2% TO 8% TOWARDS STREET
- G. CURB AND GUTTER
- H. CONCRETE THICKNESS, SEE NOTE 1

**GENERAL NOTES**

1. STANDARD THICKNESS OF CONCRETE SHALL BE A MINIMUM OF 5".
2. WHERE WOODEN FORMS ARE USED, 2x4'S ARE NOT ALLOWED. ONLY 2x6'S SHALL BE USED.
3. PREFORMED 3/4" EXPANSION JOINTS SHALL BE CONSTRUCTED AT MAX. SPACING OF 40'.
4. FORMED OR SAW-CUT CONTRACTION JOINTS SHALL BE SPACED GENERALLY 5' APART, BUT NO LESS THAN 4' AND NO MORE THAN 6'.
5. 1/2" EXPANSION JOINTS SHALL BE INSTALLED WHERE SIDEWALK ABUTS BUILDINGS, TRAFFIC SIGNAL FOUNDATIONS, SERVICE POLES, AND OTHER IMMOVABLE STRUCTURES.
6. CONCRETE TO BE MINIMUM 6-BAG MIX.



**MODULAR BLOCK RETAINING WALL TYPICAL SECTION**  
NOT TO SCALE

**NOTE**

USE ONLY "WALK BEHIND" MECHANICAL COMPACTION EQUIPMENT WITHIN 3' BEHIND UNITS.  
SEE LANDSCAPE PLAN FOR PLANT MATERIAL BEHIND WALL ALONG NORTH SIDE OF NEW ADDITION.  
PREPARE LEVEL BASE W/6" WELL-COMPACTED GRANULAR FILL (SAND, GRAVEL OR 1/2" TO 3/4" CRUSHED STONE @ 95% STANDARD PROCTOR.)

Scale For Microfilming  
Millimeters  
Inches

COPYRIGHT © 2004 BURNS AND MCDONNELL ENGINEERING COMPANY, INC.



date	12/18/03	detailed	J. HOLZINGER
designed	A. BRYANT	checked	



**VILLAGE OF WESTMONT**  
2003 CMAQ SIDEWALK MISCELLANEOUS DETAILS

project	35309	contract	
drawing		rev.	2

sheet 13 of 16 sheets  
file I:\WESTMONT\35309 2003 CMAQ SIDEWALK\CAD\BID\DETAILS