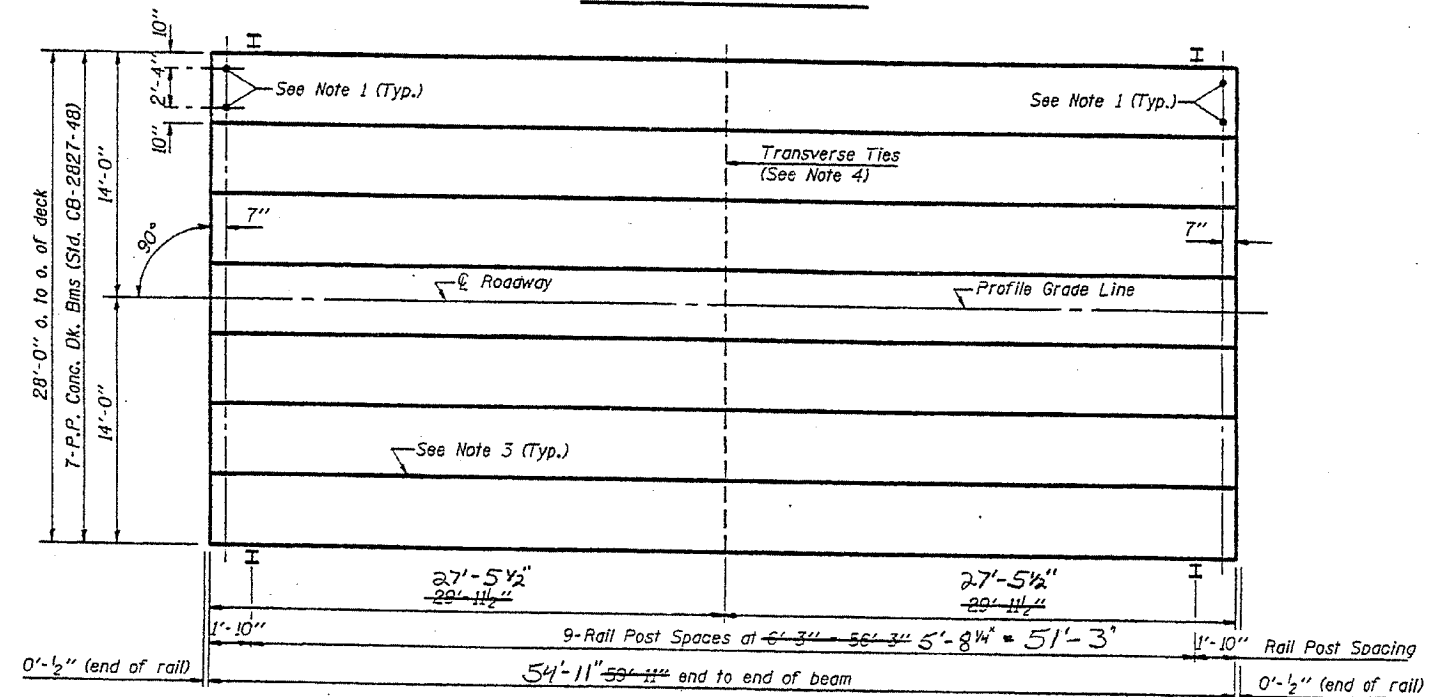
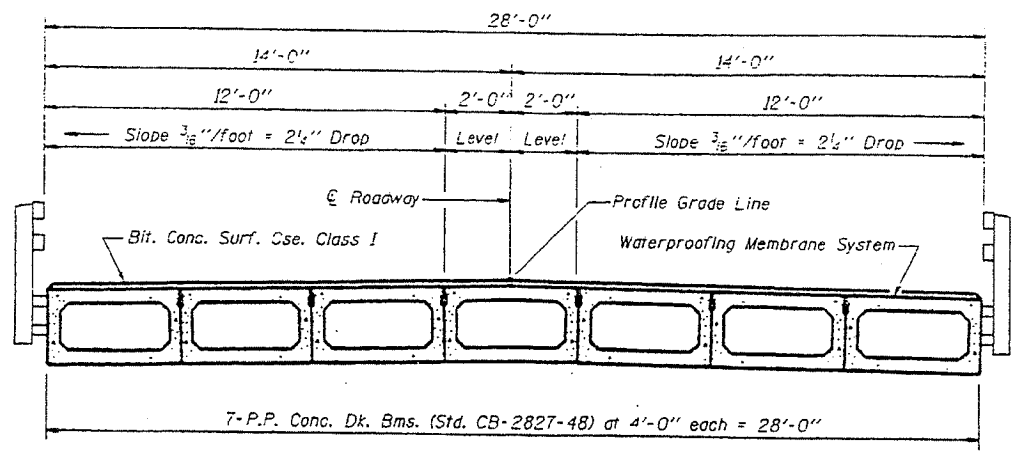


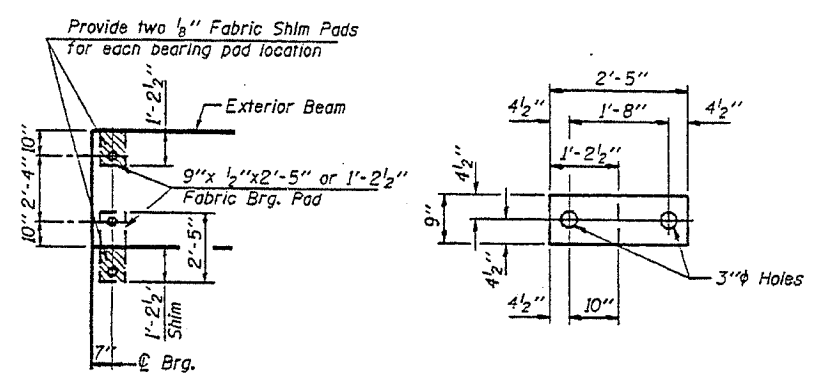
TYPICAL ELEVATIONS



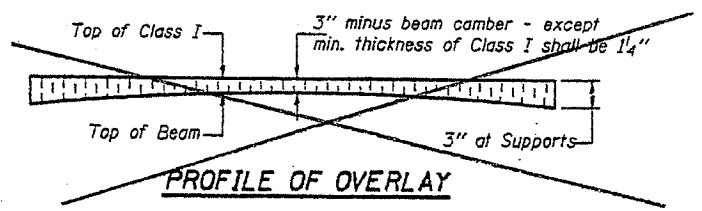
PLAN



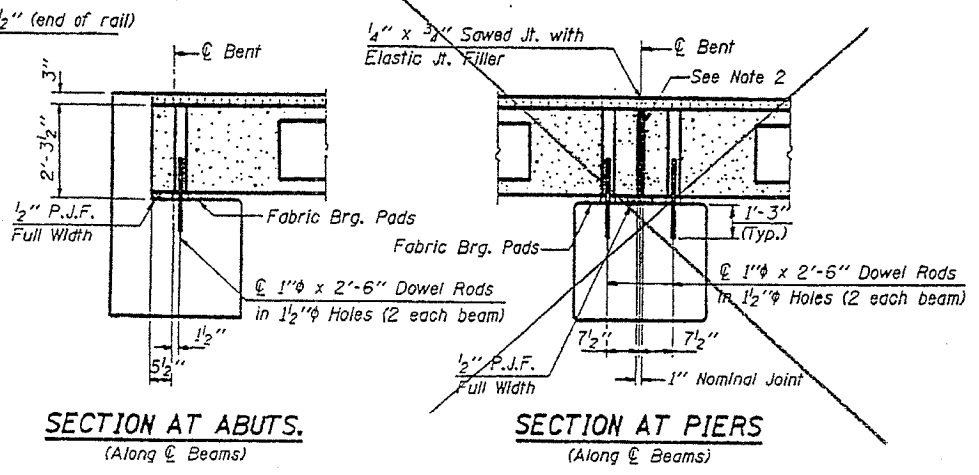
CROSS SECTION



1/2" FABRIC BRG. PAD DETAILS



PROFILE OF OVERLAY



SECTION AT ABUTS.  
(Along  $\bar{C}$  Beams)

SECTION AT PIERS  
(Along  $\bar{C}$  Beams)

NOTES

1. After beams have been erected, holes shall be drilled into substructure and anchor dowels placed. Dowel holes shall be filled with non-shrink grout to top of beam and allowed to cure min. 24 hrs. prior to grouting the shear keys.
2. Nominal 1" joint at  $\bar{C}$  Pier shall be filled with non-shrink grout.
3. Longitudinal keys shall be grouted.
4. The 1"  $\bar{\phi}$  rods in the transverse tie assembly shall be tightened to a snug fit and the threads set. Pockets that receive transverse tie bar outside shall be filled with grout after transverse tie assembly is in place.

QUANTITIES FOR ONE SPAN

P.P. Conc. Dk. Bm. 27" Dp.	1680-Sq. Ft.	1540 SF.
Steel Railing	110 FT	120 FT.
Bit. Conc. Surf. Cse. Class I	21.9 Tons	
Waterproofing Membrane System	186.7-Sq. Yds.	

P.P.C. DECK BEAM SUPERSTRUCTURE			
28' RDWY.	27" BMS.	55' SPAN	0° SKEW
STANDARD CS-2827-60			

Illinois Department of Transportation

PASSED NOVEMBER 1, 1995

*Ralph E. Anderson*  
Engineer of Bridge Design

APPROVED NOVEMBER 1, 1995

*Ralph E. Anderson*  
Engineer of Bridges and Structures