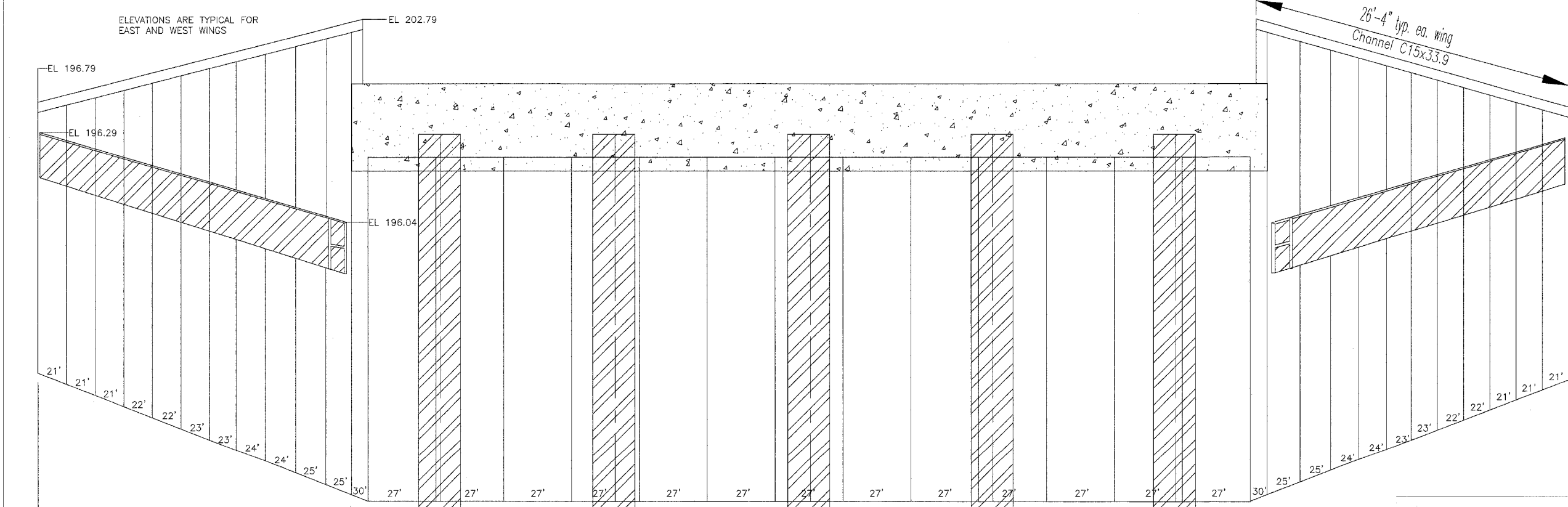


SHEET 14 OF 17



ELEVATIONS ARE TYPICAL FOR EAST AND WEST WINGS

26'-4" typ. ea. wing
Channel C15x33.9

Corner Sheet
(Typ. ea. cor.)

11 Shts @ 26.75"
= 24'-6 1/4"
(typ. ea. wing)

SHEET PILING TYPE SZ-22 -- 13 SHEETS x 26.75" = 28'-11 3/4"

NOTES: SHEET PILING SHOWN SHOULD NOT BE USED FOR LAYOUT. CONTRACTOR SHALL MAKE AN ACCURATE LAYOUT OF SHEETING WALL BEFORE STARTING, SO THAT ALL SHEETS, WALERS AND RODS WILL FIT AS PLANNED.

AFTER THE DECK HAS BEEN SET, THE CONTRACOR SHALL WELD A PIECE OF SHEETING TO THE CORNER SHEET ABOVE THE ABUTMENT TO CLOSE THE GAP BETWEEN THE CORNER SHEET AND THE EDGE OF THE DECK BEAM.
(COST INCIDENTAL TO STEEL SHEET PILING)

SHEET PILING DETAIL
SEC. 03-00284-00-BR
BUILT 2005, LEE COUNTY
STA. 10+00 THREE MILE BRANCH