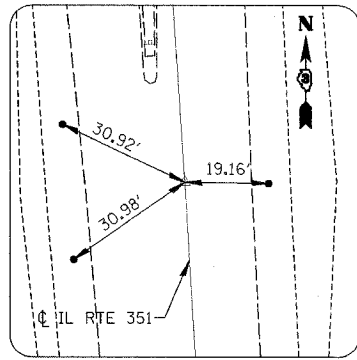


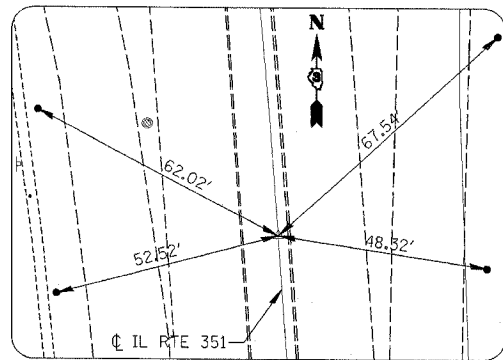
RTE.	SECTION	COUNTY	TOTAL SHEETS	SHEET NO.
FA80	(50-2)HBR	LA SALLE	460	31
STA.	TO STA.			
FED. ROAD DIST. NO.	ILLINOIS FED. AID PROJECT			

CONTRACT NO. 86603

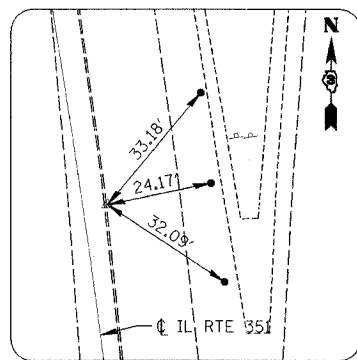
### IL RTE 351 $\oslash$ TIES



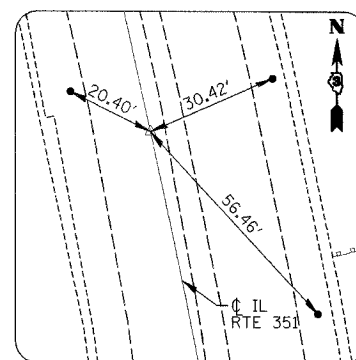
IL RTE 351 - PI STA. 48+00.00  
N. 48560.61 E. 65717.81



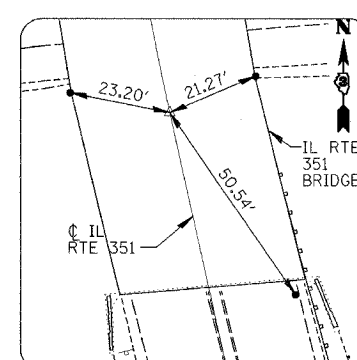
IL RTE 351 - PC STA. 55+94.48  
N. 49353.22 E. 65663.28



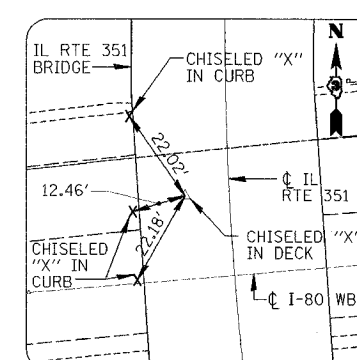
IL RTE 351 - PI STA. 57+43.18  
N. 49501.57 E. 65653.08



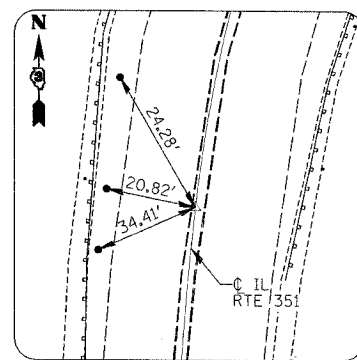
IL RTE 351 - PT STA. 58+91.32  
N. 49646.71 E. 65620.70



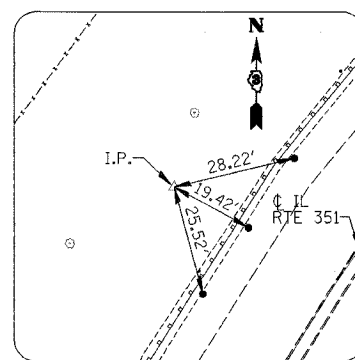
IL RTE 351 - PC STA. 61+72.83  
N. 49921.46 E. 65559.41



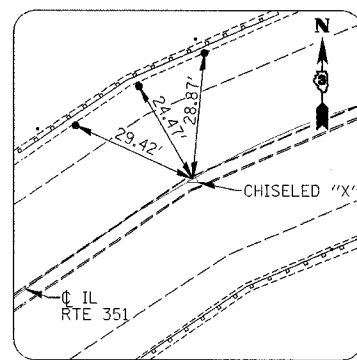
IL RTE 351 - PI STA. 62+94.31  
N. 50040.03 E. 65532.96



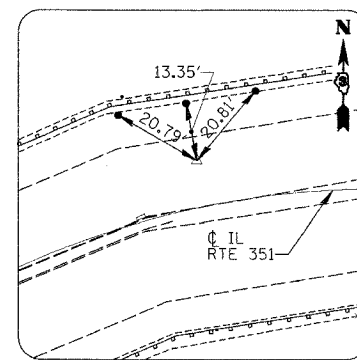
IL RTE 351 - PCC STA. 64+13.54  
N. 50160.73 E. 65546.78



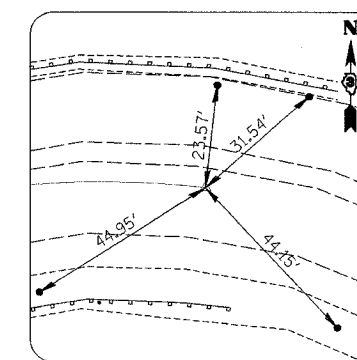
IL RTE 351 - PI STA. 65+95.23  
N. 50341.24 E. 65567.45



IL RTE 351 - PCC STA. 67+50.19  
N. 50432.14 E. 65724.76

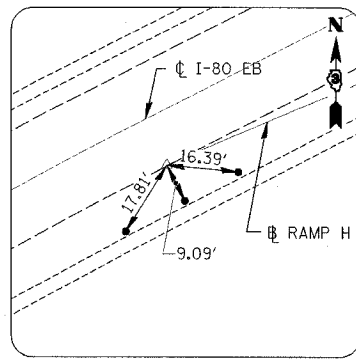


IL RTE 351 - PI STA. 68+15.68  
N. 50464.91 E. 65781.46

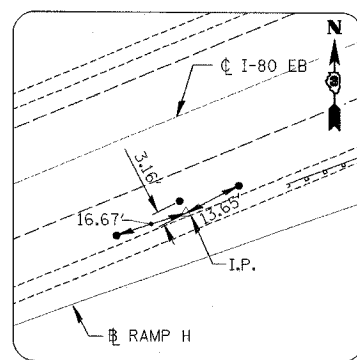


IL RTE 351 - PCC STA. 68+76.63  
N. 50457.18 E. 65846.49

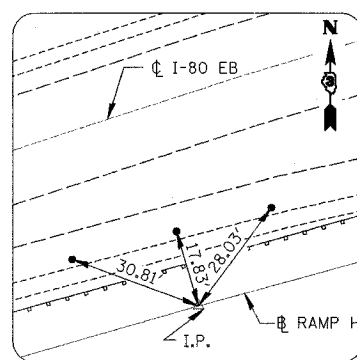
### RAMP H $\oslash$ TIES



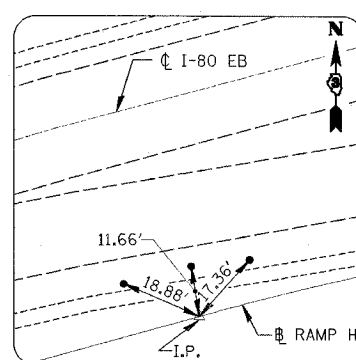
RAMP H - PCC STA. 262+46.67  
N. 49519.58 E. 64113.57



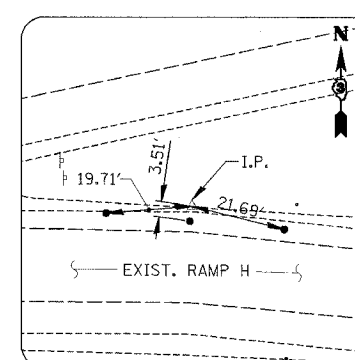
RAMP H - PI STA. 265+69.85  
N. 49648.34 E. 64410.00



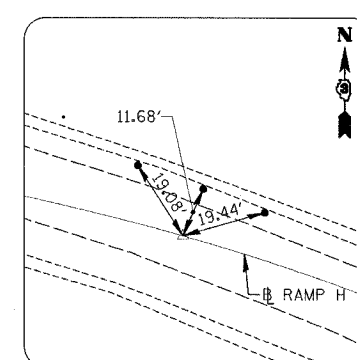
RAMP H - PT STA. 268+92.04  
N. 49735.79 E. 64721.13



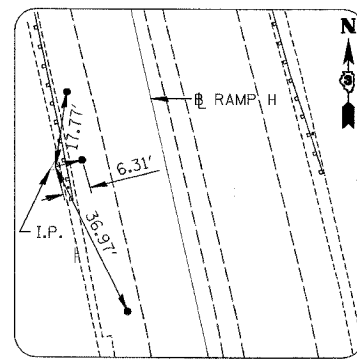
RAMP H - PC STA. 270+35.00  
N. 49774.01 E. 64858.88



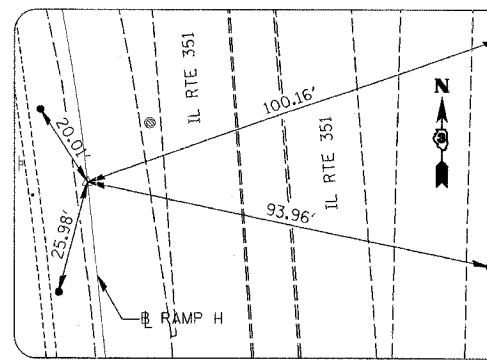
RAMP H - PI STA. 272+49.39  
N. 49832.02 E. 65065.27



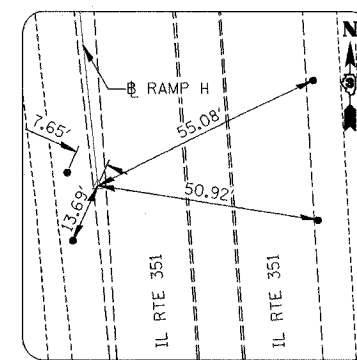
RAMP H - PCC STA. 274+53.21  
N. 49775.16 E. 65271.98



RAMP H - PI STA. 277+78.73  
N. 49688.82 E. 65585.84



RAMP H - PT STA. 280+24.16  
N. 49365.00 E. 65619.05



RAMP H - POT STA. 284+81.78  
N. 48909.77 E. 65665.72

NOTE: ALL CONTROL AND TIE POINTS ARE PK NAILS EXCEPT AS NOTED.

REVISIONS	NAME

ILLINOIS DEPARTMENT OF TRANSPORTATION

**TIES**

F.A.I. 80 AT ILLINOIS ROUTE 351

SCALE: NONE  
DATE: 09/04

DRAWN BY: JDC  
CHECKED BY: MTD