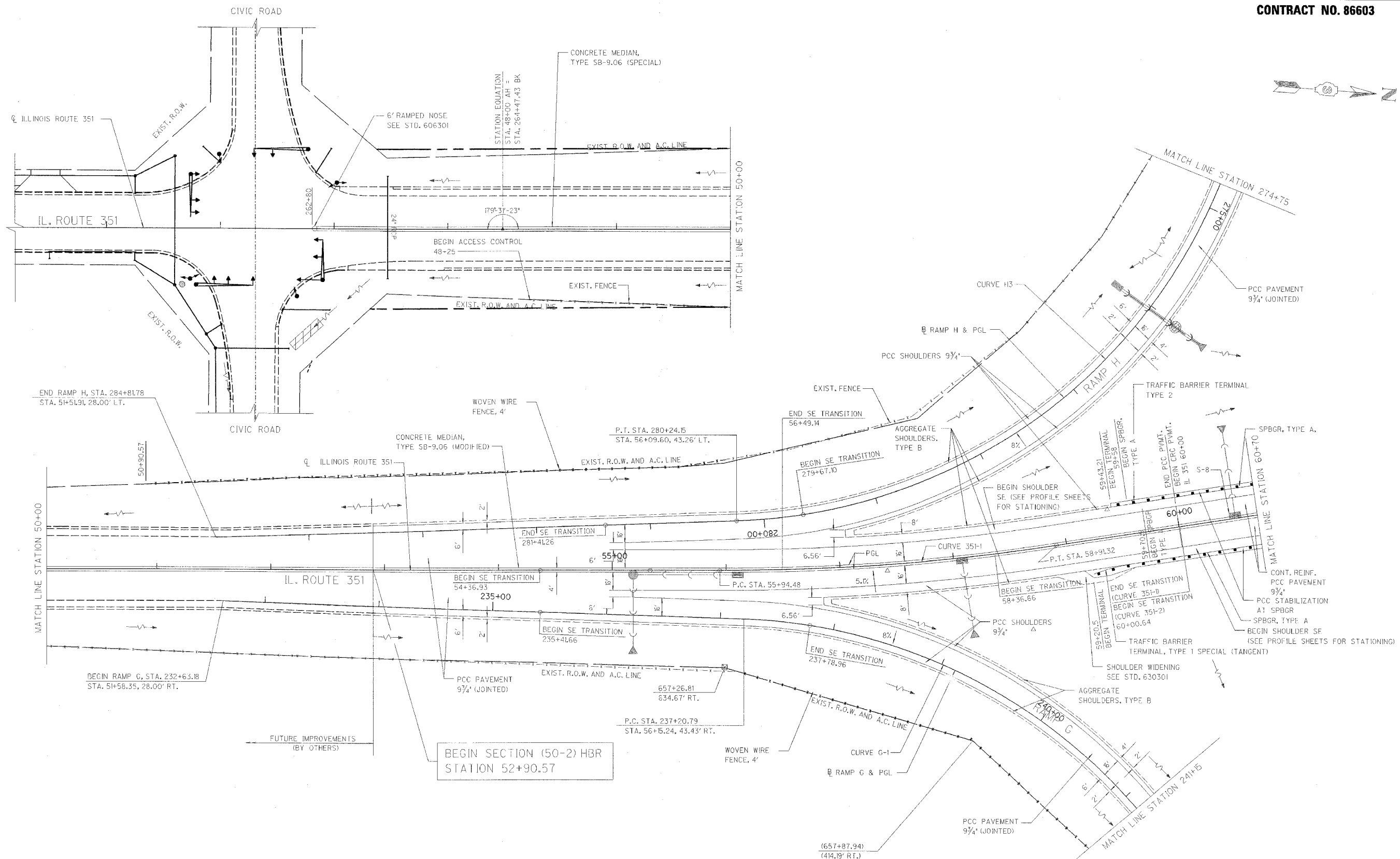


RTE.	SECTION	COUNTY	TOTAL SHEETS	SHEET NO.
FAI 80	150-2HBR	LA SALLE	40	43
STA. 46+75		TO STA. 60+70		
FED. ROAD DIST. NO.		ILLINOIS	FED. AID PROJECT	

**CONTRACT NO. 86603**



BEGIN SECTION (50-2) HBR  
STATION 52+90.57

REVISIONS	NAME	DATE

ILLINOIS DEPARTMENT OF TRANSPORTATION

**ROADWAY PLAN**

F.A.I. 80 AT ILLINOIS ROUTE 351  
STATION 46+75 TO STATION 60+70

DATE: 09/04  
DRAWN BY: JJK  
CHECKED BY: MTD

0 40 80  
SCALE IN FEET