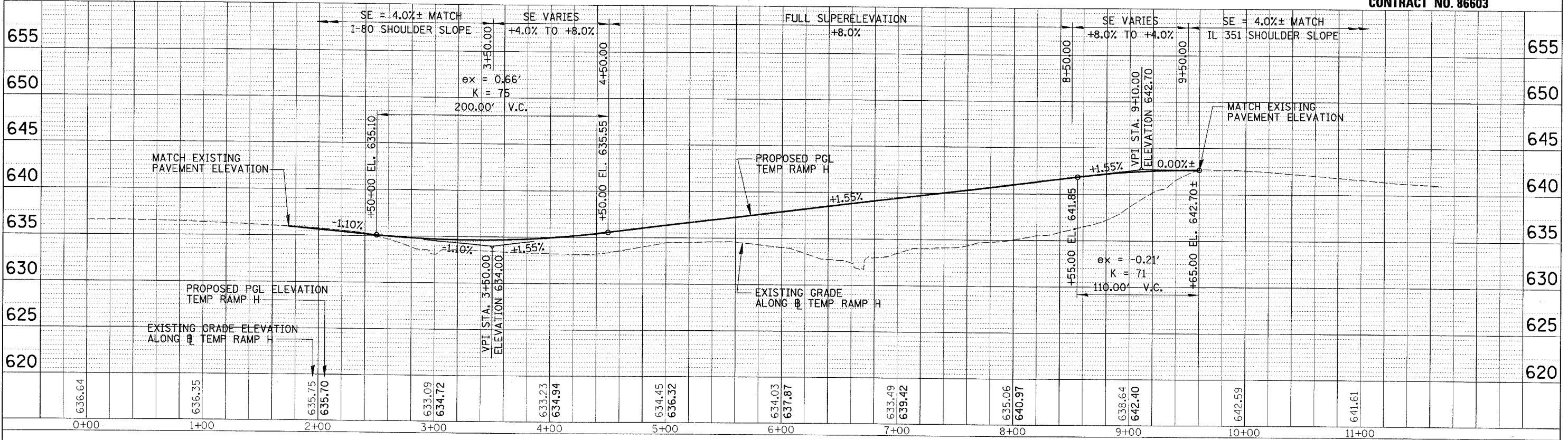


RTE.	SECTION	COUNTY	TOTAL SHEETS	SHEET NO.
FAI 80	(50-2)HBR	LA SALLE	460	50
STA. 0+00	TO STA. 11+68.78			
FED. ROAD DIST. NO.	ILLINOIS	FED. AID PROJECT		

TEMPORARY RAMP H PROFILE

CONTRACT NO. 86603



PLAN	SURVEYED	BY	DATE
	NOTED		
	GRADES CHECKED		
	BY		
	NO. OF WAYS CHECKED		
	DATE		
	NOTE BOOK NO.		
	FILE NAME		

PROFILE	SURVEYED	BY	DATE
	NOTED		
	GRADES CHECKED		
	BY		
	NO. OF WAYS CHECKED		
	DATE		
	NOTE BOOK NO.		
	FILE NAME		

REVISIONS	NAME	DATE

ILLINOIS DEPARTMENT OF TRANSPORTATION
TEMPORARY RAMP H PROFILE
 F.A.I. 80 @ ILLINOIS ROUTE 351

0 40 80
 SCALE IN FEET

DATE: 09/04
 DRAWN BY: MES
 CHECKED BY: MTD