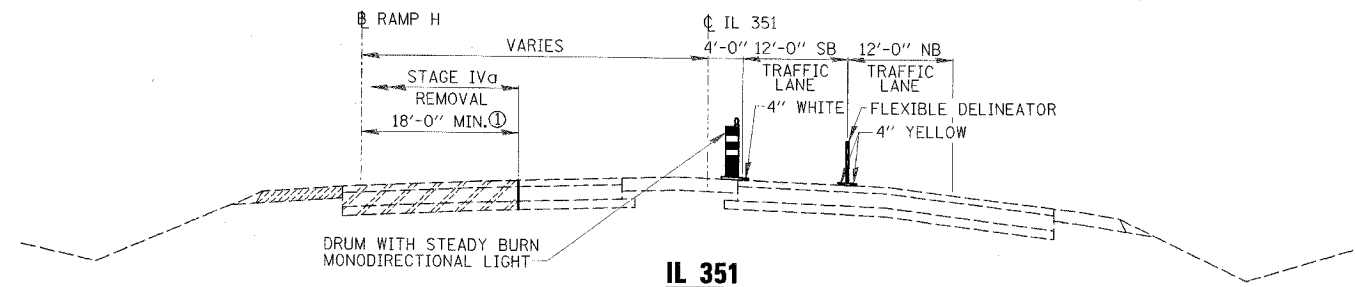
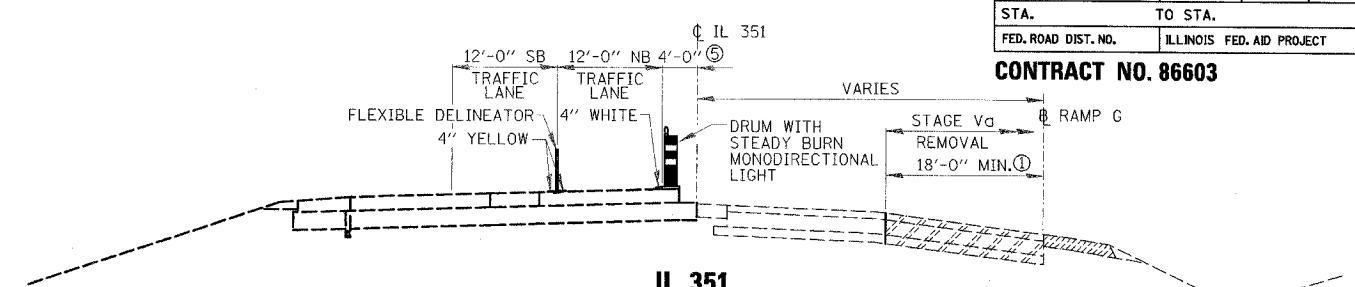


RTE.	SECTION	COUNTY	TOTAL SHEETS	SHEET NO.
FAIBO	(50-2)HBR	LA SALLE	460	53
STA.	TO STA.			
FED. ROAD DIST. NO.	ILLINOIS FED. AID PROJECT			

CONTRACT NO. 86603



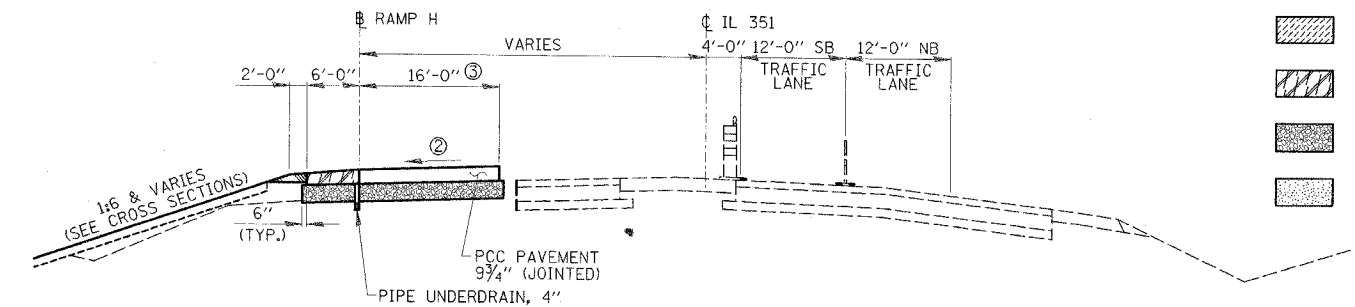
**IL 351
STAGE IVa REMOVAL
STA. 52+90.57 TO STA. 58+36.66**



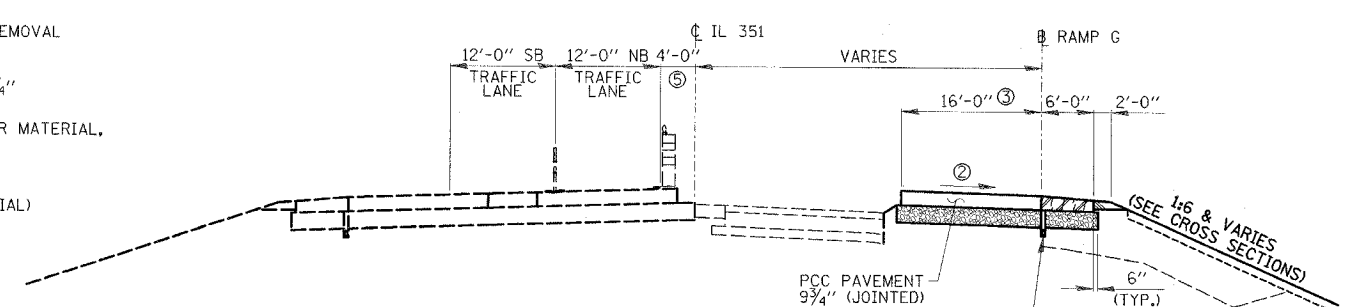
**IL 351
STAGE Va REMOVAL
STA. 52+90.57 TO STA. 58+36.66**

LEGEND

- AGGREGATE SHOULDERS, TYPE B
- PAVEMENT REMOVAL
- PAVED SHOULDER REMOVAL
- PCC SHOULDERS 9 3/4"
- SUB-BASE GRANULAR MATERIAL, TYPE A, 12"
- CONCRETE MEDIAN TYPE SB9.06 (SPECIAL)

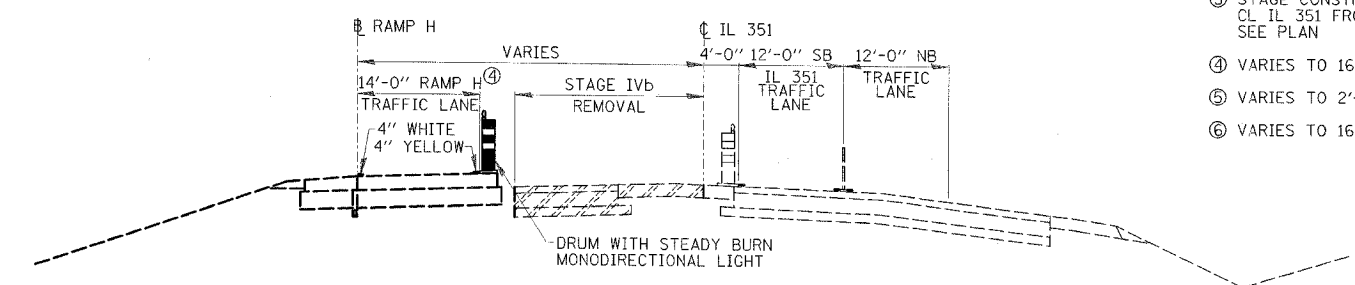


**IL 351
STAGE IVa CONSTRUCTION
STA. 52+90.57 TO STA. 58+36.66**

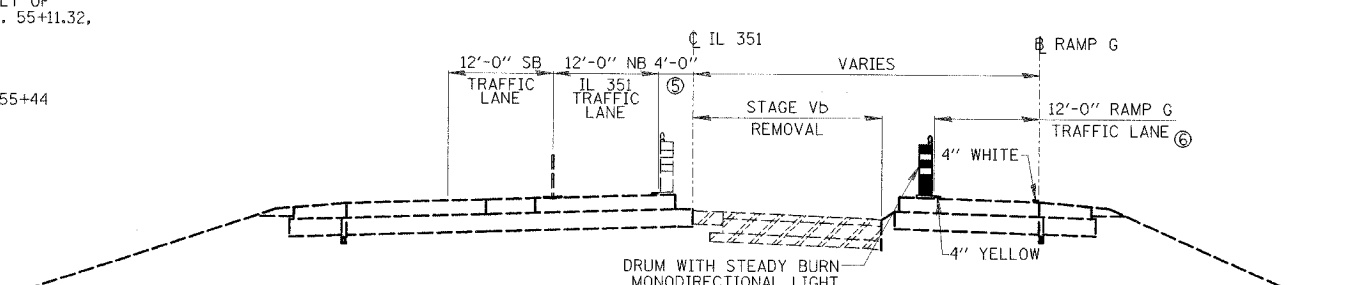


**IL 351
STAGE Va CONSTRUCTION
STA. 52+90.57 TO STA. 58+36.66**

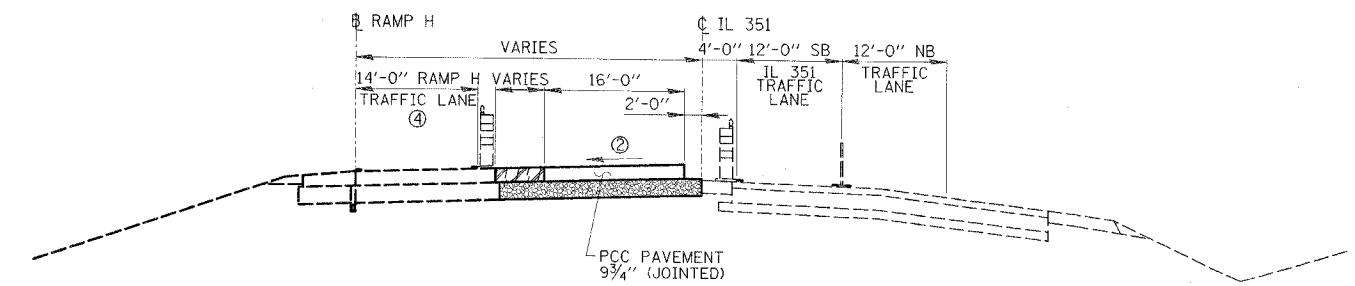
- ① STAGE REMOVAL LINE IS CL IL 351 FROM STA. 52+90.57 TO STA. 55+11.32, SEE PLAN.
- ② VARIES, SEE PROFILE SHEETS AND RAMP TERMINAL ELEVATIONS SHEETS FOR DETAILS.
- ③ STAGE CONSTRUCTION LINE IS 2' LT OF CL IL 351 FROM 52+90.57 TO STA. 55+11.32, SEE PLAN
- ④ VARIES TO 16'-0" ON RAMP H.
- ⑤ VARIES TO 2'-0" NORTH OF STA. 55+44
- ⑥ VARIES TO 16'-0" ON RAMP G.



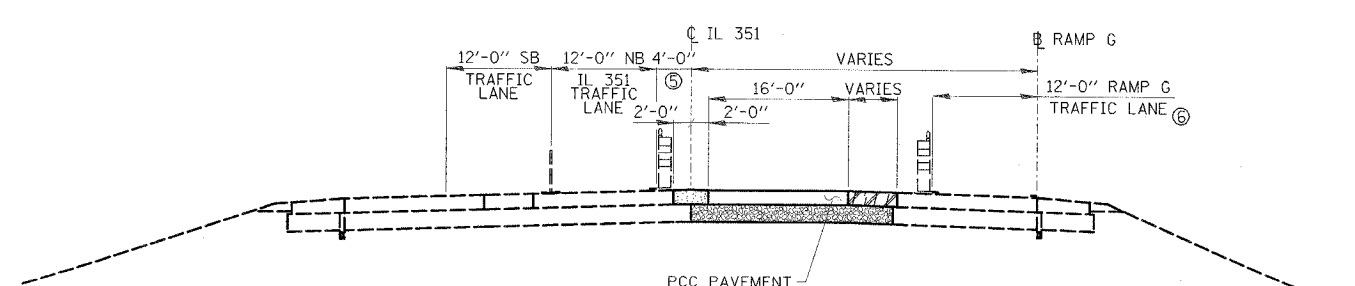
**IL 351
STAGE IVb REMOVAL
STA. 52+90.57 TO STA. 58+36.66**



**IL 351
STAGE Vb REMOVAL
STA. 52+90.57 TO STA. 58+36.66**



**IL 351
STAGE IVb CONSTRUCTION
STA. 52+90.57 TO STA. 58+36.66**



**IL 351
STAGE Vb CONSTRUCTION
STA. 52+90.57 TO STA. 58+36.66**

REVISIONS
NAME

ILLINOIS DEPARTMENT OF TRANSPORTATION
STAGE CONSTRUCTION SECTIONS
 F.A.I. 80 AT ILLINOIS ROUTE 351
 IL 351
 SCALE: NONE
 DATE: 09/04
 DRAWN BY: MES
 CHECKED BY: MTD