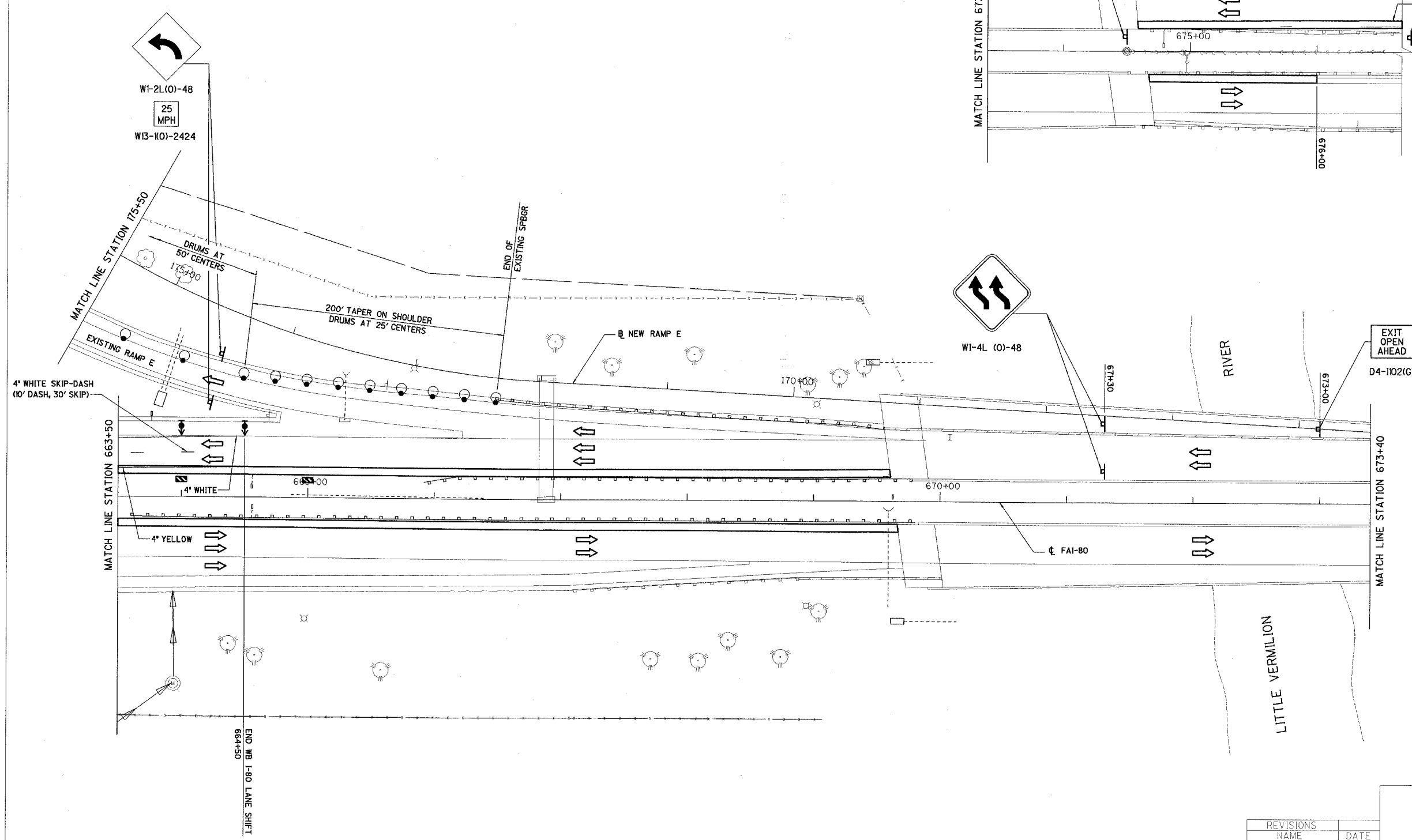
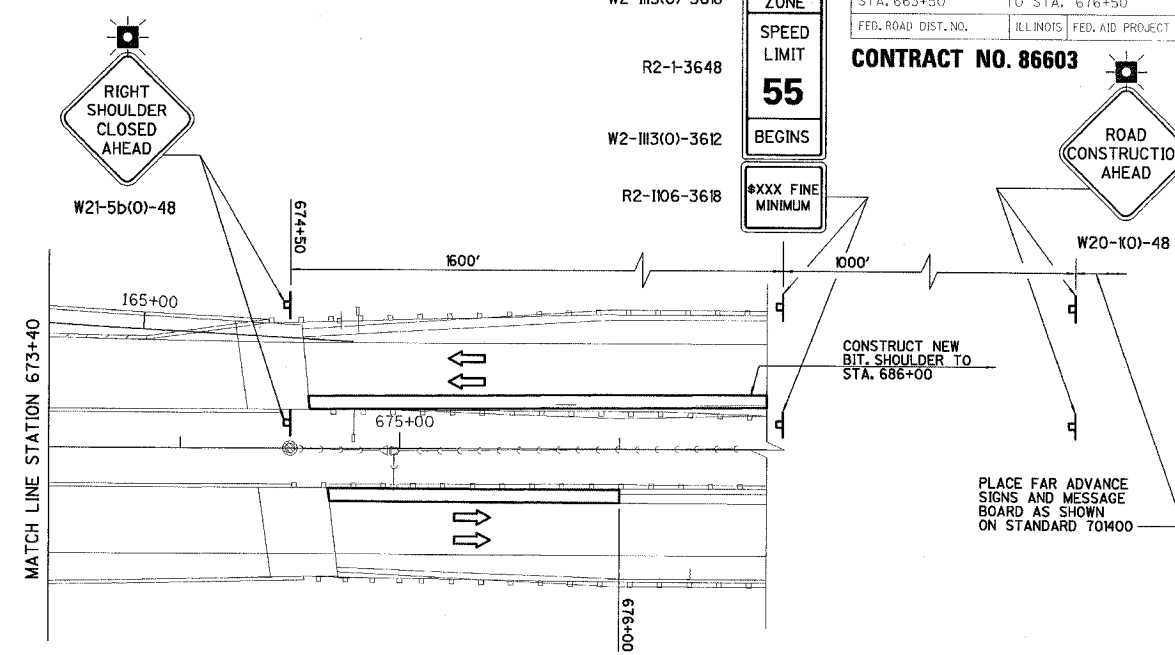


RT.	SECTION	COUNTY	TOTAL SHEETS	SHEET NO.
FAI 80	(50-2)HR	LA SALLE	460	63
STA. 663+50		TO STA. 676+50		
FED. ROAD DIST. NO.		ILLINOIS	FED. AID PROJECT	

CONTRACT NO. 86603

WORK ZONE
SPEED LIMIT
55
BEGINS
+XXX FINE MINIMUM

ROAD CONSTRUCTION AHEAD



REVISIONS	NAME	DATE

ILLINOIS DEPARTMENT OF TRANSPORTATION
STAGE II CONSTRUCTION PLAN
 F.A.I. 80 AT ILLINOIS ROUTE 351
 STATION 663+50 TO STATION 676+50
 DATE: 09/04
 DRAWN BY: MES
 CHECKED BY: MTD

