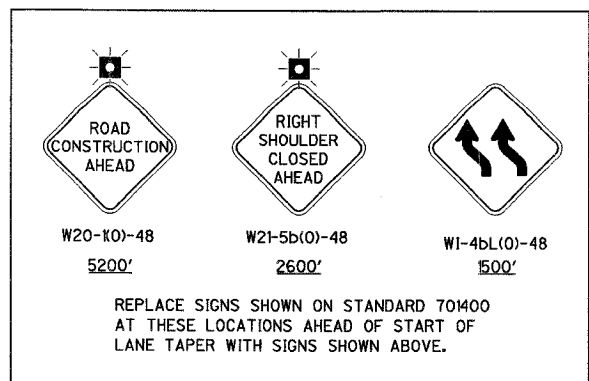
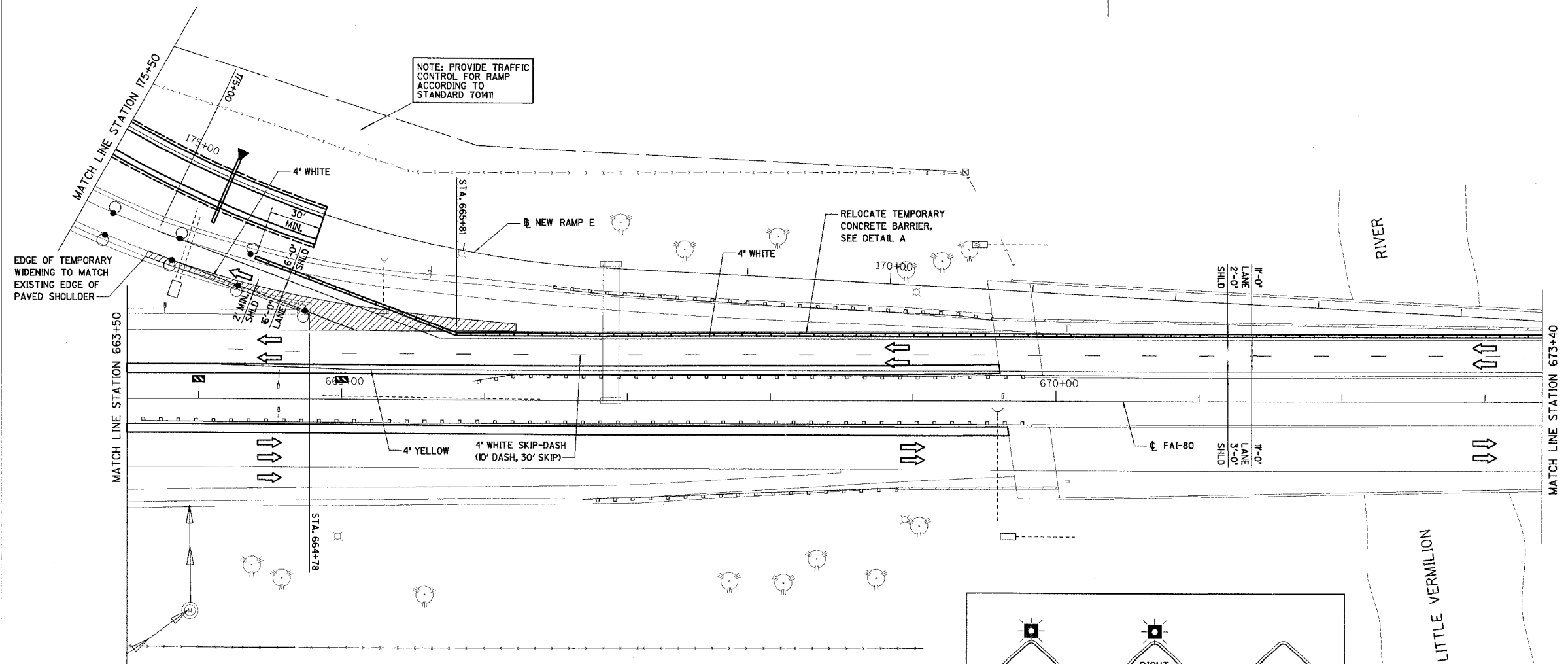
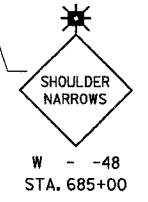
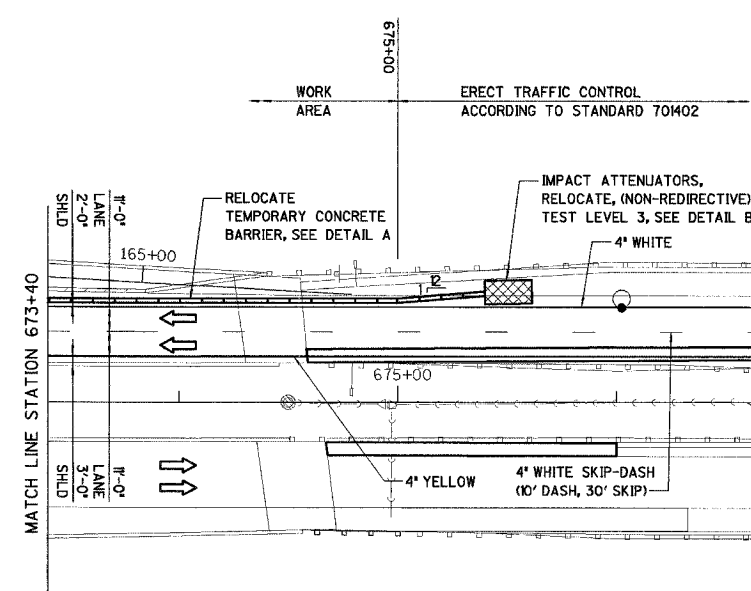
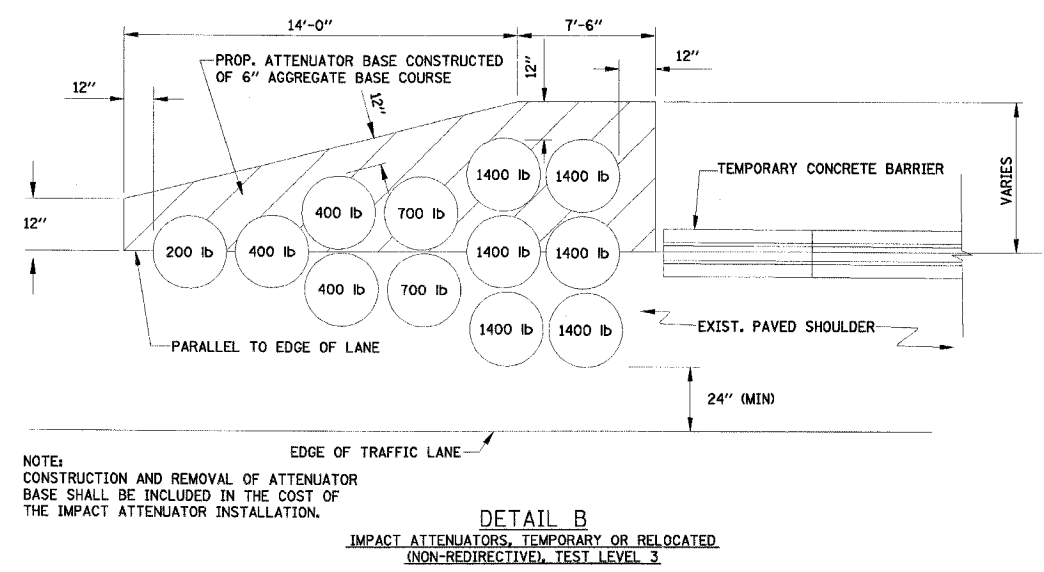
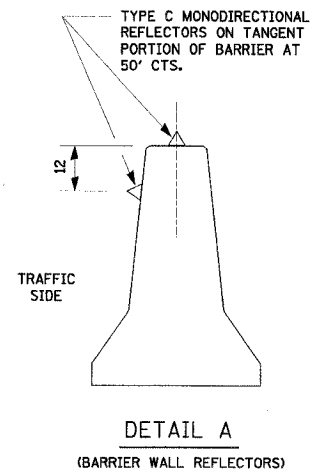


RTE.	SECTION	COUNTY	TOTAL SHEETS	SHEET NO.
FAI 80	(50-2)HBR	LA SALLE	460	66
STA. 663+50		TO STA. 676+50		
FED. ROAD DIST. NO.		ILLINOIS FED. AID PROJECT		

**CONTRACT NO. 86603**



REVISIONS	NAME	DATE

ILLINOIS DEPARTMENT OF TRANSPORTATION

**STAGE IIIa CONSTRUCTION PLAN**

F.A.I. 80 AT ILLINOIS ROUTE 351  
STATION 663+50 TO STATION 676+50

DATE: 09/04  
DRAWN BY: NFS  
CHECKED BY: MTD

SCALE IN FEET